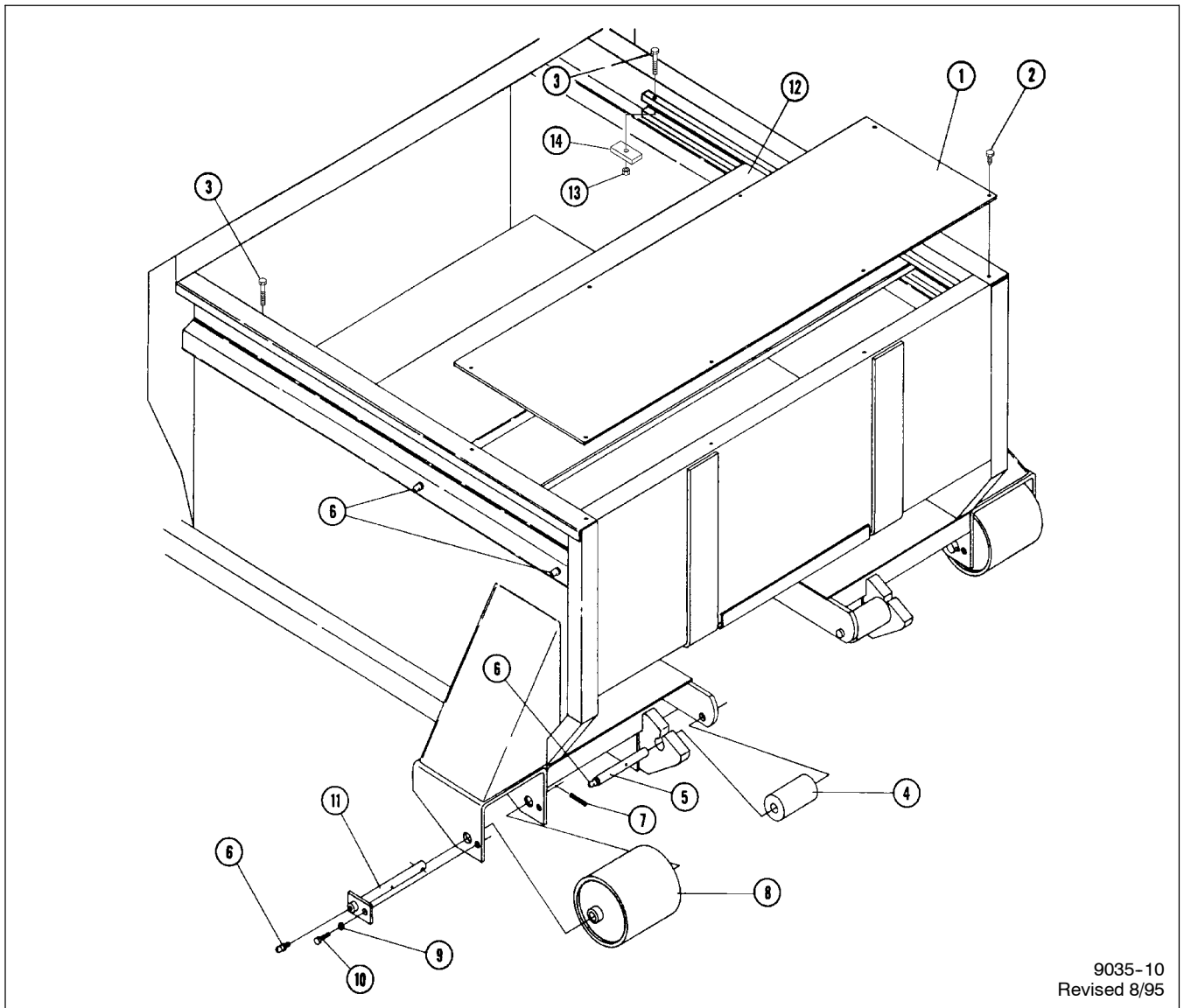


# COVER PLATES & ROLLERS

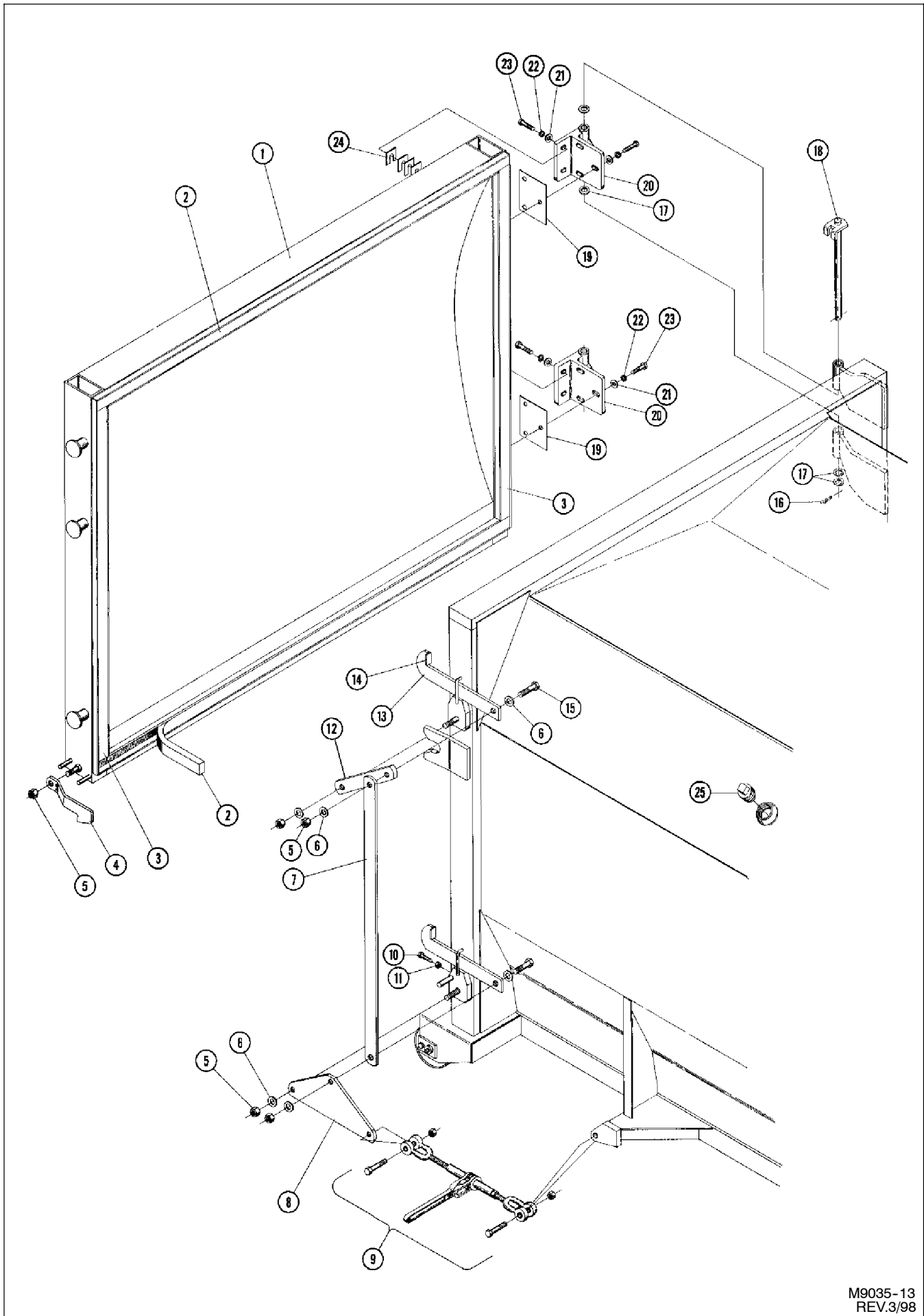


9035-10  
Revised 8/95

## FOR MODELS - ALL

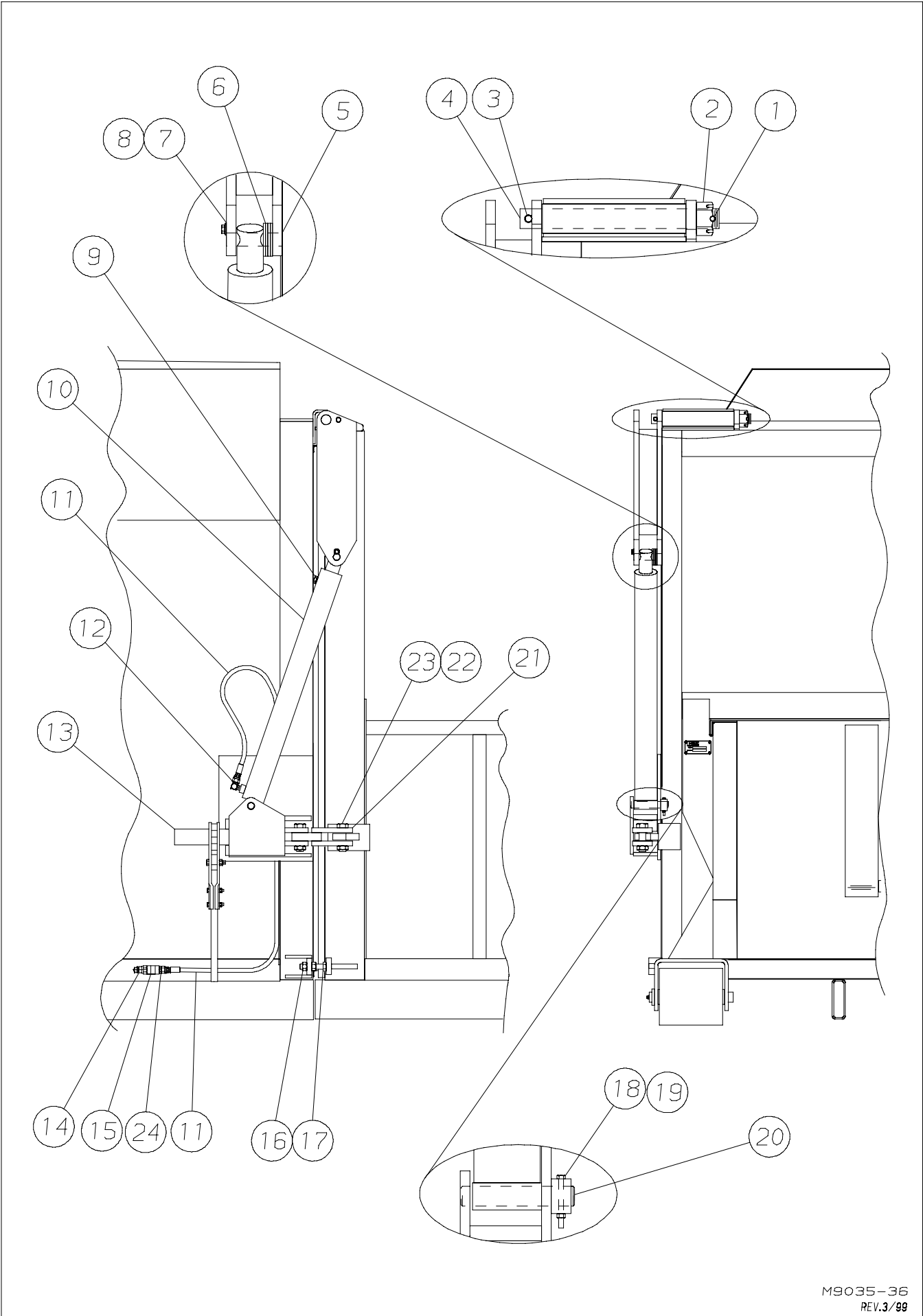
3/98

Item	Part Number	Part Description	Qty.
1	9035-1-10	Top Cover Plate	1
2	62-425	3/8NC x 3/4" Hex Washer Thread Cutting Screw	8
3	62-544	3/8NC x 2" GD. 5 Cap Screw	2
4	82-224	Rail Roller (For Serial #1144 & On)	2
5	82-225	Rail Roller Axle	2
6	65-110	1/8NPT Thread Cutting Zerk	12
7	60-617	3/8" DIA. x 2-1/2" Roll Pin	4
8	9035-9-0	Floor Roller Weldment	4
9	64-107	1/2" STD. Lock Washer	4
10	62-300	1/2NC x 1" Cap Screw	4
11	9035-55-0	Axle Weldment	4
12	9035-27-0	Slide Cover Weldment	1
13	63-103	3/8NC Self Locking Nut	2
14	9120-1-3	Stop	2



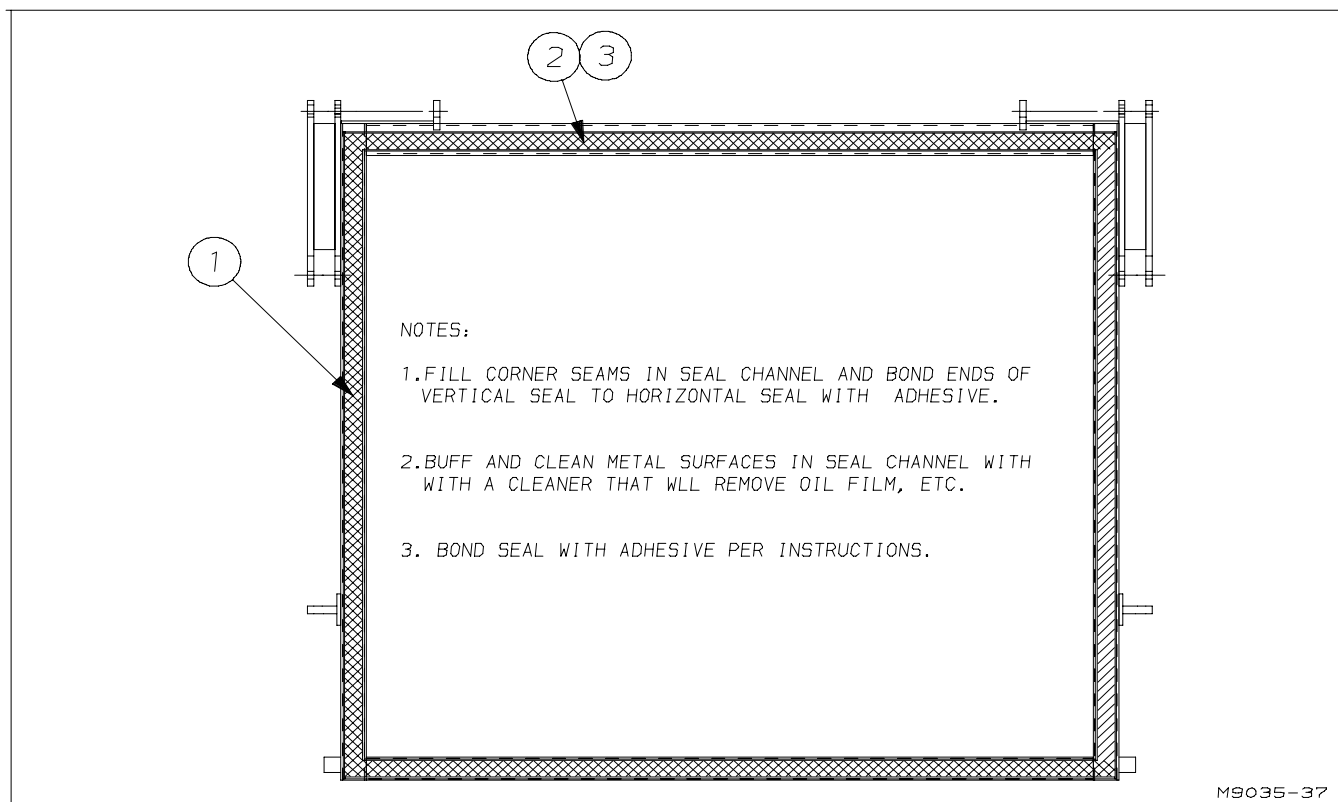
M9035-13  
REV.3/98





M9035-36  
REV.3/99

## HI-TAIL DOOR & SEAL



### FOR MODELS - ALL SIZES HI-TAIL

3/98

Item	Part Number	Part Description	Qty.
1	★ 44-151	Vertical Door Seal	13 ft.
2	★ 44-151	Horizontal Door Seal	15.25ft.
3	99-189	Seal Adhesive	1 Qt.

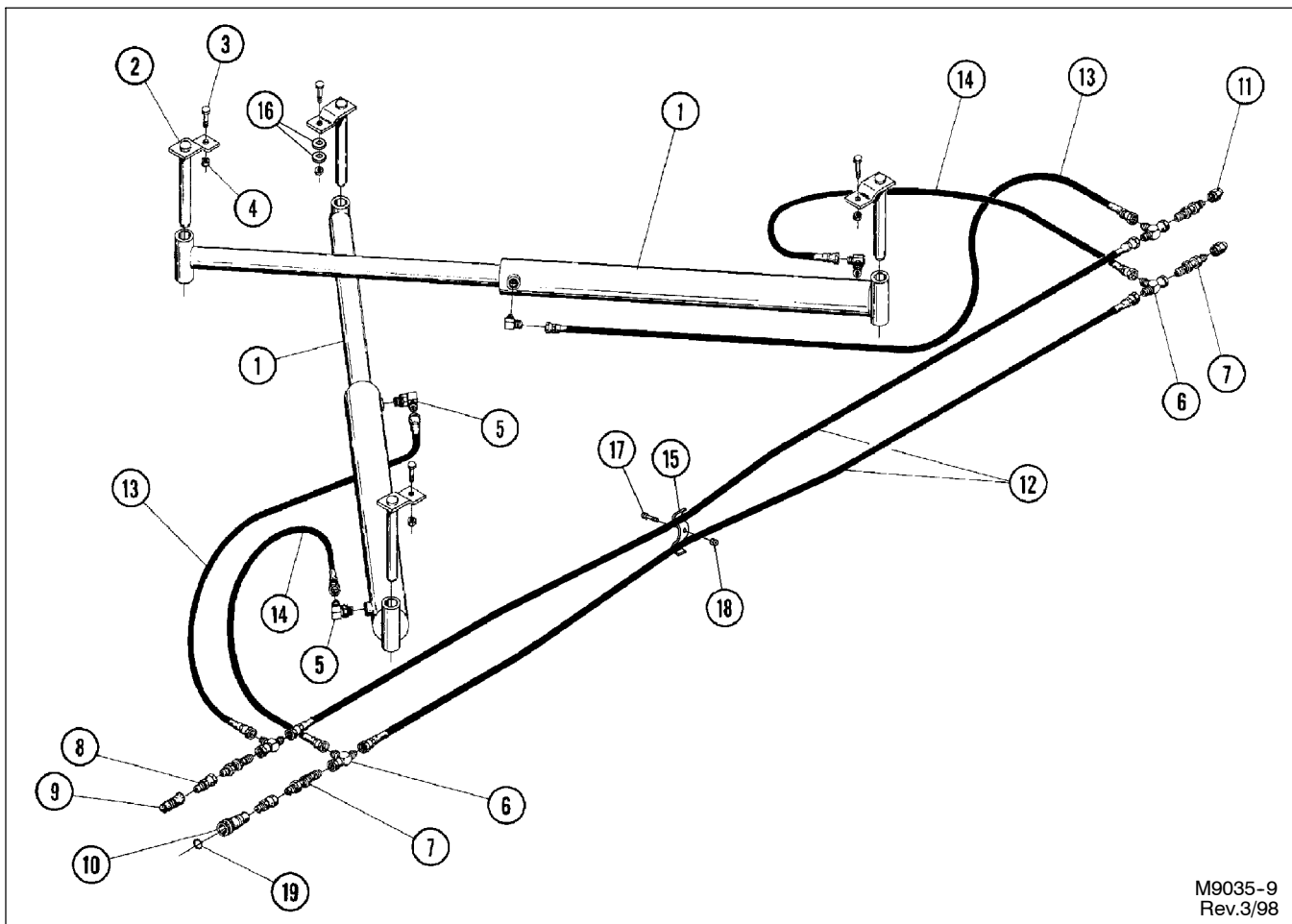
★ NOTE: This is a bulk quantity item. Be sure to specify length required when ordering.

### FOR MODELS - ALL SIZES HI-TAIL

3/99

Item	Part Number	Part Description	Qty.
1	60-617	3/8"DIA. x 2-1/2" Roll Pin	2
2	63-128	1-1/2NC Finished Slotted Hex Nut	2
3	1901-0-2	Hinge Lock Pin	2
4	4901-0-1	Hinge Pin	2
5	9035-301-4	Cylinder Pin	2
6	64-119	1" STD. Flat Washer	8
7	62-425	3/8NC x 3/4" GD5 Hex Washer Thread Cutting Screw	2
8	64-104	3/8" STD. Flat Washer	2
9	25-2454	3/8NPT (M) Breather Vent Hydraulic Fitting	2
10	21-198	3" x 32" Standard Cylinders	2
11	24-310R	2W 1/2" x 74" JIC Black Hose Assembly	2
12	4956-75-0	1/2 x 90° Elbow Restrictor Hydraulic Fitting w/ Tag	2
13	70-211	Turnbuckle	2
14	25-2292	1/2NPT Male Coupler (Ind)	1
15	25-459	1/2NPT (F) Street Tee Hydraulic Fitting	1
16	63-112	3/4NC Hex Nut	4
17	62-702	3/4NC x 4" Full Thread Bolt	2
18	62-385	1/4NC x 2-1/2" GD5 Cap Screw	2
19	63-101	1/4NC Lock Nut	2
20	9035-301-3	Cylinder Pin	2
21	9035-330-0	Clevis Weldment	2
22	62-677	1NC x 3-3/4" GD5 Cap Screw	2
23	63-119	1NC Lock Nut	2
24	25-313	1/2NPT(M) to 3/4JIC(M) Hydraulic Fitting	1

# HYDRAULIC HOSES & FITTINGS



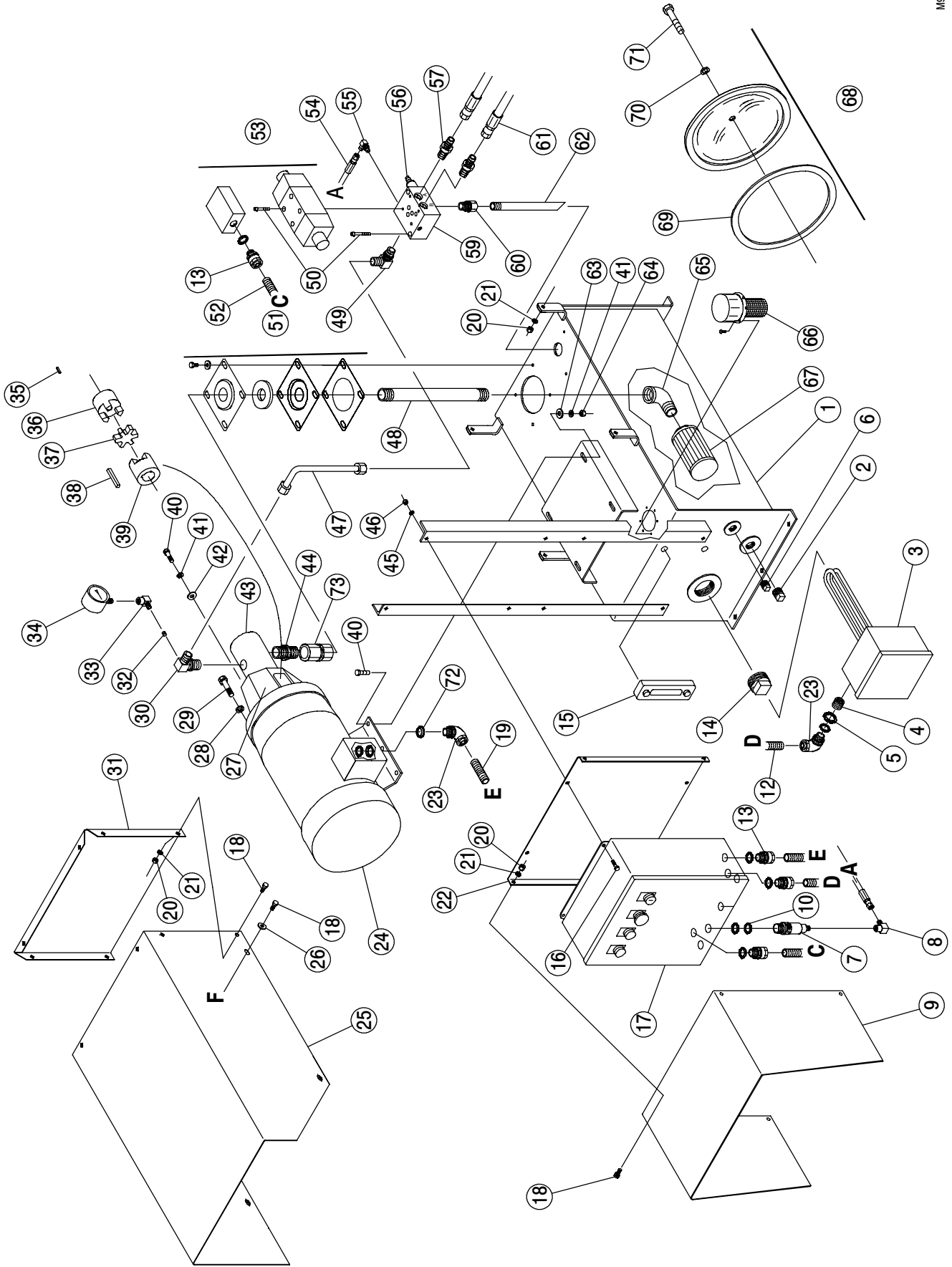
M9035-9  
Rev.3/98

## FOR MODELS - ALL

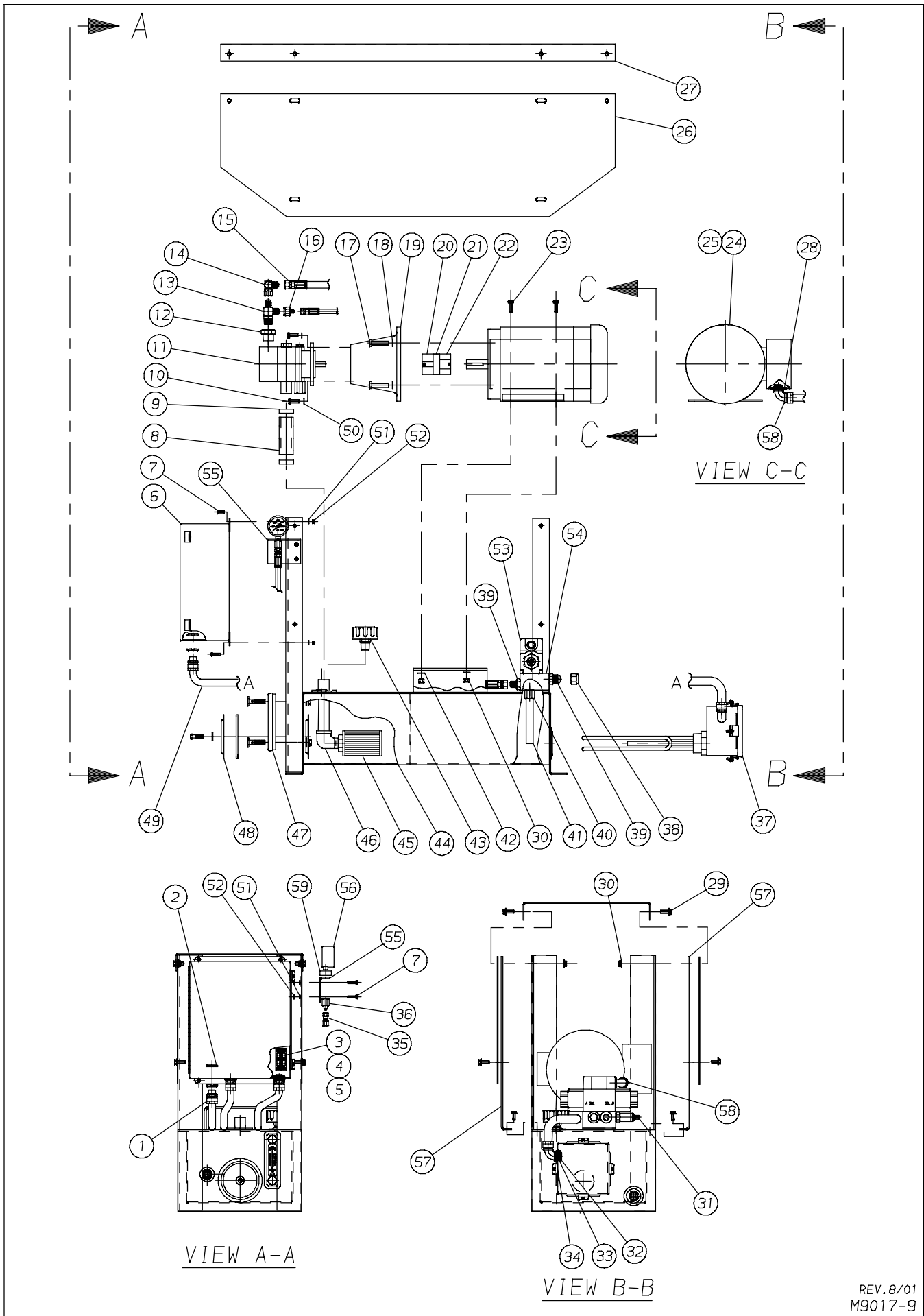
6/07

Item	Part Number	Part Description	Qty.
1	21-156	4" x 37" By-Pass Hydraulic Cylinder (Prince)	2
	23-106	4" x 37" By-Pass Hydraulic Cylinder (Energy)	2
2	9035-28-0	Cylinder Pin Weldment	4
3	62-414	1/2NC x 1-3/4" GD5 Cap Screw	4
4	63-107	1/2NC Self Locking Nut	4
5	25-301	O-Ring 37° Flare 90° Ell	4
6	25-307	37° Male / Female Tee	4
7	25-365	3/4" Bulkhead Union with Lock Nut	4
8	25-366	3/4" JIC to 1/2NPT Pipe Adapter	2
9	25-2292	1/2NPT Male Coupler	1
10	25-2464	1/2NPT Female Coupler Dry Break	1
11	25-364	3/4" Cap Nut	2
12	24-3026	Black 2W 1/2" x 68" JIC Hose	2
13	24-376	1/2" x 48" JIC Hose	2
14	24-3036	1/2" x 30" JIC Hose	2
15	9274-120-2	3/4" I.D. Hose Clamp	1
16	64-108	1/2" STD. Flat Washer	2
17	62-111	3/8NC x 1-1/2" GD5 Cap Screw	1
18	63-134	3/8NC Nylon-Top Lock Nut	1
19	25-2294	O-Ring (Industrial Aeroquip)	1









REV. 8/01  
M9017-9

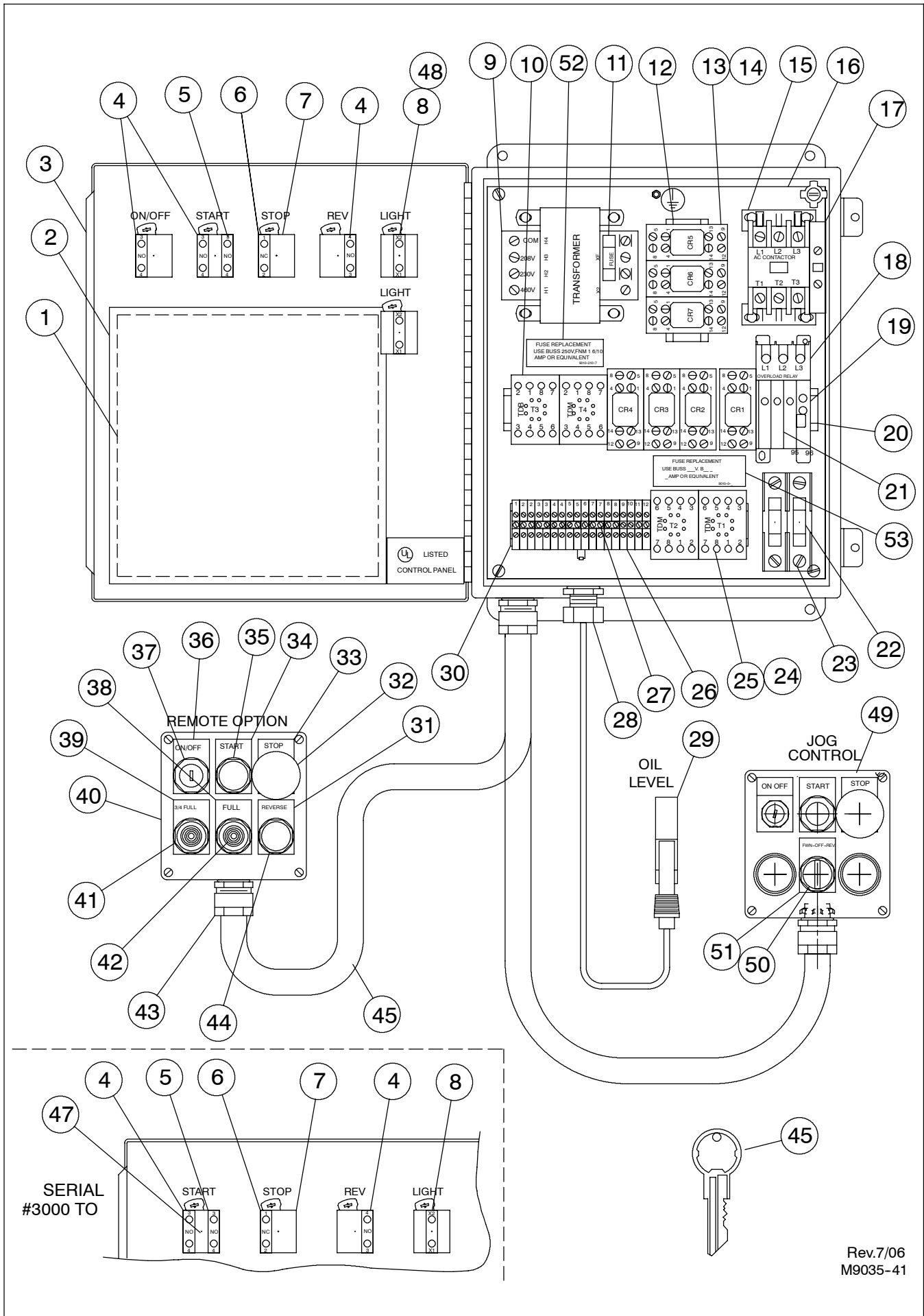
# 5HP POWER PACK ASSEMBLY (BY-PASS)

FOR MODELS - ALL

8/01

Item	Part Number	Part Description	Qty.
1	79-283	1/2NPT Liquitite Straight Adapter Fitting	3
2	79-218	1/2NPS Lock Nut	3
3	79-290	Fuse, 8 Amp	2
4	79-289	Fuse Holder, 2-Pole	1
5	62-494	#8NC x 1/2" Phillips Head Tapping Screw	2
6	see pages P14-15	Control Box Assembly	1
7	62-417	1/4NC x 1" GD5 Cap Screw	4
8	9005-0-8	Suction Hose	1
9	25-487	Hose Clamp, T-Bolt type	2
10	62-108	3/8NC x 1" GD5 Cap Screw	2
11	25-2492	Hydraulic Pump, Hi-Low 11 Gallon	1
12	25-1184	1NPT to 3/4NPT Hex Reducer	1
13	25-619	3/4(M) O-Ring to 3/4(M) NPT Run Tee Hydraulic Fitting	1
14	25-310	3/4(M) JIC to 3/4(F) 90° Hydraulic Fitting	1
15	24-393R	1/2" x 36" (JIC) Black 2W Hose Assembly	1
16	25-617	7/16(M) JIC to 3/4(F) JIC Hydraulic Fitting	1
17	62-343	1/2NC x 2" GD5 Cap Screw	4
18	64-107	1/2" STD. Lock Washer	4
19	9010-4-1	Motor / Pump Adapter Casting	1
20	82-305	Pump Coupler, 5/8" Bore	1
21	82-149	Spider	1
22	82-302	Motor Coupler, 1-1/8" Bore	1
23	62-436	3/8NC x 1-1/4" GD5 Cap Screw	4
24	79-515	Electric Motor, 5 HP 1 Phase	1
25	79-514	Electric Motor, 5 HP 3 Phase	1
26	9005-0-14	Side Cover	2
27	9005-0-13	Top Cover	1
28	79-229	Washer, 3/4" to 1/2"	2
29	62-425	3/8NC x 3/4" GD8 Hex Washer Thread Forming Screw	12
30	63-134	3/8NC Nylon- Top Lock Nut	8
31	25-2218	Relief Valve Cartridge	1
32	79-286	3/4NPS Electrical Lock Nut	1
33	79-287	1/2" to 3/4" Conduit Reducer	1
34	79-285	3/4NPS Sealing Electrical Lock Nut	1
35	24-501R	Black 2W 1/4" x 42" Hose Assembly	1
36	25-618	1/4(F) NPT to 7/16(M) Hydraulic Fitting	1
37	79-282	Oil Heater	1
38	25-364	3/4NF Cap Nut	2
39	25-379	7/8(M) O-Ring to 3/4(M) JIC Hydraulic Fitting	3
40	25-196	1/2(F) NPT to 7/8(M) O-Ring Hydraulic Fitting	1
41	75-218	Return Tube	1
42	64-165	3/8" SAE Flat Washer	4
43	25-2472	3/4 NPT Tank Breather w/ RV	1
44	9005-2-0	15 Gallon Tank Weldment	1
45	25-2106	Stainer	1
46	75-173	1NPT x 90° Black Street Elbow	1
47	25-235	Sight Gauge w/ Temp - 5"	1
48	25-2490	6" Clean-Out Cover	1
49	● 79-196	1/2" Liquitite Flex Metal	10 Ft.
50	64-103	3/8" STD. Lock Washer	2
51	64-100	1/4" STD. Lock Washer	4
52	63-100	1/4NC Hex Nut	4
53	25-2220	Solenoid Valve Assembly	1
54	25-2209	Valve Sub-Plate	1
55	9010-199-2	Pressure Gage Bracket	1
56	25-2119	Hydraulic Pressure Gage	2
57	9005-0-15	Cover Support Bracket	2
58	79-223	1/2 x 90° Liquitite Adapter Fitting	3
59	44-108	Rubber Grommet	1

● This a bulk quantity item and you must specify the length required when ordering.



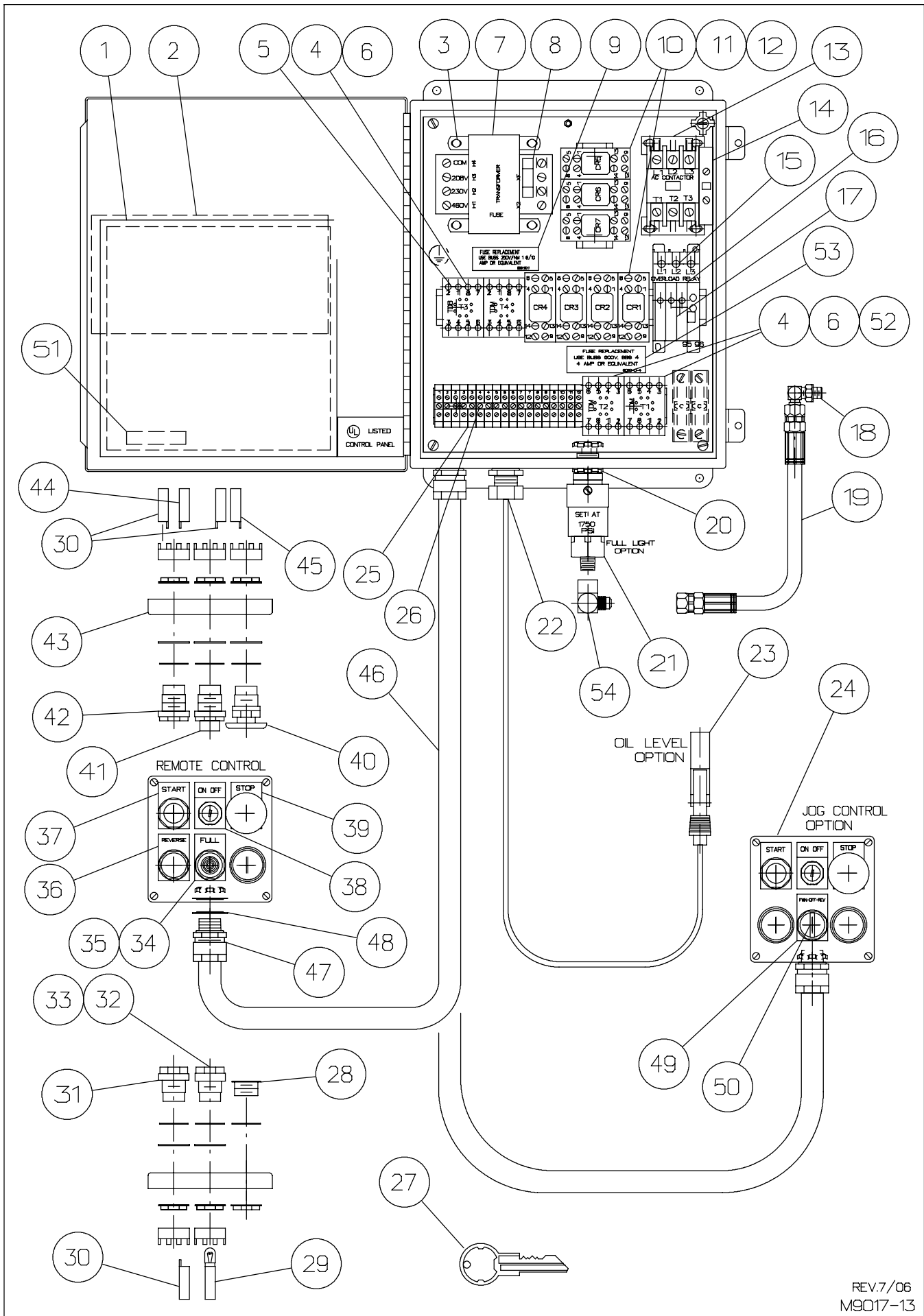
Rev.7/06  
M9035-41

# 10 HP POWER PANEL - BY-PASS (Serial #3000 & ON)

Rev.10/07

Item	Part Number	Part Description	Qty.
1		Electrical Schematic - Specify Voltage & Options	1
2	9010-210-8	Plastic Seal	1
3	79-198	Control Box UL 14" x 12" x 6"	1
4	79-352	N.O. Contact Block	3
5	79-354	N.O. Early Close Contact Block	1
6	79-353	N.C. Contact Block	1
7	79-445	Mounting Adapter	Spec.
8	79-348	Pilot Light - 120V Unit	1
9	79-304	Transformer 150V Tri-Volt	1
10	79-340	Timer 8 Pin (Delay on Break)	1
11	79-309	Fuse 1-6/10 Amp FNM	1
12	9010-210-9	Din Rail, Relays	1
13	79-357	Relay	Spec.
14	79-358	Relay Socket	Spec.
15	79-339	A.C. Contactor - 10HP 3 Phase	1
	79-439	A.C. Contactor - 10HP 1 Phase	1
16	9010-210-2	Back Panel	1
17	79-338	Auxiliary Contact	1
18	79-337	Din Rail and Panel Adapter - 10HP 3 Phase	1
	79-417	Din Rail and Panel Adapter - 10HP 1 Phase	1
19	79-334	Overload Relay - 10HP 3 Phase	1
	79-422	Overload Relay - 10HP 1 Phase	1
20	9010-210-3	Din Rail - Relay, O.L.	1
21	79-336	Heater Pack (23.5 - 32 Amp) 208V, 230V 3 Phase	3/Pkg
	79-335	Heater Pack (14.0 - 21.7 Amp) 460V 3 Phase	3/Pkg
	79-423	Heater Pack (39.6 - 57.4 Amp) 220V 1 Phase	3/Pkg
22	79-290	Fuse - 8 Amp 208V, 230V 3 Phase / 220V 1 Phase	2
	79-291	Fuse - 4 Amp 460V 3 Phase	2
23	79-289	Fuse Base	1
24	79-501	8 Pin Timer Base	Spec.
25	79-481	Timer 8-Pin Delay on Make	Spec.
26	79-344	1 Pole Terminal Block	Spec.
27	79-359	Link Rail - 2 Terminal	Spec.
28	79-443	Straight Cord Connector	1
29	79-438	Oil Level Switch	1
30	9010-210-4	Din Rail - Terminal Block	1
31	79-325	Legend Plate - Reverse	1
32	79-346	Mushroom Operator - Stop	1
33	79-322	Legend Plate - Stop	1
34	79-320	Legend Plate - Start	1
35	79-512	Green Operator (START)	1
36	79-426	Legend Plate - ON/OFF	1
37	79-425	Keyed 2-Position Switch (Maintained)	1
38	9010-211-2	Legend Plate - Full	1
39	9010-211-3	Legend Plate - 3/4 Full	1
40	79-449	Push Button Enclosure (6 Hole)	1
41	79-349	Pilot Light (Amber) Lens	1
42	79-350	Pilot Light (Red) Lens	1
43	79-283	Adapter Straight Liquitite	2
44	79-347	Black Operator (Reverse)	1
45	■ 79-196	Hose 1/2" Liquitite Flex Metal - 15 Ft.	1
46	79-387	Switch Key	1
47	79-345	Keyed 2-Position Switch (START)	1
48	79-409	Replacement Bulb (60V-1.2V)	1
49	9011-89-0	Jog Control	1
50	79-468	Black Selector Switch	1
51	79-470	Legend Plate, FWD-OFF-REV	1
52	9010-210-7	Fuse Replacement Decal - 1 6/10 Amp	1
53	9010-0-4	Fuse Replacement Decal - 4 Amp	1
	9010-0-8	Fuse Replacement Decal - 8 Amp	1

■ This is a bulk quantity item. You must specify length required when ordering.



REV.7/06  
M9017-13

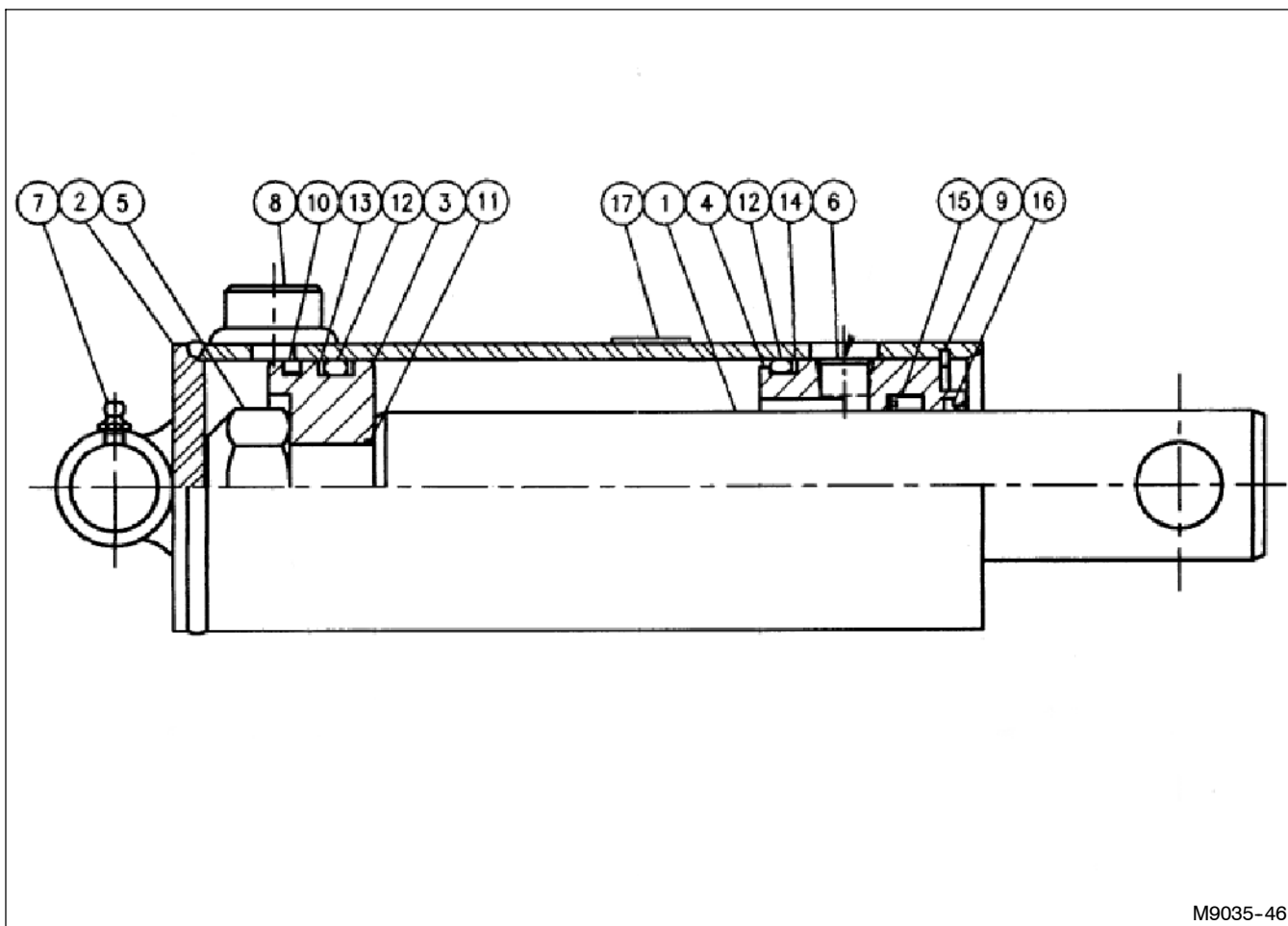
## 5HP 1 PHASE POWER PANEL - BY-PASS

FOR MODELS -

8/06

Item	Part Number	Part Description	Qty.
1	9010-210-8	Clear Cover	1
2	74-265	Decal - DANGER High Voltage	1
3	62-494	#8NC x 1/2" Phillips Head Tapping Screw	14
4	79-501	Timer Base	Spec.
5	79-340	Timer 8 Pin (Delay on Break)	Spec.
6	79-500	Timer Clip	Spec.
7	79-304	Transformer 150 VA Tri-Volt	1
8	79-309	Fuse 1-6/10 AMP FNM	1
9	9010-210-7	Decal - Fuse Replacement	1
10	79-357	Relay	Spec.
11	79-358	Relay Socket	Spec.
12	79-502	Relay Clip	Spec.
13	79-339	Contactactor	1
14	79-338	Auxiliary Contactactor	1
15	79-337	Din-Rail and Panel Adapter	1
16	79-334	Overload Relay	1
17	79-336	Heater Pack (23.5-32 Amp) 220 V	3/pkg
18	25-368	7/16(M) JIC to 7/16(M) O-Ring 90° Hydraulic Fitting	Spec.
19	24-502R	1/4" x 46" Black 2W Hose Assembly	Spec.
20	79-218	1/2NPS Lock Nut	Spec.
21	25-2534	Pressure Switch	1
22	79-443	Straight Cord Adapter	1
23	79-438	Oil Level Switch	1
24	9011-89-0	Jog Control (OPTION)	1
25	79-344	1 Pole Terminal Block (size 4)	Spec.
26	79-359	Link Rail - 2 - Terminal	4
27	79-387	Key	1
28	79-427	1/2" Hole Plug	2
29	79-348	Pilot Light 120V Unit	Spec.
30	79-352	N.O. Contact Block	3
31	79-347	Black Operator - REVERSE	1
32	79-349	Amber Lens - Pilot Light (80% Full)	1
33	79-350	Red Lens - Pilot Light (100% Full)	1
34	9010-211-2	Legend Plate - FULL	1
35	9010-211-3	Legend Plate - 3/4 FULL	1
36	79-325	Legend Plate - REVERSE	1
37	79-320	Legend Plate - START	1
38	79-426	Legend Plate - ON/OFF	1
39	79-322	Legend Plate - STOP	1
40	79-482	Mushroom Operator - STOP	1
41	79-425	Keyed 2 Position Switch (Maintenance)	1
42	79-512	Green Operator - START	1
43	79-449	Pushbutton Enclosure - 6 Hole	1
44	79-354	N.O. Early Close Contact Block	1
45	79-353	N.C. Contact Block	1
46	■ 79-196	1/2" Waterproof Conduit	180"
47	79-283	1/2NPT Liquitite Straight Adapter	2
48	79-229	3/4" to 1/2" Washer	2
49	79-470	Legend Plate - FWD-OFF-REV	1
50	79-468	Black Selector Switch	1
51	see page P32-33	Voltage Decal	Spec.
52	79-481	Timer (Delay on Make)	Spec.
53	9010-0-8	Fuse Replacement Label - 8 Amp	1
54	25-456	7/16JIC(M) - 1/4NPT(F) 90° Hydraulic Fitting	1
■ This is a bulk quantity item. You must specify length required when ordering.			

# PRINCE HYDRAULIC CYLINDER ASSEMBLY



M9035-46

21-198 3" x 32" Prince Cylinder Assembly  
Retracted - 40" Extended - 72"

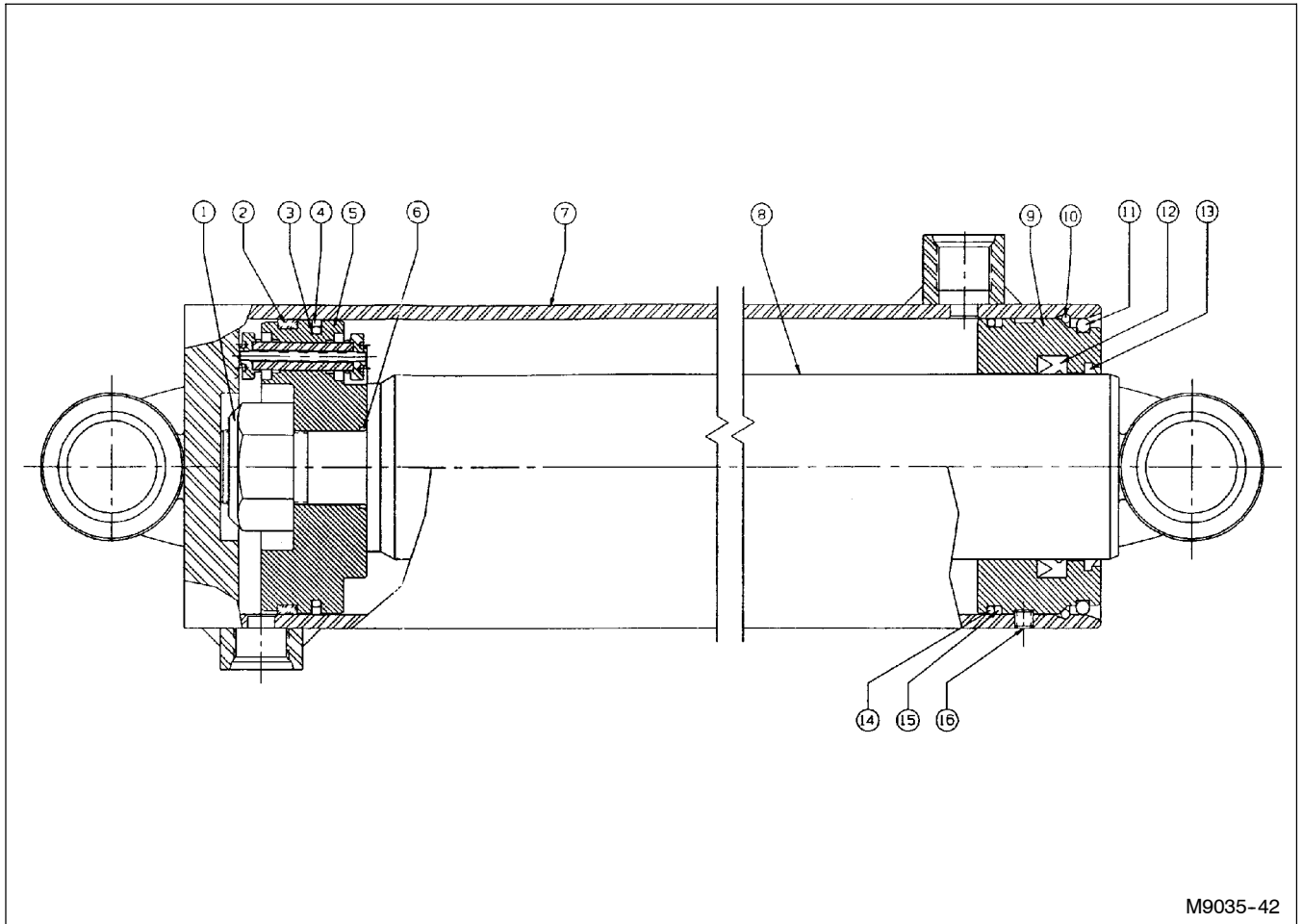
Stroke - 32"

Rod Diameter - 1-3/4"

6/07

Item	Part Number	Part Description	Qty.
1		Piston Rod	1
2		Butt & Tube Assembly	1
3		Piston	1
4		Gland	1
5		Lock Nut	1
6		Port Plug	1
7		Grease Zerk	1
8		Port Plug	1
9	★	Snap Ring Retainer	1
10	★	Piston Ring	1
11	★	O-Ring	1
12	★	O-Ring	2
13	★	Back-Up Washer, Leather	2
14	★	Back-Up Washer	1
15	★	U-Cup	1
16	★	Wiper	1
17		Decal	1
	● 21-2051	Seal Kit (★ Included in Kit)	
	●	Not part of cylinder assembly	

# ENERGY HYDRAULIC CYLINDER ASSEMBLY

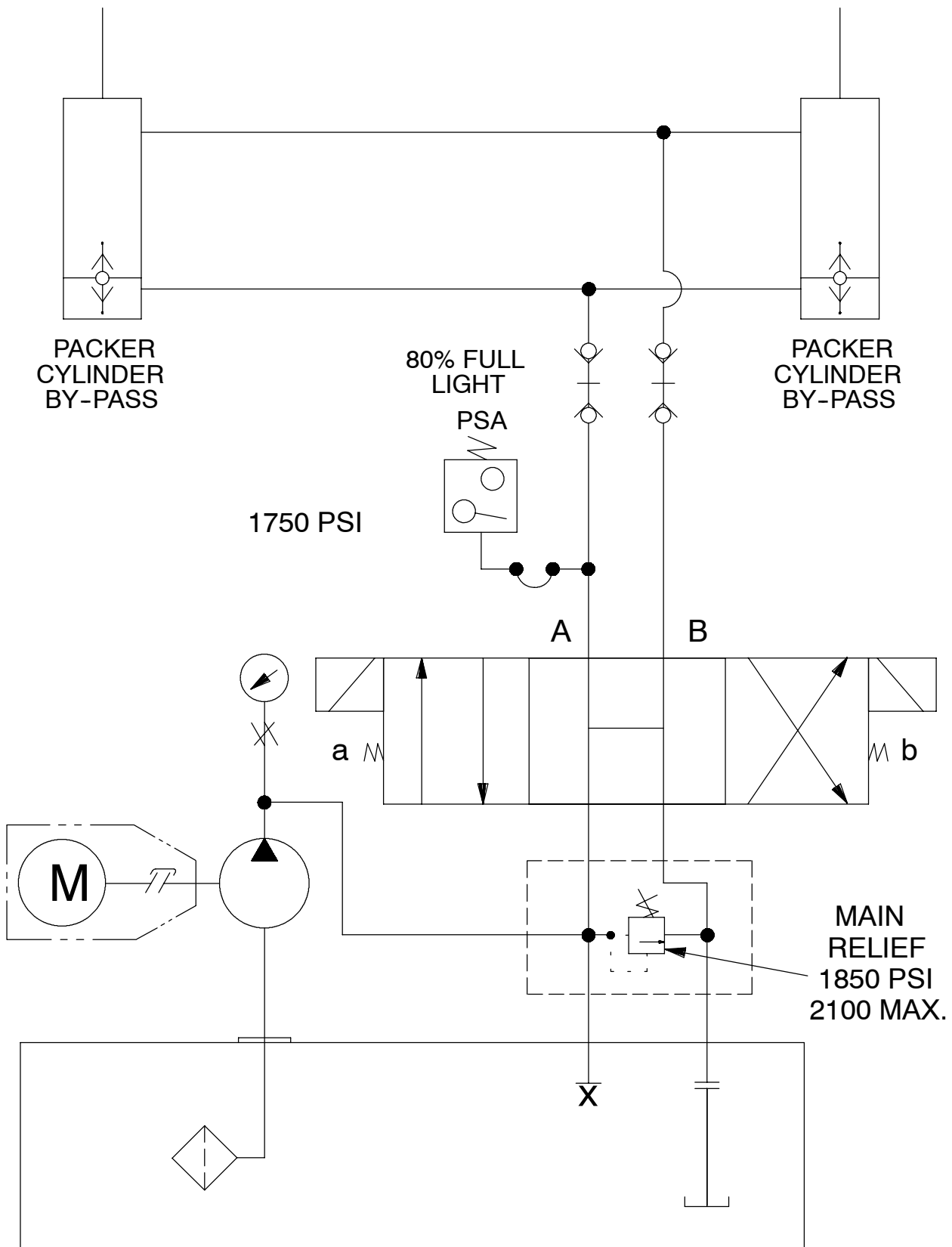


M9035-42

23-106 4" x 37" Energy By-Pass Cylinder Assembly 3/98  
 Retracted - 43-1/2" Extended - 80-1/2" Stroke - 37" Rod Diameter - 2-1/2"

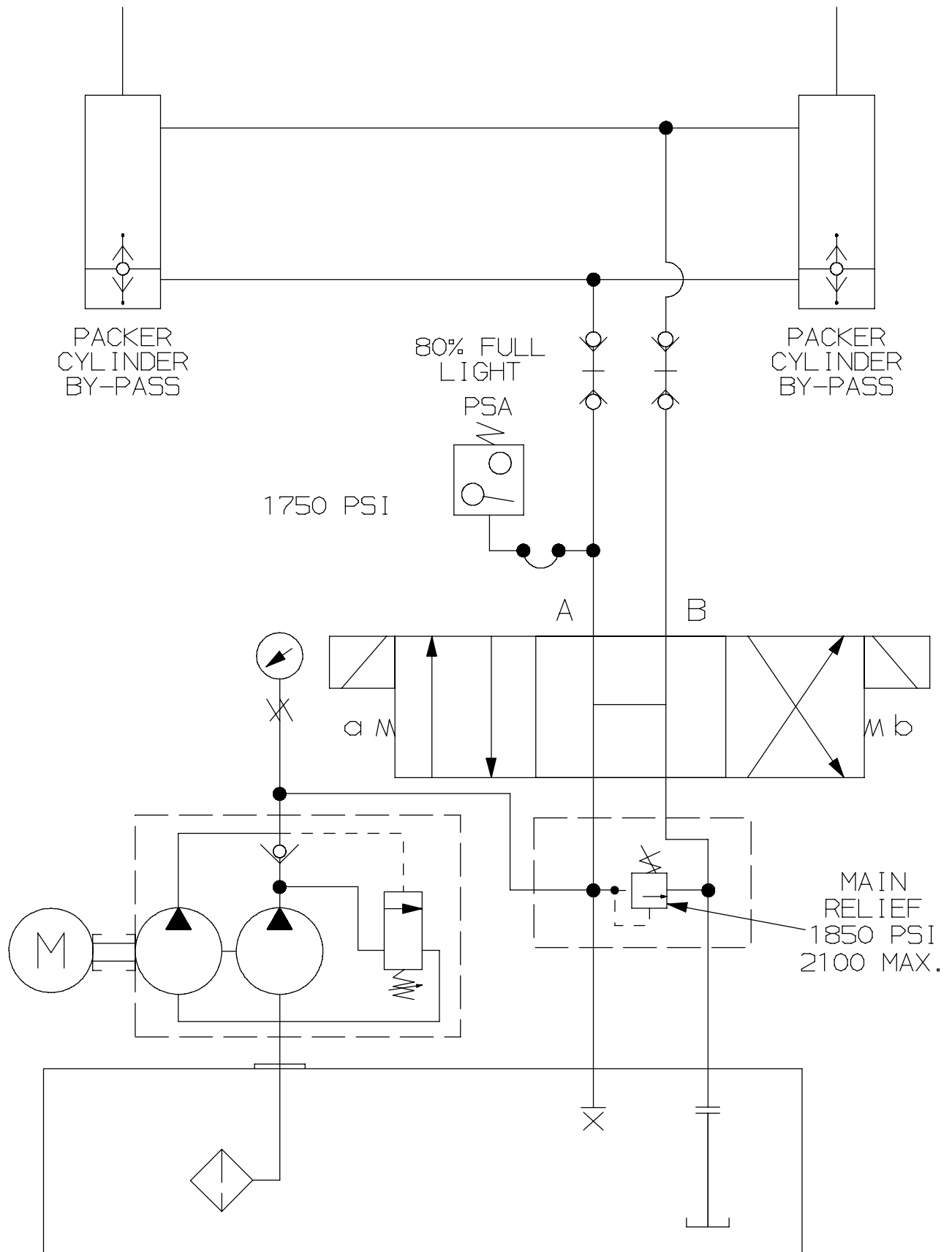
Item	Part Number	Part Description	Qty.
1		Lock Nut	
2	★	Wear Ring	
3	★	O-Ring	
4	★	Piston Ring	
5		Piston	
6	★	O-Ring	
7		Cylinder Body	
8		Rod	
9		Guide	
10		Retaining Ring	
11	★	O-Ring	
12	★	U-Cup	
13	★	Wiper Ring	
14	★	O-Ring	
15	★	Back-Up Ring	
16	★	Set Screw	
	● 23-234	Seal Kit (Includes ★ Items)	
	●	Not part of cylinder assembly	

# HYDRAULIC SCHEMATIC - 10HP BY-PASS



REV.10/05  
M9035-44

# HYDRAULIC SCHEMATIC - 5HP BY-PASS



REV. 10/05  
MB017-17





# K-PAC EQUIPMENT DIVISION

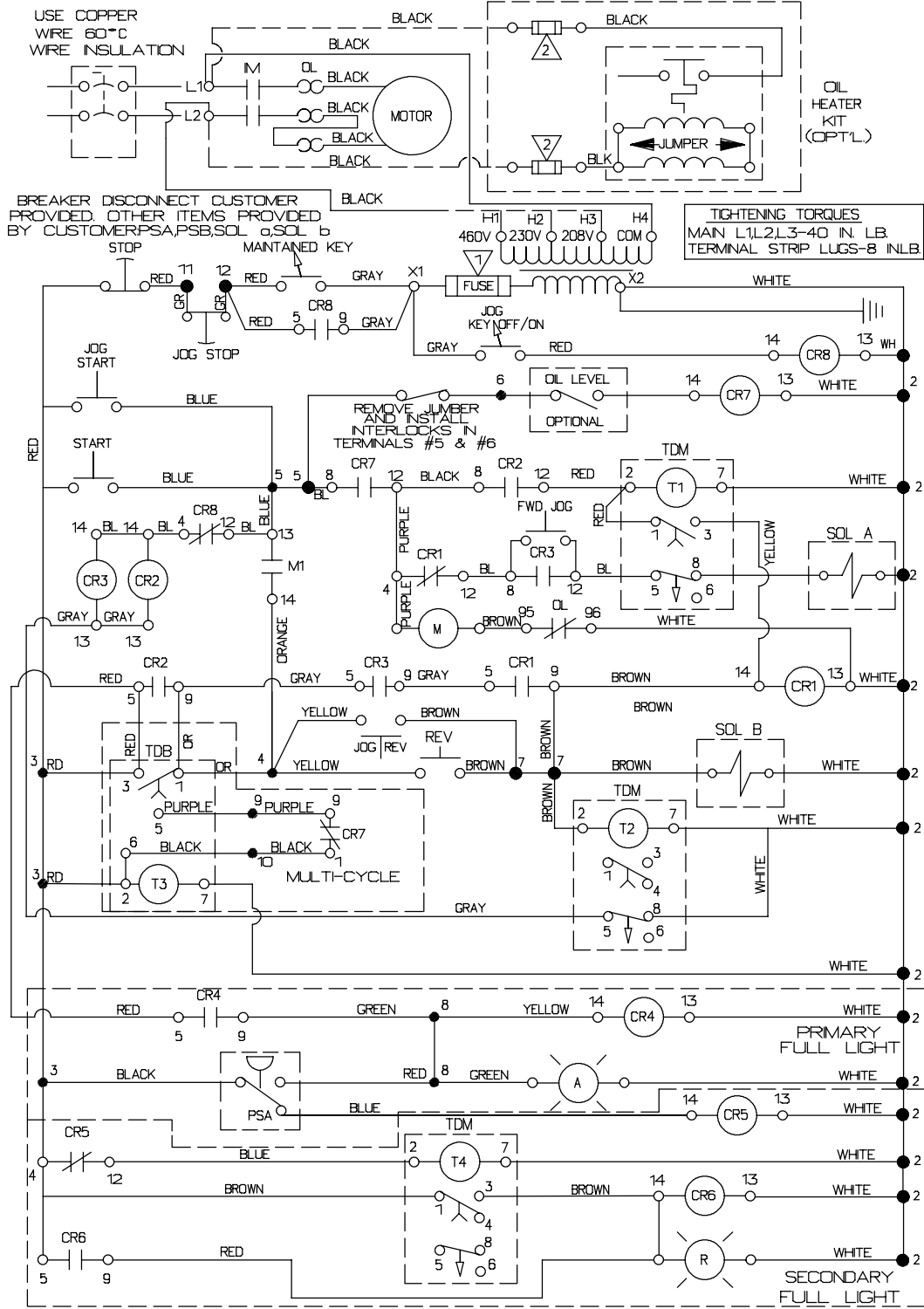
KRAUSE CORPORATION, INC.

**10 HP, 1 PHASE, 60 HZ (BY-PASS)**

220 VOLT, SINGLE PHASE, 50 AMPS, 60 HZ

CONTROL VOLTS 115

## JOG CONTROL ELECTRICAL SCHEMATIC (OIL HEATER, OIL LEVEL OPTIONAL)



NOTE: MOTOR ROTATION MUST BE CLOCKWISE. CONNECT POWER LEADS TO L1, L2  
CHECK ROTATION OF MOTOR. IF COUNTER-CLOCKWISE ROTATION IS OBSERVED,  
REWIRE AS INSTRUCTED ON MOTOR NAME PLATE

REV.D 01/07  
9011-220-0MJLLS  
M9035-48D

# K-PAC EQUIPMENT DIVISION

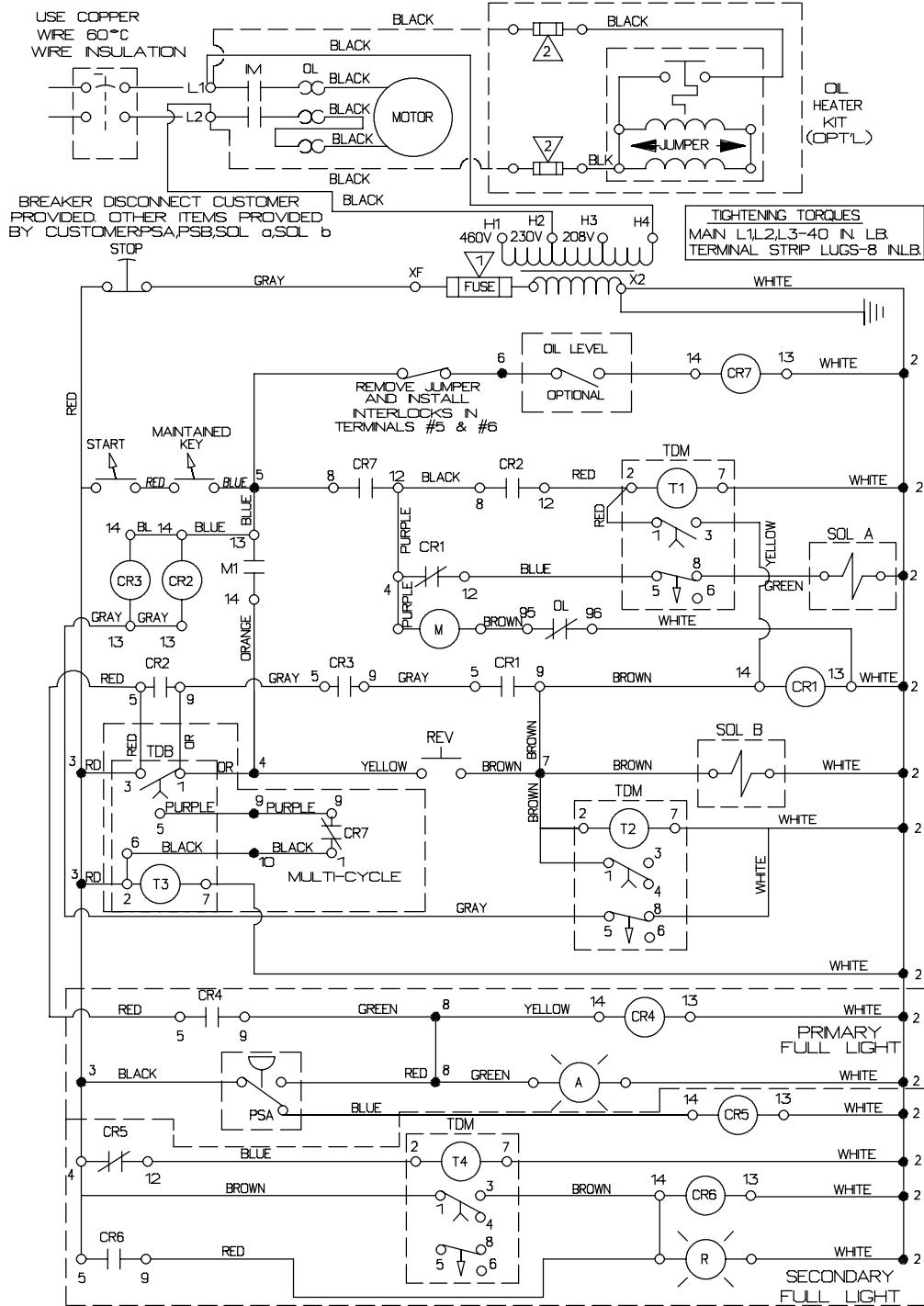
KRAUSE CORPORATION, INC.

**10 HP, 1 PHASE, 60 HZ (BY-PASS)**

220 VOLT, SINGLE PHASE, 50 AMPS, 60 HZ

CONTROL VOLTS 115

## MULTI-CYCLE LIGHT ELECTRICAL SCHEMATIC ( OIL HEATER, OIL LEVEL OPTIONAL)



⚠️ STANDARD: BUSS 250V,FNM 16 OR EQUIVALENT      ⚠️ OIL HEATER: BUSS 600V,BAF 8 AMP

NOTE: MOTOR ROTATION MUST BE CLOCKWISE. CONNECT POWER LEADS TO L1,L2 .  
CHECK ROTATION OF MOTOR. IF COUNTER-CLOCKWISE ROTATION IS OBSERVED,  
REWIRE AS INSTRUCTED ON MOTOR NAME PLATE.

REV.E 06/07  
M9035-40E

# K-PAC EQUIPMENT DIVISION

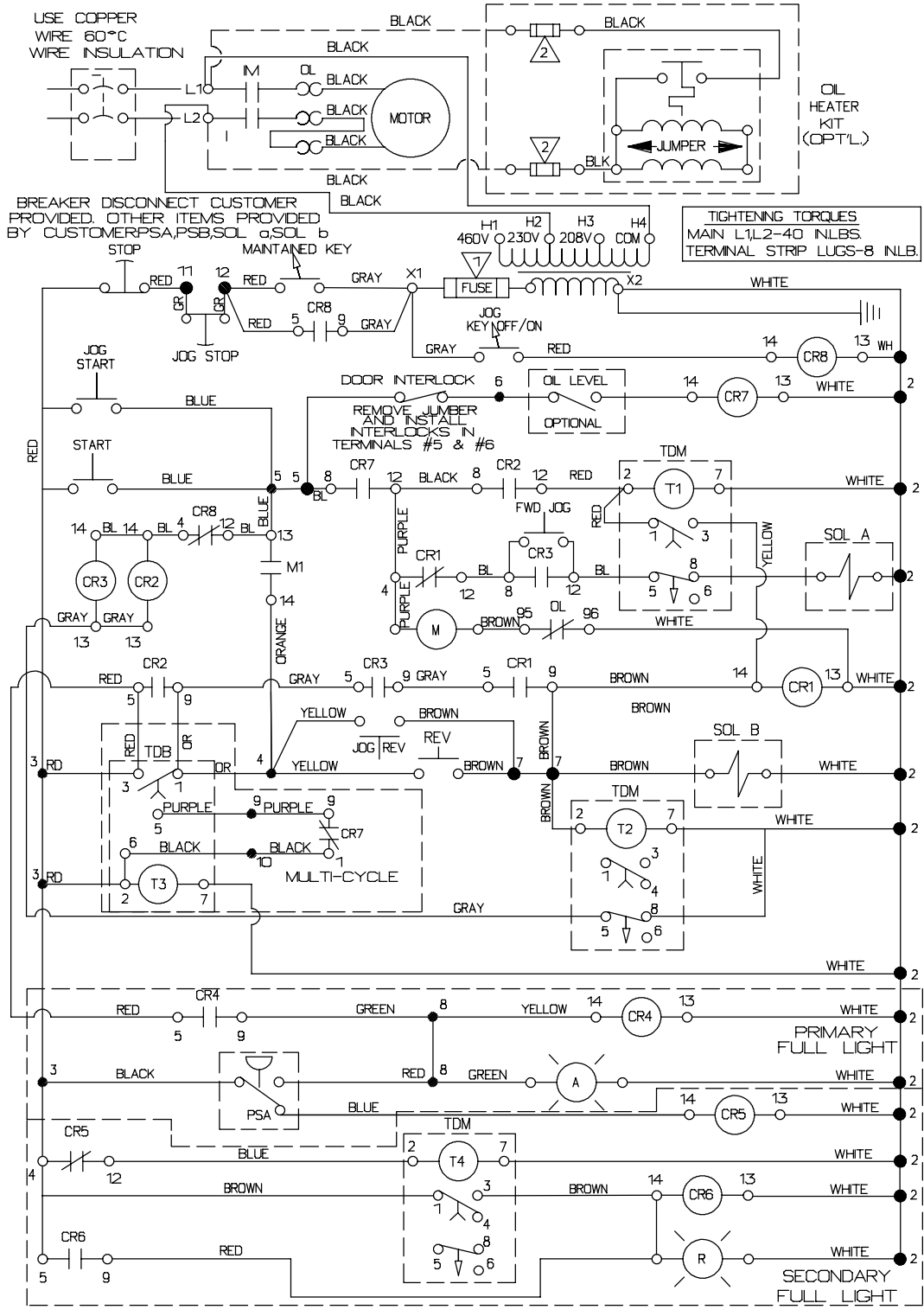
KRAUSE CORPORATION, INC.

## 5HP, SINGLE PHASE, 60 HZ (BY-PASS)

220 VOLT, SINGLE PHASE, 28 AMPS, 60 HZ

CONTROL VOLTS 115

### JOG CONTROL, MULTI-CYCLE LIGHT, LIGHT, ELECTRICAL SCHEMATIC (OIL HEATER, OIL LEVEL OPTIONAL)



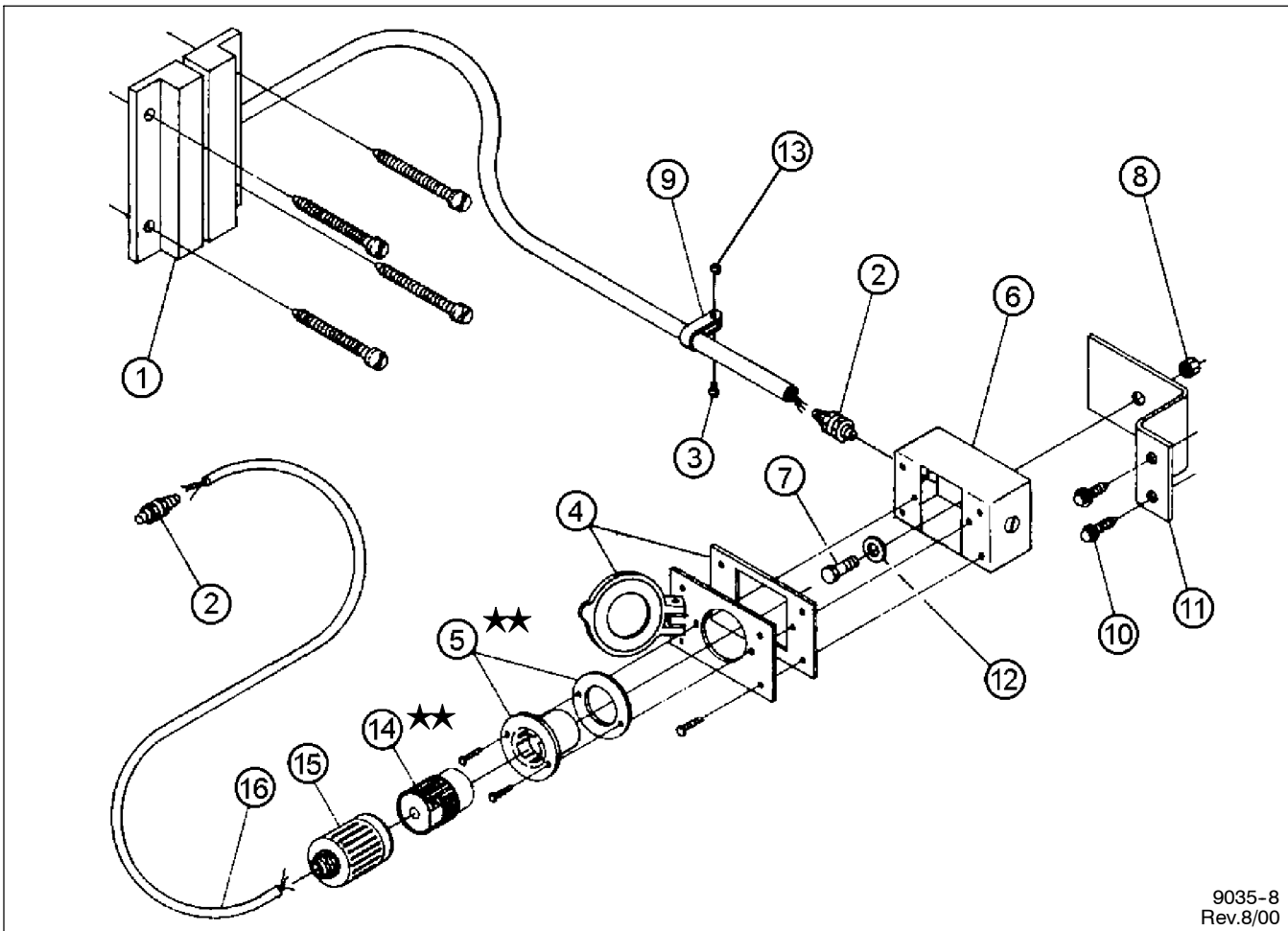
△ 1 STANDARD: BUSS 250V, FNM 16 OR EQUIVALENT      △ 2 OIL HEATER: BUSS 600V, BAF 8 AMP

NOTE: MOTOR ROTATION MUST BE CLOCKWISE. CONNECT POWER LEADS TO L1, L2, CHECK ROTATION OF MOTOR. IF COUNTER-CLOCKWISE ROTATION IS OBSERVED, REWIRE AS INSTRUCTED ON MOTOR NAME PLATE

REVB 6/07  
M9017-16  
9005-220-OMJLLS



# ELECTRIC INTERLOCK ASSEMBLY



9035-8  
Rev.8/00

## FOR MODELS - FRONT DOOR & SIDE DOOR MODELS

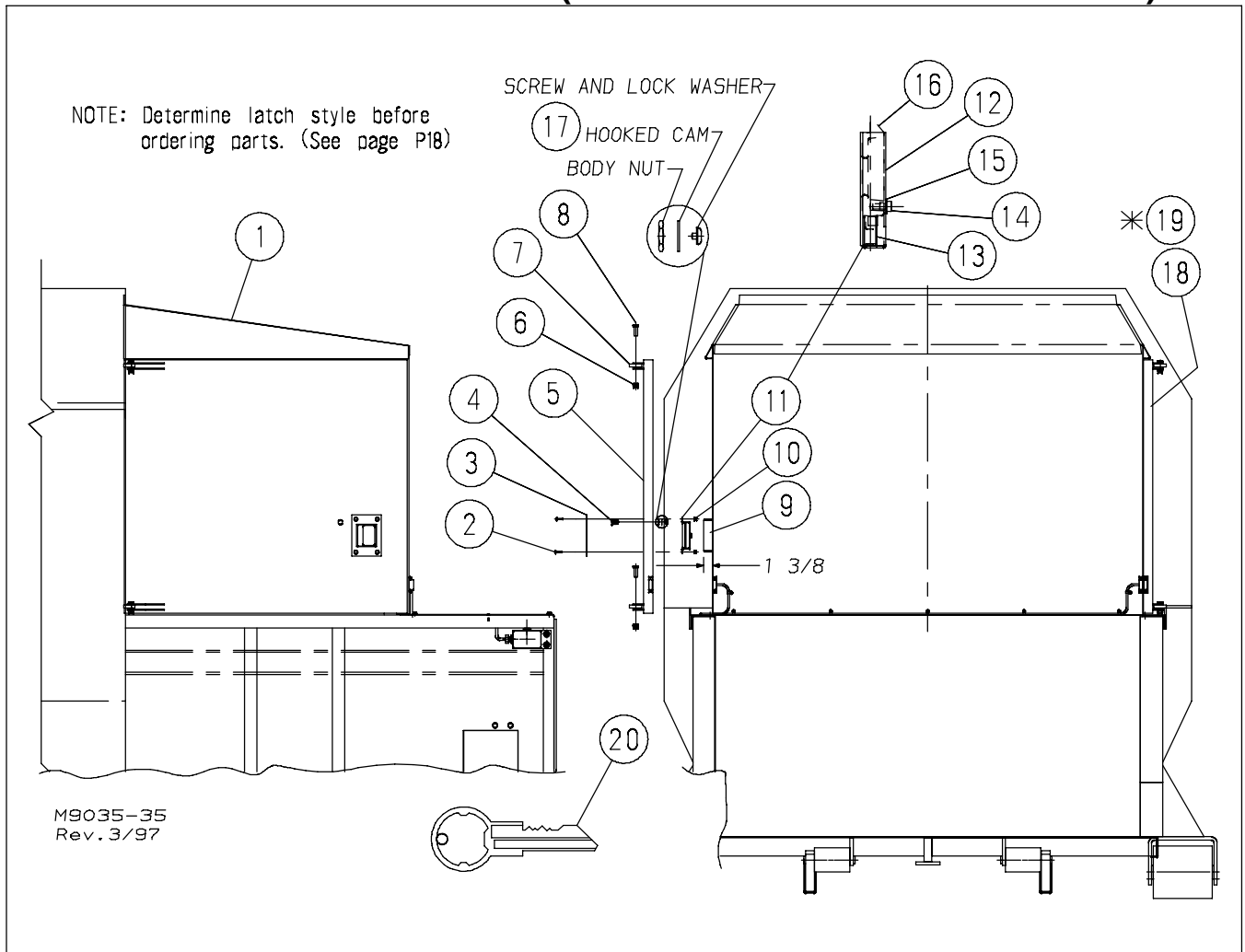
8/00

Item	Part Number	Part Description	Qty.
1	★ 79-272	Guard Switch Assembly (Double Door) Metal Housing	2
	★ 79-272	Guard Switch Assembly (Side Door) Metal Housing	1
	★ 79-483	Guard Switch Assembly Non-Metal Housing	1
2	79-273	Conduit Connector	1
3	62-431	#10NC x 5/8" Round Head Slotted Machine Screw	1
4	79-278	Cover Plate (Includes Gasket)	1
5	79-274	Flanged Inlet (Includes Gasket) - 2 Prong	1
	79-525	Flanged Inlet (Includes Gasket) - 3 Prong	1
6	79-277	Connector Box	1
7	62-109	3/8NC x 1-1/4" Cap Screw	1
8	63-103	3/8NC Self Locking Nut	1
9	79-281	Cable Clamp	3
10	62-425	3/8NC x 3/4" Hex Washer Thread Cutting Screw	2
11	9035-37-1	Mounting Plate	1
12	64-104	3/8" STD. Flat Washer	1
13	63-160	#10NC Nylon-Top Lock Nut	1
14	79-275	Straight Connector Body - 2 Prong	1
	79-526	Straight Connector Body - 3 Prong	1
15	79-276	Connector Boot	1
16	79-407	Pigtail	12 Ft.
	62-528	#10NC x 1/2" Hex Washer Thread Cutting Screw (Not Shown)	
	79-228	Wire Nut - Yellow (Not Shown)	

★ Note: Must determine type Guard Switch Assembly due to mounting.

★★ Note: Must determine if 2-Prong or 3-Prong before ordering

# SIDE DOOR HOPPER (STANDARD & LOW PROFILE)



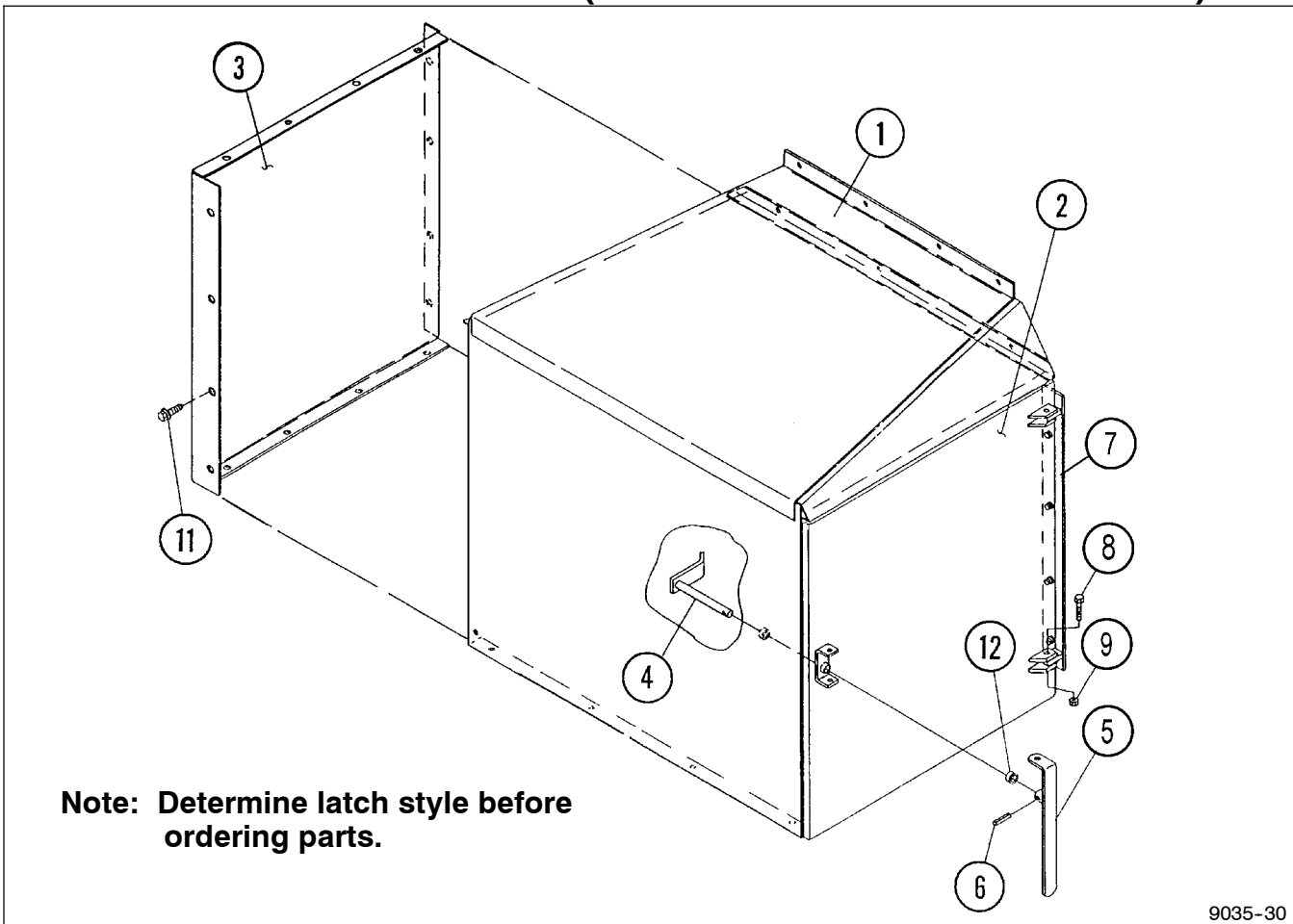
## FOR MODELS - Self Contained Compactors

3/99

Item	Part Number	Part Description	Qty.
1	9035-34-0A	Side Door Hopper Weldment	1
2	62-657	1/4NC x 1" Carriage Bolt	4
3	9110-1-27	Latch Cover Plate	1
4	82-229	Lock Assembly w/ Keys	1
5	9035-137-0	Left Side Door Weldment	1
6	★ 63-107	1/2NC Lock Nut	2
7	★ 9035-31-2	Lug	2
8	★ 62-136	1/2NC x 1-1/2" GD. 5 Cap Screw	2
9	★ 9035-139-0	Striker Weldment	1
10	★ 63-164	1/4NC Nylon-Top Lock Nut	4
11	★ 9110-28-0	Latch Assembly	1
12	9110-1-26	Latch Housing	1
13	76-209	Spring	1
14	62-670	3/8NC x 3/8" Set Screw	1
15	64-165	3/8" SAE Flat Washer	1
16	9110-1-25	Latch	1
17	★ 9110-1-29	Hooked Cam, Machined	1
18	★ 9035-138-0	Right Side Door Weldment	1
19	★ 9035-35-1	Side Panel	1
20	82-216	Key	1

★ If repairing Single Door Hopper, use 9035-35-1. If repairing Double Door Hopper, use 9035-138-0, and increase latch parts as needed. Latch parts quantities listed above are for single door only.

# SIDE DOOR HOPPER (STANDARD & LOW PROFILE)



**Note: Determine latch style before ordering parts.**

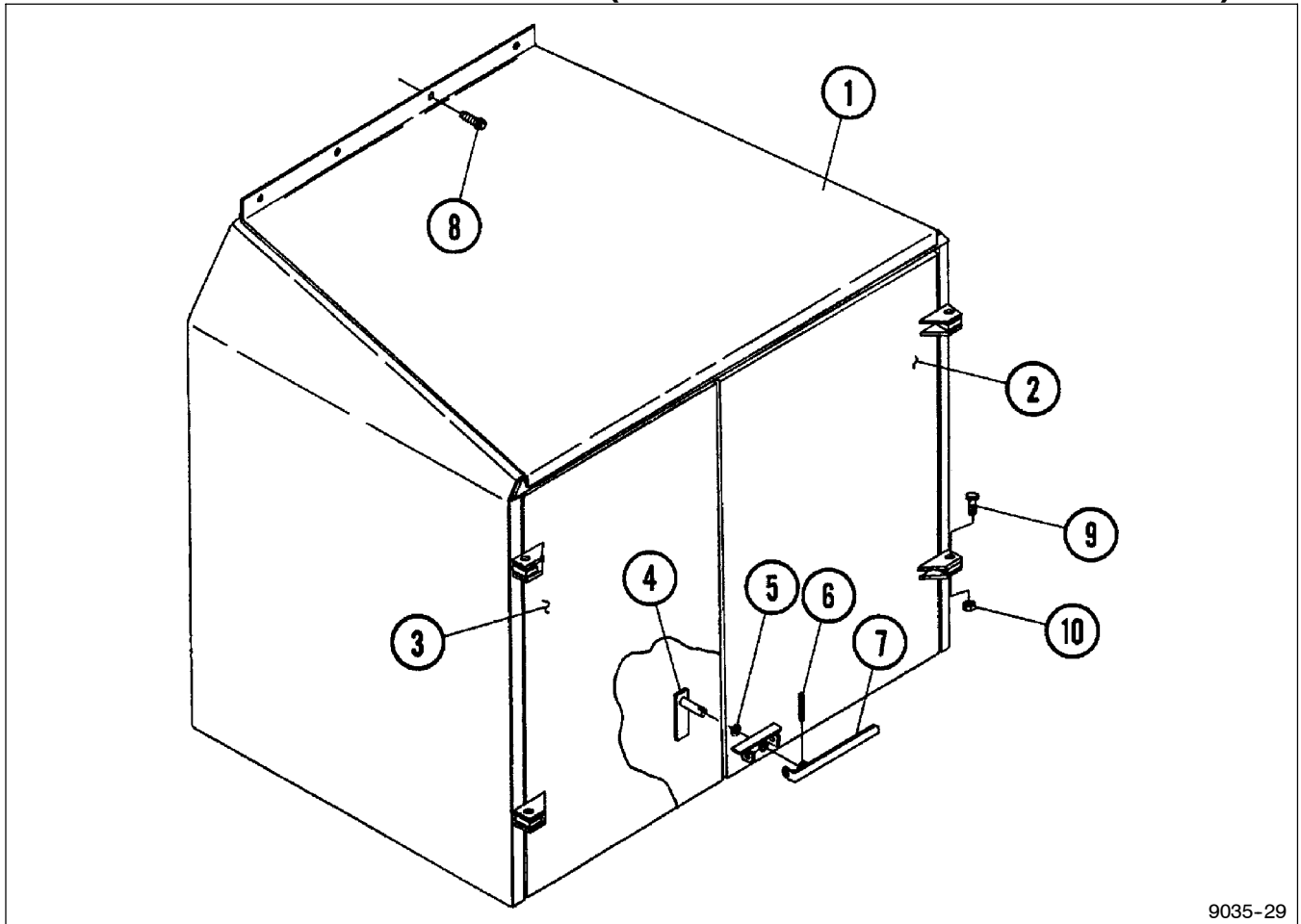
9035-30

**FOR MODELS - KP23 & KP35**

10/98

Item	Part Number	Part Description	Qty.
1	★ 9030-34-0	Dog House Weldment	1
	■ 9035-34-0	Dog House Weldment	1
2	★ 9030-30-0	Door Weldment	1
	■ 9035-30-0	Door Weldment	1
3	★ 9030-35-1	Side Panel	1
	■ 9035-35-1	Side Panel	1
4	9035-33-0	Latch Weldment	1
5	9035-32-0	Handle Weldment	1
6	60-604	1/4" DIA. x 1-1/4" Roll Pin	1
7	★ 9030-31-0	Hinge Weldment	1
	■ 9035-31-0	Hinge Weldment	1
8	62-136	1/2NC x 1-1/2" Cap Screw	2
9	63-107	1/2NC Self Locking Nut	2
10			
11	62-425	3/8NC x 3/4" Hex Washer Thread Cutting Screw	31
12	64-152	Machinery Bushing (Use as needed)	4
★	Used for Low Profile Hopper ONLY		
■	Used for Standard Hopper ONLY		

# FRONT DOOR HOPPER (STANDARD & LOW PROFILE)



9035-29

## FOR MODELS - ALL

10/98

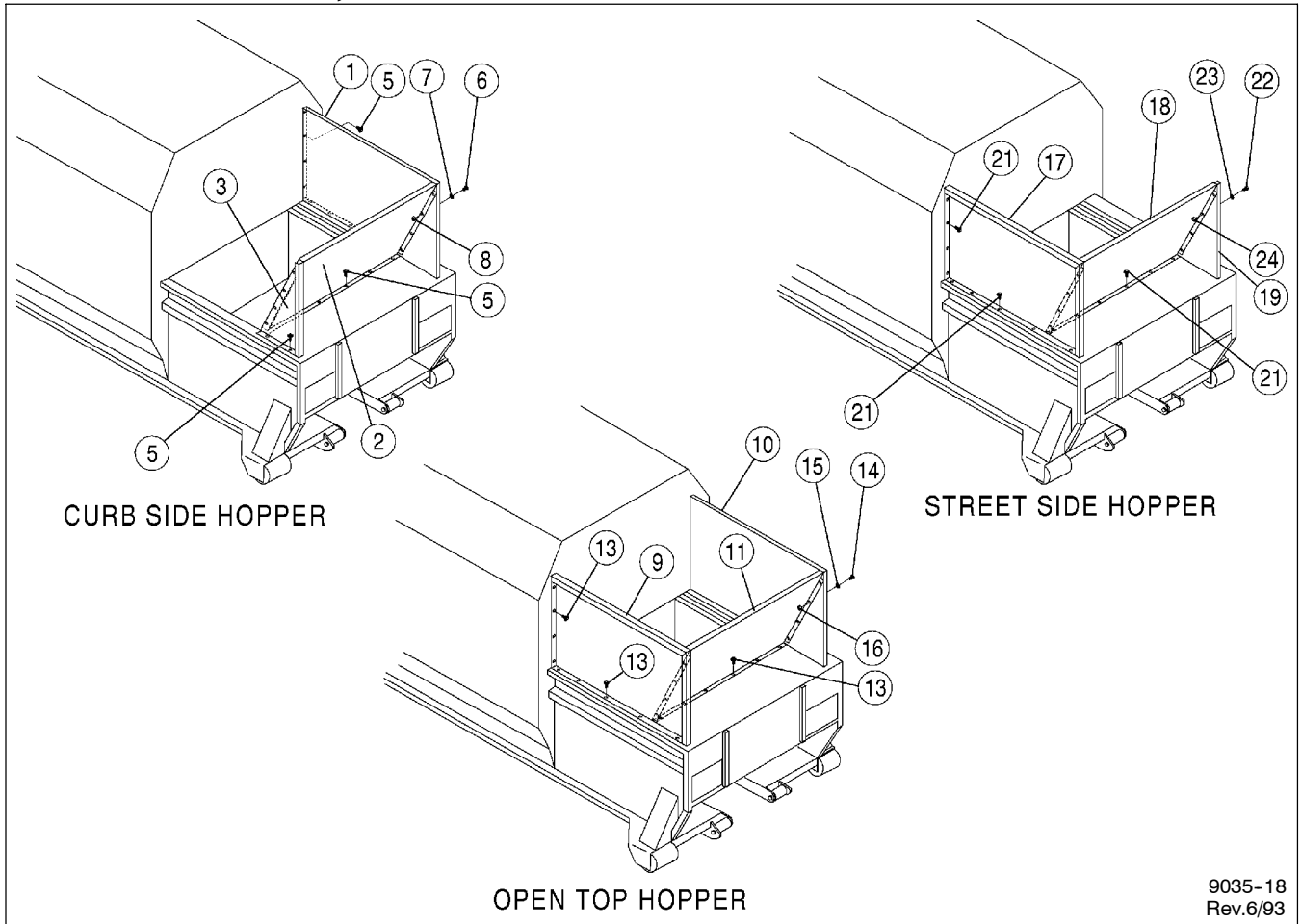
Item	Part Number	Part Description	Qty.
1	★ 9030-42-0	Dog House Weldment	1
	■ 9035-42-0	Dog House Weldment	1
2	★ 9030-51-0	Front Door Weldment	1
	■ 9035-51-0	Front Door Weldment	1
3	★ 9030-39-0	Door Weldment	1
	■ 9035-39-0	Door Weldment	1
4	9035-54-0	Latch Weldment	1
5	64-152	Machinery Bushing (Use as needed)	2
6	60-604	1/4" DIA. x 1-1/4" Roll Pin	1
7	9035-32-0	Handle Weldment	1
8	62-425	3/8NC x 3/4" Hex Washer Thread Cutting Screw	20
9	62-136	1/2NC x 1-1/2" Cap Screw	4
10	63-107	1/2NC Self Locking Nut	4

★ Used for Low Profile Hopper ONLY

■ Used for Stand Hopper ONLY

**This page intentionally left blank.**

# TOP LOAD, STREET SIDE & CURB SIDE HOPPERS

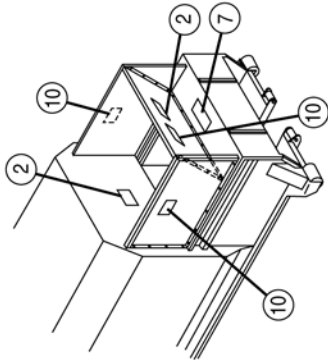


9035-18  
Rev.6/93

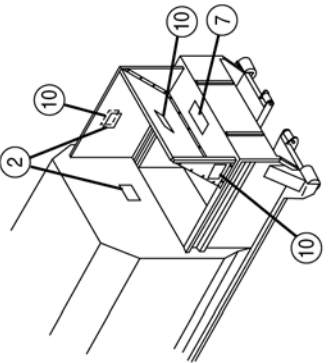
## FOR MODELS - ALL

10/98

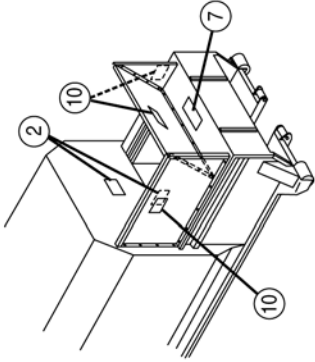
Item	Part Number	Part Description	Qty.
1	9035-63-2	Right Side Panel	1
2	9035-63-3	Front Panel	1
3	9035-65-1	Left Support	1
5	62-425	Hex Washer Thread Cutting Screw	19
6	62-108	3/8NC x 1" Cap Screw	8
7	64-104	3/8" STD. Flat Washer	8
8	63-103	3/8NC Hex Nut	8
9	9035-63-1	Left Side Panel	1
10	9035-63-2	Right Side Panel	1
11	9035-63-3	Front Panel	1
13	62-425	Hex Washer Thread Cutting Screw	27
14	62-108	3/8NC x 1" Cap Screw	8
15	64-104	3/8" STD. Flat Washer	8
16	63-103	3/8NC Self Locking Nut	8
17	9035-63-1	Left Side Panel	1
18	9035-63-3	Front Panel	1
19	9035-65-2	Right Support	1
21	62-425	Hex Washer Thread Cutting Screw	19
22	62-108	3/8NC x 1" Cap Screw	8
23	64-104	3/8" STD. Flat Washer	8
24	63-103	3/8NC Self Locking Nut	8



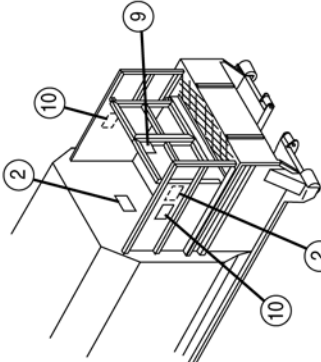
OPEN TOP HOPPER



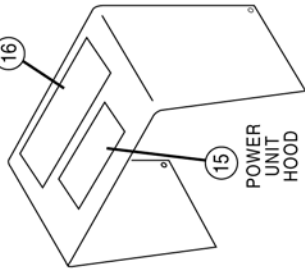
CURB SIDE HOPPER



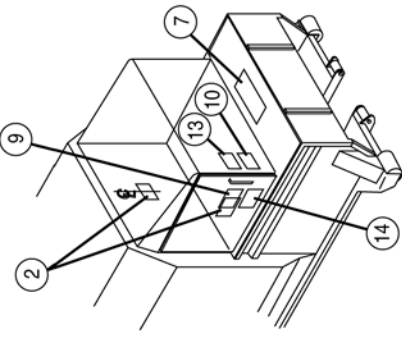
STREET SIDE HOPPER



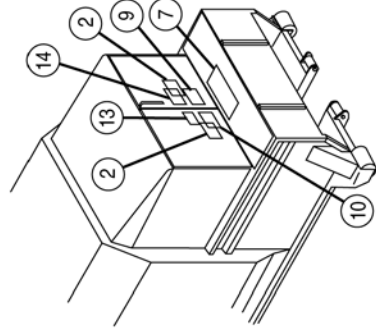
OPEN DOCK HOPPER



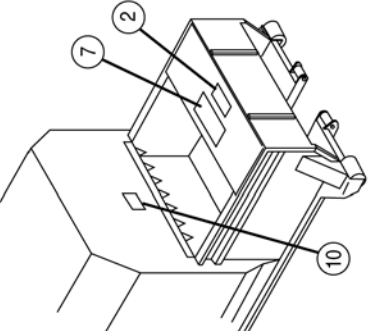
POWER UNIT HOOD



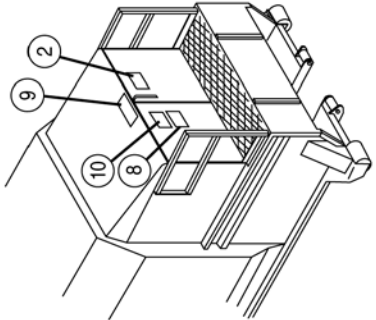
SIDE LOAD HOPPER



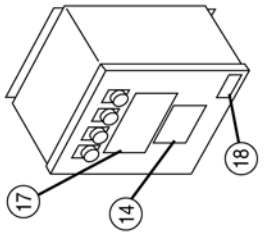
FRONT LOAD HOPPER



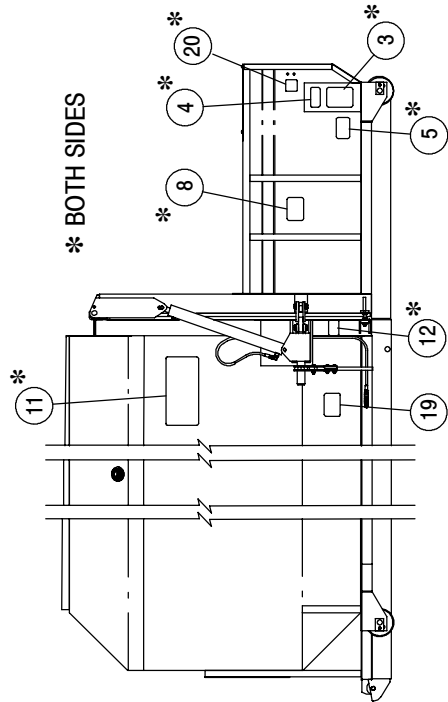
NO HOPPER



FRONT DOOR DOCK HOPPER



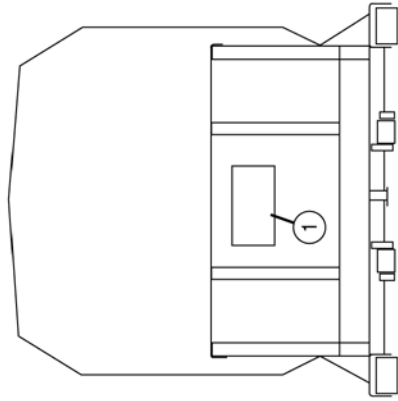
ELECTRICAL ENCLOSURE



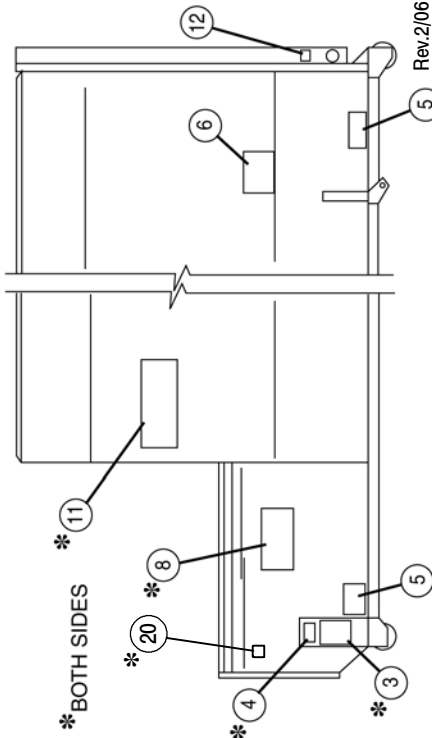
\* BOTH SIDES

KP20HT - 35HT SERIES SELF CONTAINED

Rev.1/06



KP20 - 35 SERIES SELF-CONTAINED



\* BOTH SIDES

KP20 - 35 SERIES SELF-CONTAINED

Rev.2/06  
M9035-16



**This page intentionally left blank.**