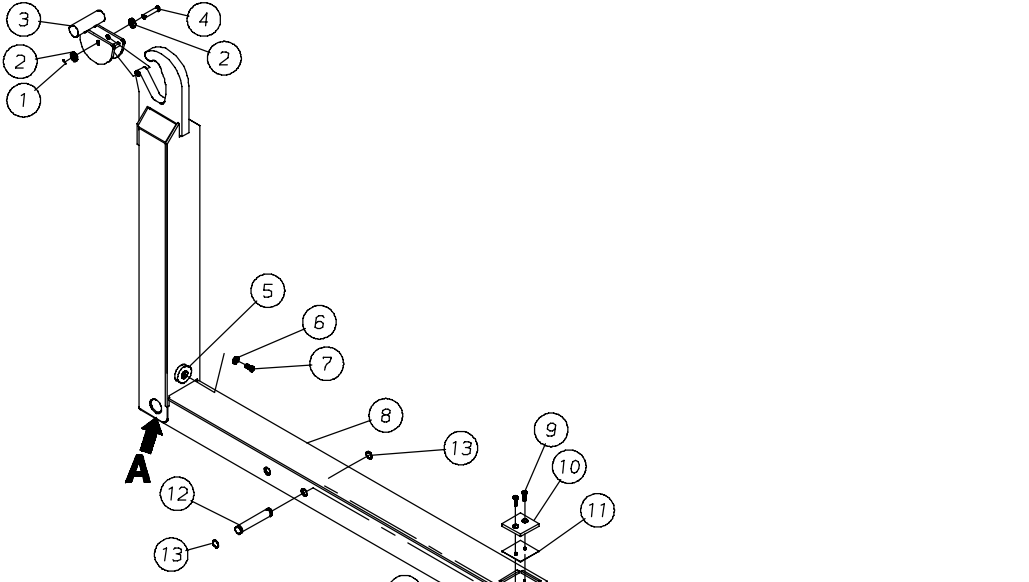


HYDRAULICS - MODEL KP710

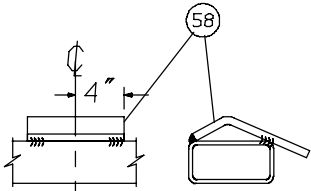
FOR MODEL - KP710

2/07

Item	Part Number	Part Description	Qty.
1	24-3026	1/2" x 65"(JIC) 3000 PSI Hose Assembly	4
2	25-304	37° Flare Male Coupler Hydraulic Fitting	4
3	24-465	1/2" x 82" Hydraulic Tube Assembly	2
4	25-310	3/4(M)JIC to 3/4(F)JIC 90° Swivel Hydraulic Fitting	3
5	25-326	37° (M) Bulkhead Tee Hydraulic Fitting	2
6	24-3036	1/2" x 30" (JIC) 3000 PSI Hose Assembly	6
7	25-301	O-Ring 37° Flare 90° Ell Hydraulic Fitting	5
8	23-703	5" x 49-3/4" (#600-3244) Hydraulic Cylinder Assembly	2
9	23-721	3" x 35" Hydraulic Cylinder Assembly	1
	23-722	3" x 48" Hydraulic Cylinder Assembly	1
10	25-300	3/4(M) O-Ring to 3/4(M) JIC Adapter Hydraulic Fitting	2
11	25-161	3/4NPT (F) Pipe Tee Hydraulic Fitting	1
12	25-571	3/4-14 Pipe Close Nipple Hydraulic Fitting	1
13	25-1175	3/4NPT(M) to 3/4 Hose Straight Hydraulic Fitting	3
14	25-1184	1NPT to 3/4NPT Hex Reducer Hydraulic Fitting	1
15	24-1134	3/4ID x 155" Suction Hose	1
16	25-494	Hose Clamp (1-3/16" to 1-3/8")	4
17	25-1180	1/2NPT(M) to 3/4 Hose End Hydraulic Fitting	1
18	25-493	3/4(M) O-Ring to 1/2NPT(F) 90° Hydraulic Fitting	1
19	25-2394	Valve SD4-1(SV) - 2BSLD-SAE	1
20	25-328	9/16(M) O-Ring to 3/4(M) JIC Hydraulic Fitting	2
21	24-371R	1/2" x 162" JIC Black 2W Hose Assembly	1
22	24-3002R	1/2" x 24" JIC 90° Black 2W Hose Assembly	2
23	25-485	3/4(M) JIC to 7/8(M) O-Ring 90° Hydraulic Fitting	2
24	82-249	9,000 # Winch (30-282 Series)	1
	82-250	12,000 # Winch (30-286 Series)	1
25	24-1139	3/4" x 18" Low Pressure Hose	1
26	25-379	7/8(M) O-Ring to 3/4 (M) JIC Adapter Hydraulic Fitting	5
27	25-342	1-1/16 O-Ring to 1-1/16 JIC Hydraulic Fitting	1
28	25-2495	SP Control Valve V20 (Reversed w/ Free Flow Spool)	1
29	25-2419	Power Beyond Sleeve SAE #10 (V20 Valve)	1
30	25-583	1-1/16 O-Ring to 1-1/16 JIC 90° Hydraulic Fitting	1
31	25-449	1-1/16(M) to 3/4NPT (F) 90° Hydraulic Fitting	1
32	24-656	3/4" x 60" JIC 3000 PSI Hose Assembly	1
33	25-534	1-1/16(M) JIC to 1NPT (M) Hydraulic Fitting	1
34	25-2391	Gear Pump (P20A396QUYL20-65)	1
35	25-235	Sight Gauge w/ Temp 5"	1
36	9610-35-0	Hydraulic Tank Weldment	1
37	25-2374	3/4NPT Magnetic Plug	1
38	25-233	Oil Strainer - 25 GPM	1
39	25-523	1-1/4NPT(M) to 1-1/4NPT(F) 90° Hydraulic Fitting	1
40	75-141	1-1/4NPT Close Nipple Hydraulic Fitting	1
41	25-2387	1-1/4NPT(F) x 1-1/4NPT Ball Valve	1
42	25-1178	1-1/4NPT(M) to 1-1/4 Hose Hydraulic Fitting	2
43	25-487	Hose Clamp (T-Bolt Type)	2
44	24-1133	1-1/4ID x 69" 100R4 Hose Assembly	1
45	25-215	Filler Cap Assembly	1
46	25-2375	In-Tank Filter	1
	25-2489	Filter Element (Long)	1
47	82-257	Hose Clamp - 1/2"O.D.	3
48	62-396	5/16NC x 3" GD5 Cap Screw	3
49	63-167	5/16NC Nylon-Top Lock Nut	3

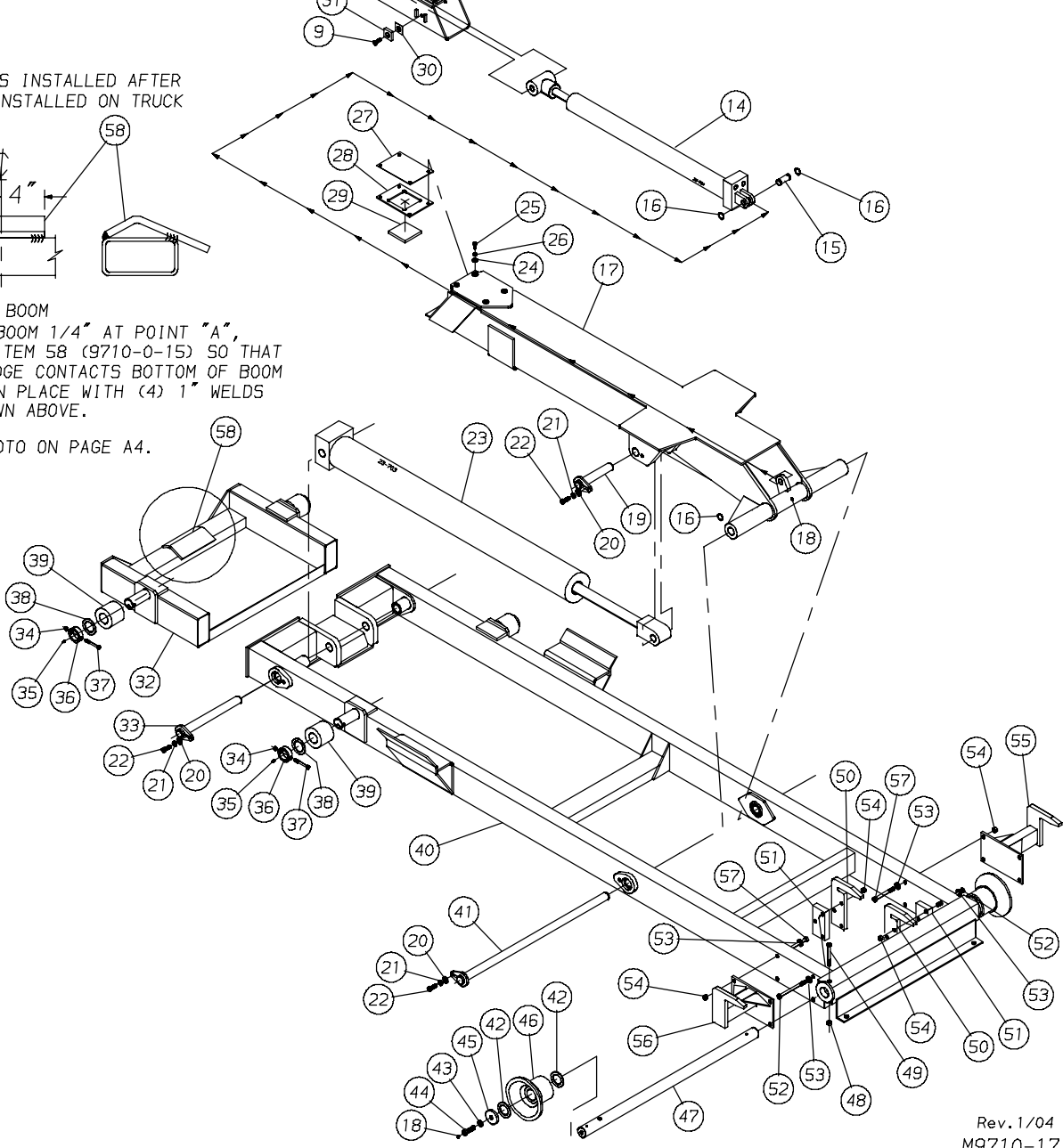


NOTE:
ITEM 58 IS INSTALLED AFTER
HOIST IS INSTALLED ON TRUCK



1. EXTEND BOOM
2. RAISE BOOM 1/4" AT POINT "A",
PLACE ITEM 58 (9710-0-15) SO THAT
BENT EDGE CONTACTS BOTTOM OF BOOM
3. WELD IN PLACE WITH (4) 1" WELDS
AS SHOWN ABOVE.

SEE PHOTO ON PAGE A4.



Rev. 1/04
M9710-17

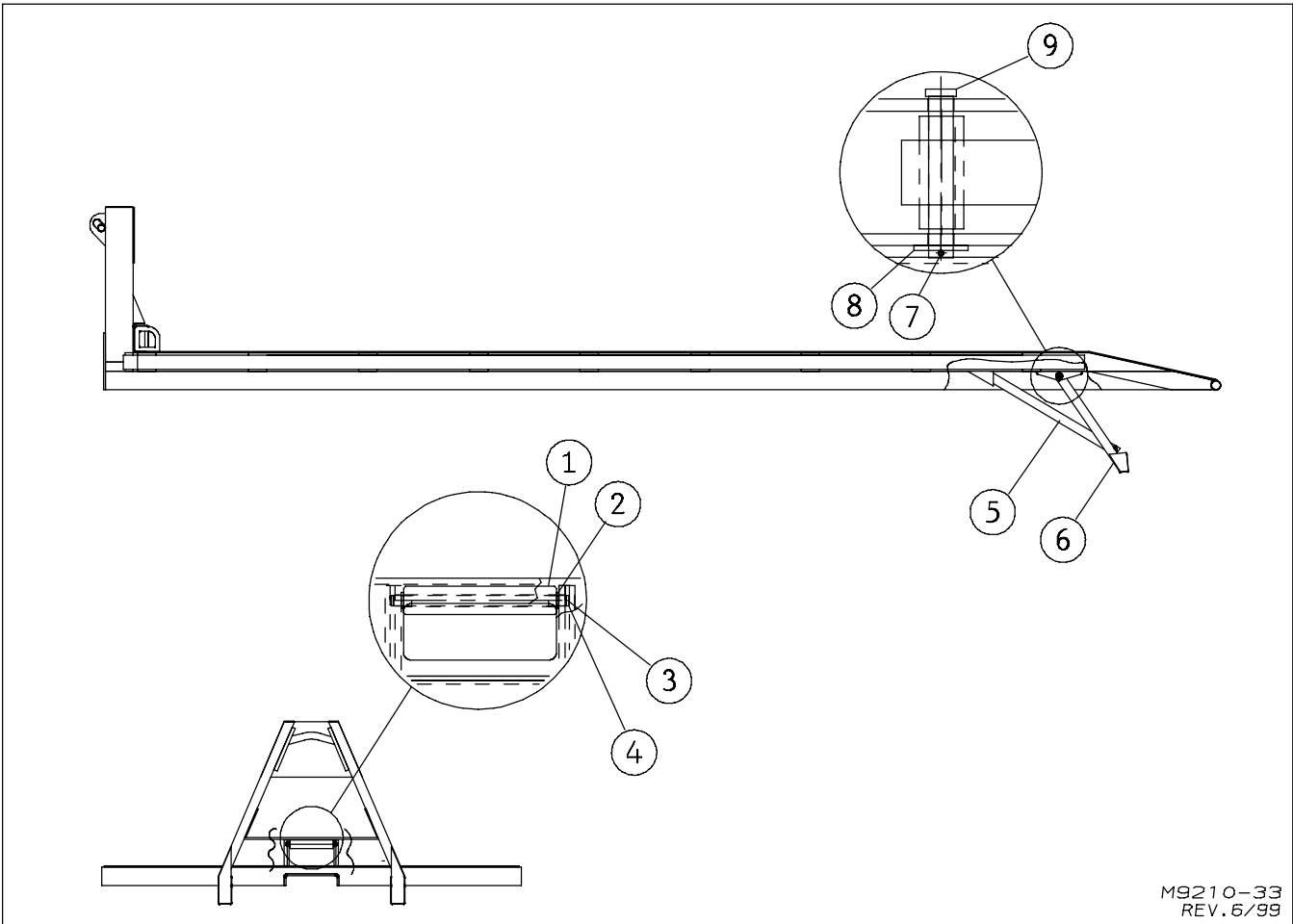
MAIN FRAME

FOR MODELS - ALL

2/07

Item	Part Number	Part Description	Qty.	Item	Part Number	Part Description	Qty.
1	60-701	5/32"DIA. x 1-1/4" Cotter Pin	1	31	■ 9610-120-3A	Inner Boom Pad (Small)	2
2	64-146	5/8" SAE Flat Washer	2	32	9610-538-0	Frame Extension Weldment (138)	1
3	9610-355-0	Lock Plate Weldment (54", 62")	1		9610-556-0	Frame Extension Weldment (156)	1
	9606-15-0	Hook Lock Weldment (36")	1	33	9610-28-0A	Base End Pin Weldment - Lift Cylinder	2
4	60-270	5/8"DIA. x 3" Clevis Pin	1	34	63-134	3/8NC Nylon-Top Lock Nut	2
5	82-242	Shock Pad	1	35	65-101	1/8" STD. Zerk	2
6	64-162	1/2" SAE Flat Washer	1	36	9274-415-3	Bolt Collar - Roller	2
7	62-300	1/2NC x 1" GD5 Cap Screw	1	37	62-123	3/8NC x 3-1/2" GD5 Cap Screw	2
8	● 9610-136-0	36" Inner Boom Weldment	1	38	64-154	3-1/8" x 2-1/8" x 10 Ga. Machine Bushing	2
	● 9610-54-0A	54" Inner Boom Weldment	1	39	9274-412-0	Outside Roller	2
	● 9610-62-0A	62" Inner Boom Weldment	1	40	9610-520-0	Main Frame Weldment	1
	★ 9610-354-0A	54" Inner Boom Weldment	1	41	9610-27-0	Main Pivot Shaft Weldment	1
	★ 9610-362-0A	62" Inner Boom Weldment	1	42	64-199	3" x 2" x 10 Ga. Machine Bushing	4
9	☆■ 62-718	3/8NC x 1" Flat Head Allen Bolt	6	43	64-109	5/8" STD. Lock Washer	2
10	■ 9610-120-5A	Inner Boom Pad (Large)	1	44	9606-108-10	Special Bolt	2
11	■ 9610-00-10	Shim, .06 Thick	2	45	9606-108-9	Retainer Washer	2
	■ 9610-00-14	Shim, .12 Thick	2	46	9606-105-0	Guide Roller Assembly	2
12	9610-00-12	Rod Pin - Extend Cylinder	1	47	9606-108-8	Roller Shaft	1
13	99-197	1-1/4" DIA. Retaining Ring	2	48	63-108	1/2NC Nylon-Top Lock Nut	1
14	23-721	3" x 35" Hydraulic Cylinder	1	49	62-351	1/2NC x 4-1/2" GD5 Cap Screw	1
	23-722	3" x 48" Hydraulic Cylinder	1	50	9606-208-15A	Lock Plate (KP706)	2
15	9610-120-7	Cylinder Pin - Extend Cylinder	1	51	9606-208-22	Hold Down Spacer (KP706)	2
16	99-201	1" DIA. Retaining Ring	2	52	62-395	1/2NC x 6" GD5 Cap Screw	4
17	9610-620-0	Outer Boom Weldment (120)	1	53	64-108	1/2" STD. Flat Washer	4 / 8
	★ 9610-638-0	Outer Boom Weldment	1	54	63-107	1/2NC Lock Nut	4 / 8
18	65-113	1/4NF Zerk	3	55	9610-80-0	Rt. Hold Down Weldment (KP710)	1
19	9610-26-0A	Rod End Pin Weldment - Lift Cylinder	2	56	9610-81-0	Lt. Hold Down Weldment (KP710)	1
20	64-108	1/2" STD. Flat Washer	5	57	62-351	1/2NC x 4-1/2" GD5 Cap Screw	8
21	64-107	1/2" STD. Lock Washer	5	58	9710-0-15	Boom Rest	1
22	62-420	1/2NC x 1-1/4" GD5 Cap Screw	5	59	■ 99-221	Loctite (use on ☆ items)	
23	23-703	5" x 49-3/4" Hydraulic Cylinder	2	● 108/120 CA Models			
24	■ 64-165	3/8" SAE Flat Washer	8	★ 138/156 CA Models			
25	☆■ 62-803	3/8NC x 7/8" GD5 Cap Screw	8	■ Included in 9710-84-0 Pad & Shim Kit			
26	■ 64-103	3/8" STD. Lock Washer	8				
27	■ 9610-00-4	1/8" Shim - Pad Retainer	2				
	■ 9610-00-3	1/16" Shim - Pad Retainer	2				
28	■ 9710-0-9	Pad Retainer	2				
29	■ 9610-120-2A	Outer Boom Pad	2				
30	■ 9610-00-8	Shim, .06 Thick	2				
	■ 9610-00-15	Shim, .10 Thick	2				

FLAT RACK



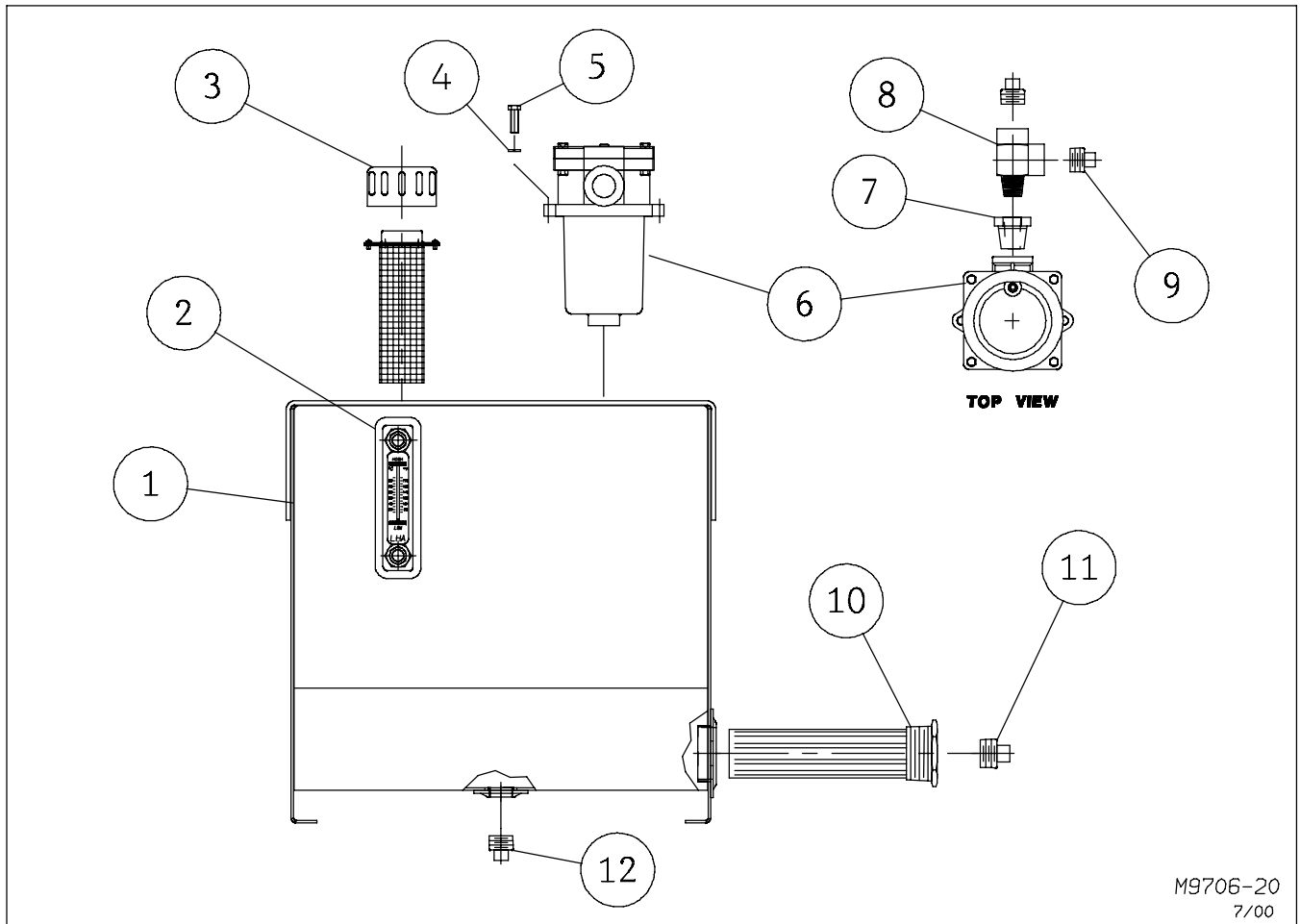
M9210-33
REV. 6/99

FOR MODELS - KP710

4/02

Item	Part Number	Part Description	Qty.
1	9606-45-4A	Roller	1
2	53-152	Flanged Wear Bushing (3/4" O.D. x 5/8" I.D.)	2
3	9606-45-5	Roller Pin	1
4	99-200	Retainer Ring - 5/8"	2
5	9602-3-0	ICC Slider Tube Weldment	3
6	9602-2-0A	ICC Bumper Weldment	3
7	60-217	3/4" DIA. x 5" Clevis Pin	9
8	64-113	3/4" STD. Flat Washer	12
9	60-724	1/8" DIA. x 1-1/4" Cotter Pin	9

HYDRAULIC TANK ASSEMBLY

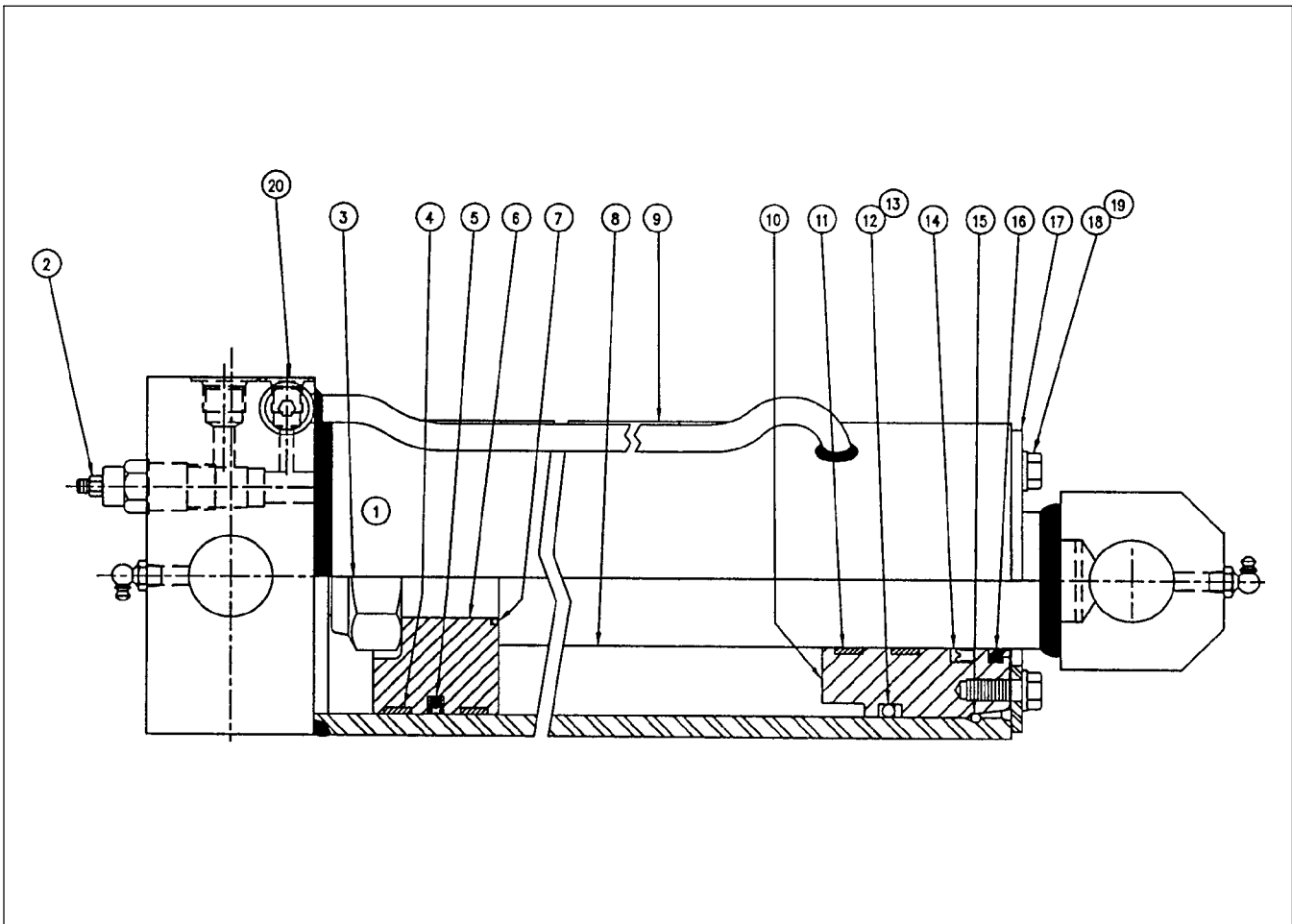


FOR MODELS - KP710

9/01

Item	Part Number	Part Description	Qty.
1	9610-35-0	Hydraulic Tank Weldment	1
2	25-235	Sight Gauge w/ Temp. 5"	1
3	25-215	Filler Cap Assembly	1
4	64-148	5/16" STD. Lock Washer	2
5	62-763	5/16NC x 1" Socket Head Cap Screw	2
6	25-2375	In-Tank Filter (TIF08-025-G)	1
7	25-1184	1NPT to 3/4NPT Reducer Hydraulic Fitting	1
8	25-1190	3/4(M)NPT to 3/4(F)NPT Service Tee Hydraulic Fitting	1
9	75-137	3/4NPT Pipe Plug	2
10	25-233	Oil Strainer (25 GPM)	1
11	75-161	1-1/4NPT Square Head Black Pipe Plug	1
12	25-2374	3/4NPT Magnetic Plug	1

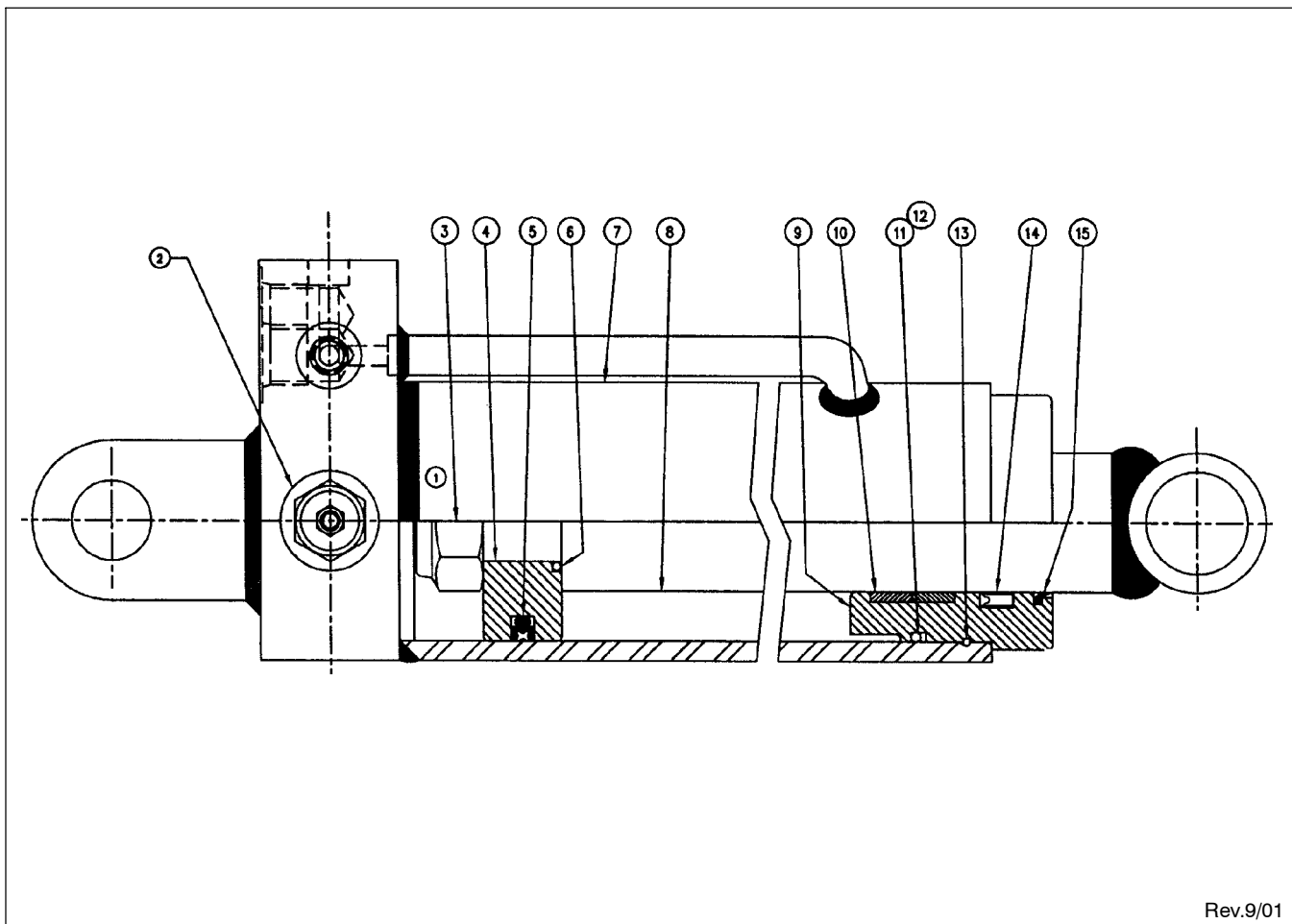
HYDRAULIC CYLINDER ASSEMBLY



23-703 5" x 49-3/4" Hydraulic Cylinder Assembly (LIFT) 4/00
 Retracted - 60" Extended - 109-3/4" Stroke - 49-3/4" Rod Dia. - 2-1/2"

Item	Part Number	Part Description	Qty.
1		Manufacturer's Label	1
2	25-2433	Counterbalance Valve	2
3		Full Locknut	1
4	★	Wear Ring	2
5	★	Piston Seal	1
6		Piston	1
7	★	O-Ring	1
8		Rod Assembly	1
9		Barrel Assembly	1
10		Sleeve	1
11	★	Wear Ring	2
12	★	O-Ring	1
13	★	Back-up Washer	1
14	★	Rod Seal	1
15		Lock Wire	1
16	★	Rod Wiper	1
17		Washer	1
18		Cap Screw	2
19		Lock Washer	2
20		Steel O-Ring Plug	3
	● 23-804	Seal Kit (★ Items Included in Kit)	
	●	Not Included in Cylinder Assembly	

GREEN HYDRAULIC CYLINDER ASSEMBLY

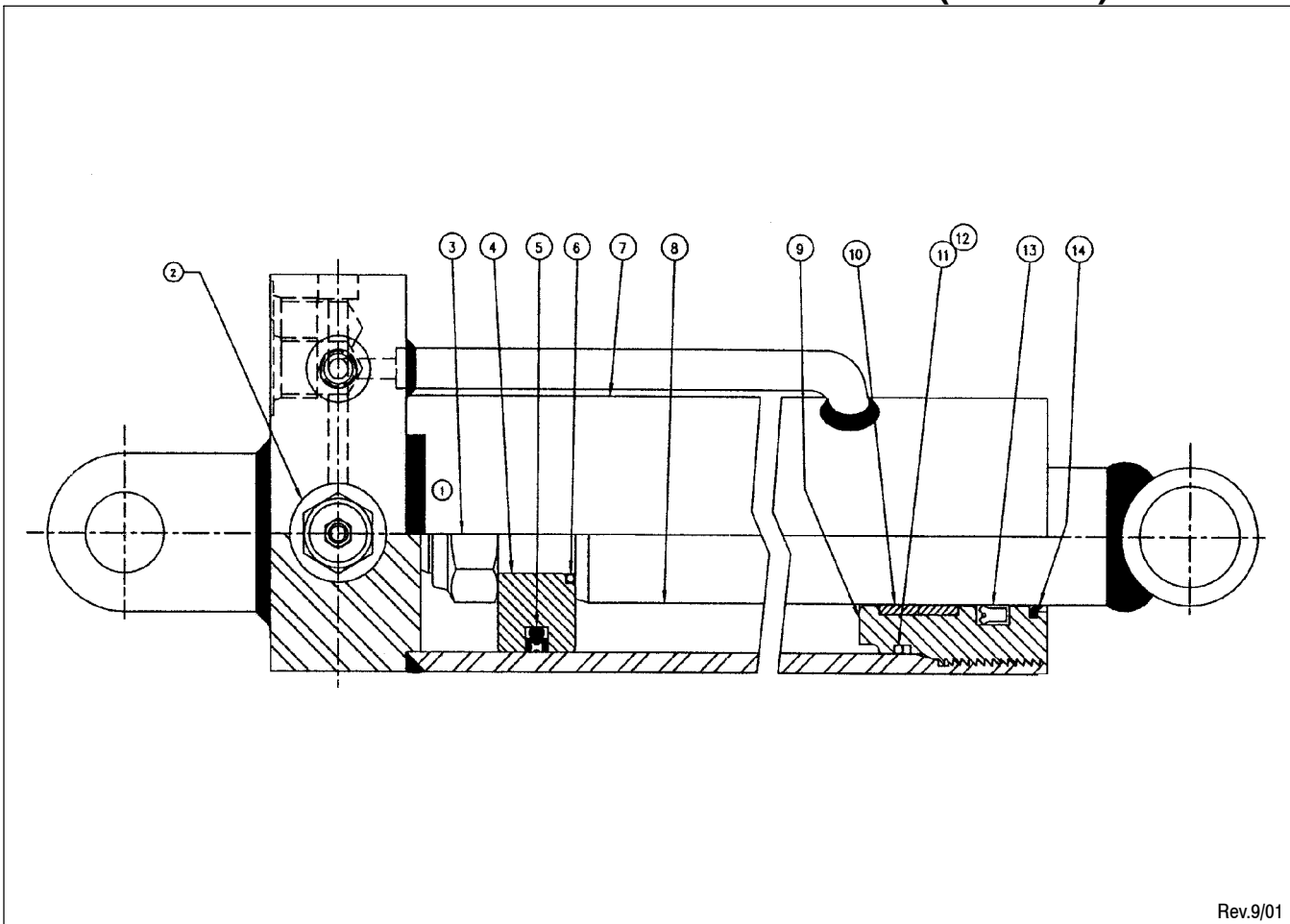


Rev.9/01

23-721 3" x 35" Green Hydraulic Cylinder Assembly (EXTEND) 9/01
 Retracted - 45" Extended - 80" Stroke - 35" Rod Dia. - 1-3/4"

Item	Part Number	Part Description	Qty.
1		Manufacturer's Label	1
2	25-2433	Counterbalance Valve	2
3		Full Locknut	1
4		Piston	1
5	★	Piston Seal	1
6	★	O-Ring	1
7		Barrel Assembly	1
8		Rod Assembly	1
9		Head	1
10	★	Wear Ring	1
11	★	O-Ring	1
12	★	Back-up Washer	1
13		Lock Wire	1
14	★	Rod Seal	1
15	★	Rod Wiper	1
16		Steel Plug (not shown)	1
	● 23-803	Seal Kit (★ Items Included in Kit)	
● Not Included in Cylinder Assembly			

HYDRAULIC CYLINDER ASSEMBLY (156 CA)

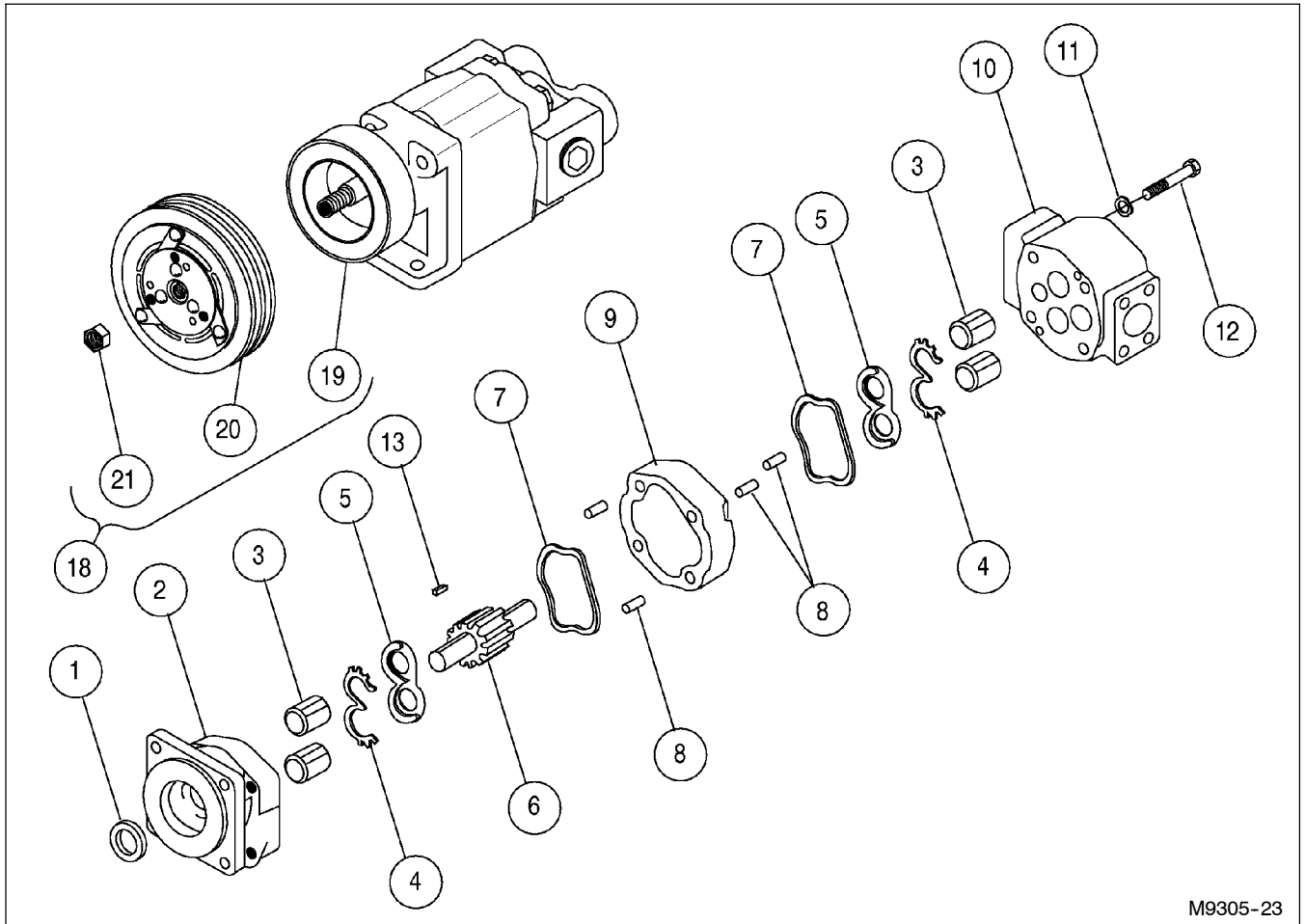


Rev.9/01

23-722 3" x 48" Hydraulic Cylinder Assembly (BOOM EXTEND) 9/01
 Retracted - 58" Extended - 106" Stroke - 48" Rod Dia. - 1-3/4"

Item	Part Number	Part Description	Qty.
1		Manufacturer's Label	1
2	25-2433	Counterbalance Valve	2
3		Full Locknut	1
4		Piston	1
5	★	Piston Seal	1
6	★	O-Ring	1
7		Barrel Assembly	1
8		Rod Assembly	1
9		Head	1
10	★	Wear Ring	2
11	★	O-Ring	1
12	★	Back-up Washer	1
13	★	Rod Seal	1
14	★	Rod Wiper	1
15		Steel Plug (not shown)	1
	● 23-803	Seal Kit (★ Items Included in Kit)	
		● Not Included in Cylinder Assembly	

MUNCIE PUMP & CLUTCH ASSEMBLIES



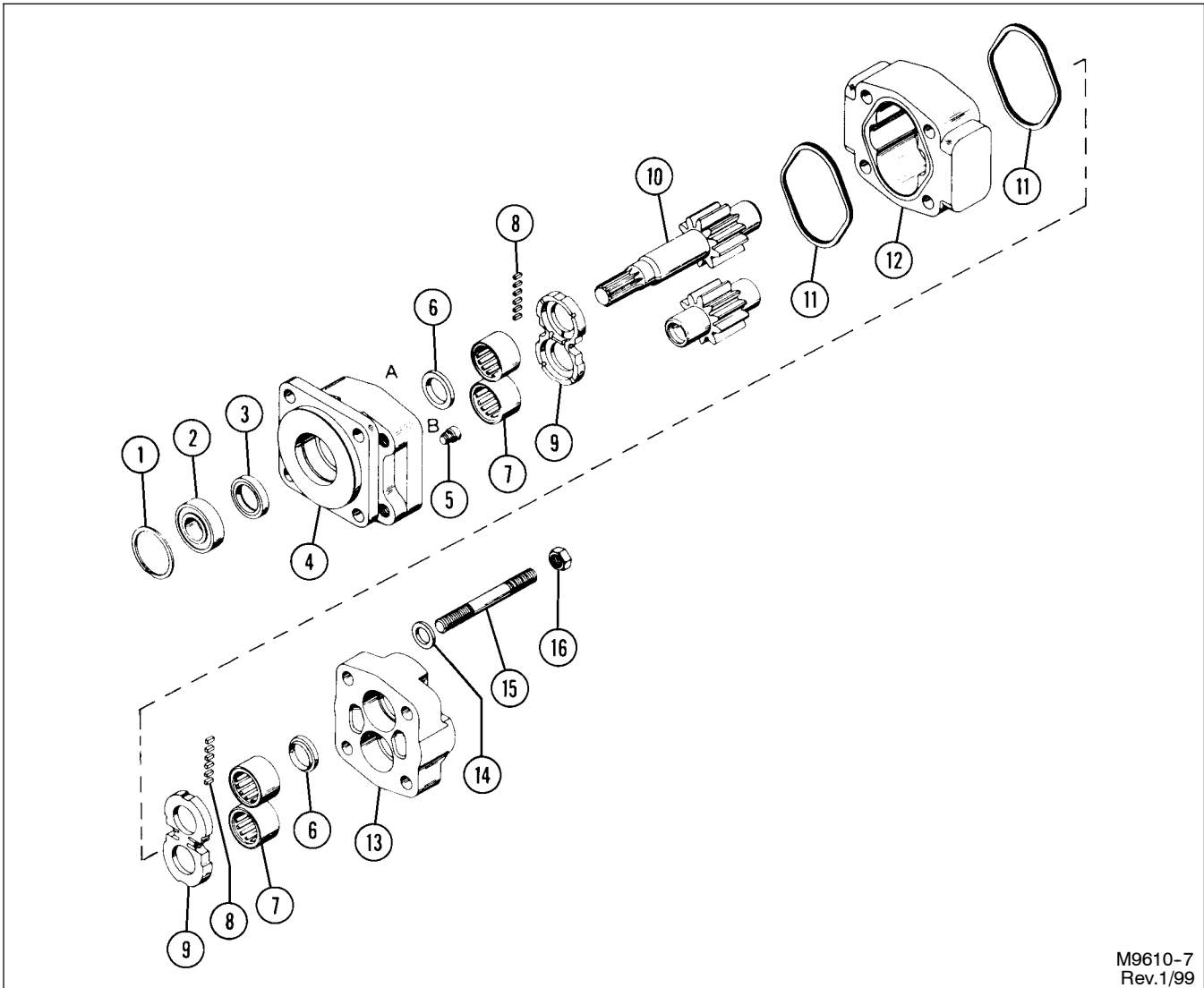
M9305-23

FOR MODELS - H SERIES PUMP

7/00

Item	Part Number	Part Description	Qty.
	25-2139	H Series Pump	
1		Shaft Seal	1
2		Front Cover	1
3		Bushings	4
4		Balance Seal	2
5		Wear Plate	2
6		Gear Set	1
7		Body Seal	2
8		Dowel Pins	4
9		Pump Housing	1
10		Rear Cover	1
11		Lock Washer	4
12		Cap Screw	4
13		Woodruff Key	1
14		Nut	1
15		Snap Ring	1
16		Pipe Plug - 3/4	1
17		Pipe Plug - 1-1/4	1
18	25-2165	Clutch	1
19	25-2166	Coil - Clutch	1
20	25-2167	Pulley - Clutch	1
21		1/2NF Hex Locking Jam Nut	1

DIRECT MOUNT HYDRAULIC PUMP



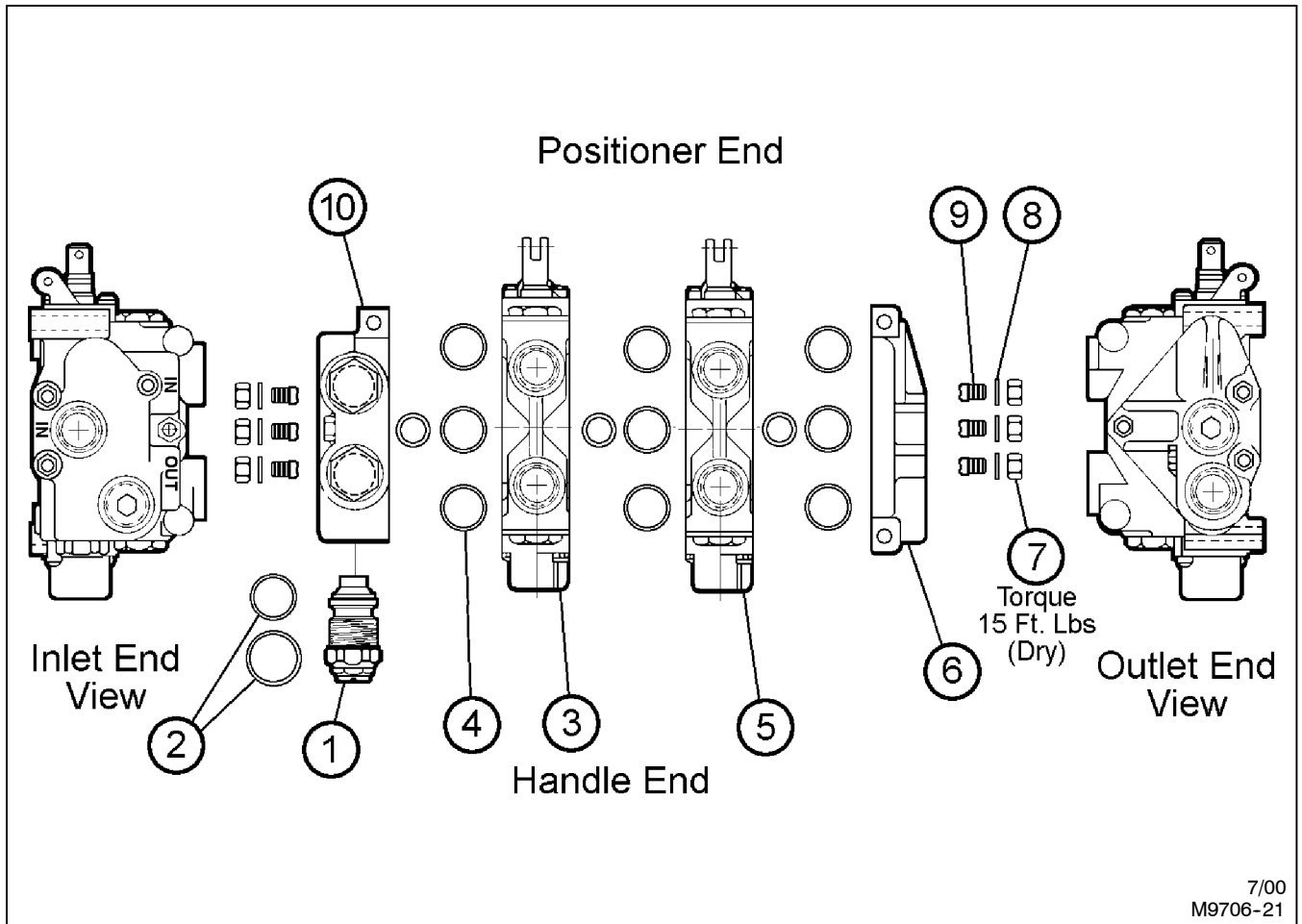
M9610-7
Rev.1/99

FOR MODELS -

6/97

Item	Part Number	Part Description	Qty.
	25-2391	Gear Pump	1
1		Snap Ring	
2		Outboard Bearing	
3		Seal	
4		Shaft End Cover	
5		Check Assemblies or Plug	
6		Ring Seals	
7		Roller Bearings	
8		Pocket Seals	
9		Thrust Plates	
10		Integral Drive Shaft and Gear Set	
11		Gasket Seals	
12		Gear Housing	
13		Port End Cover	
14		Washer	
15		Stud or Cap Screw	
16		Nut	

GRESEN VALVE ASSEMBLY

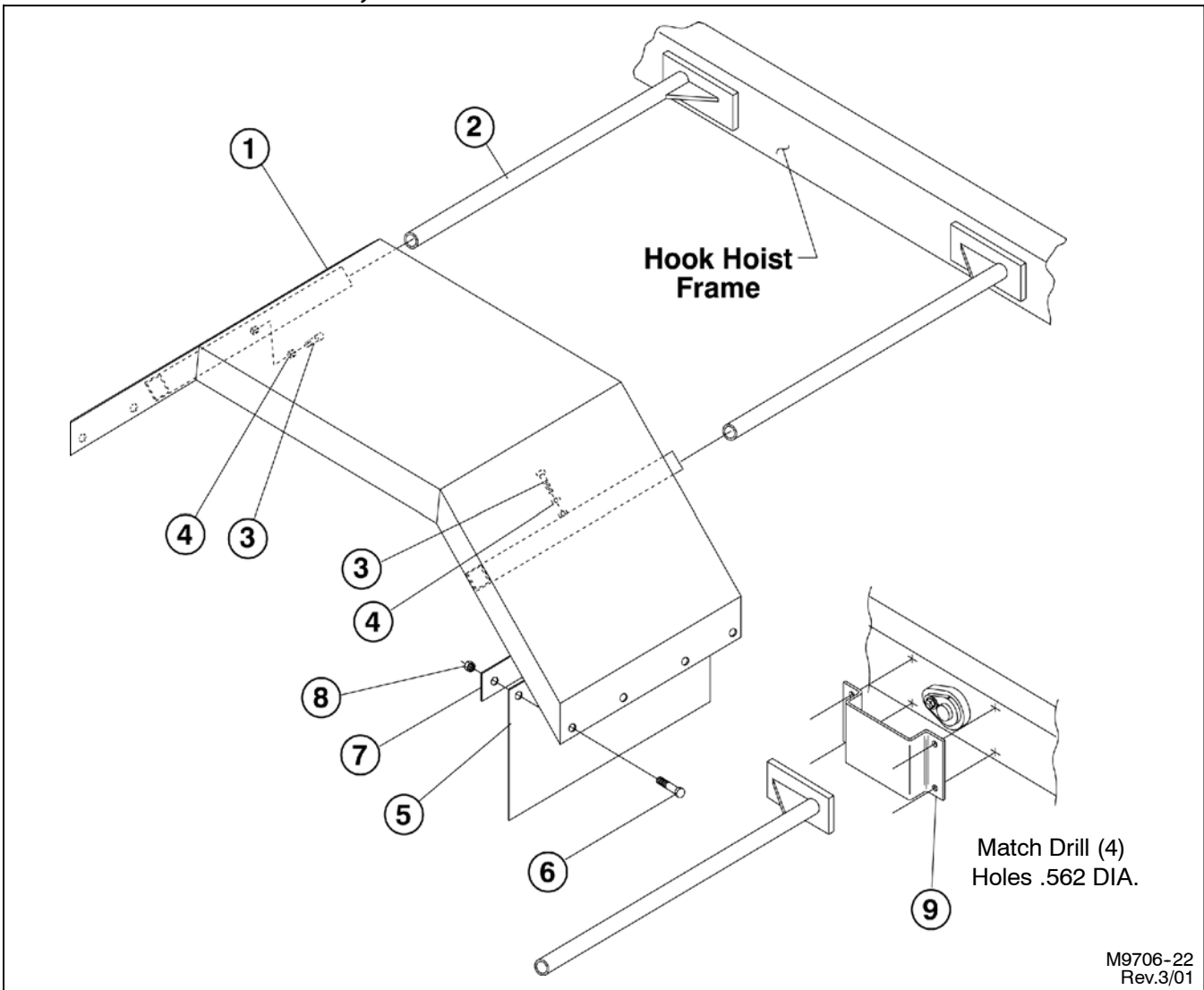


FOR MODELS - ALL

11/00

Item	Part Number	Part Description	Qty.
	25-2495	Gresen V20 2 Spool Valve Assembly (Reversed)	1
1	25-2409	Main Relief Valve	1
2	25-2413	Relief Valve Seal Kit (WH Std. Relief)	1
3	25-2508	Valve Section - 4 Way, 3 Position, Free Flow Spool (Reversed)	1
4	25-2408	Valve Section Seal Kit	1 / Section
5	25-2502	Valve Section - 4 Way, 3 Position Spool (Reversed)	1
6	25-2412	Outlet Cover	1
7		Hex Nut	6
8		Lock Washer	6
9		Studs	3
10	25-2411	Inlet Cover	1

FENDERS, SUPPORT TUBES & MUD FLAPS



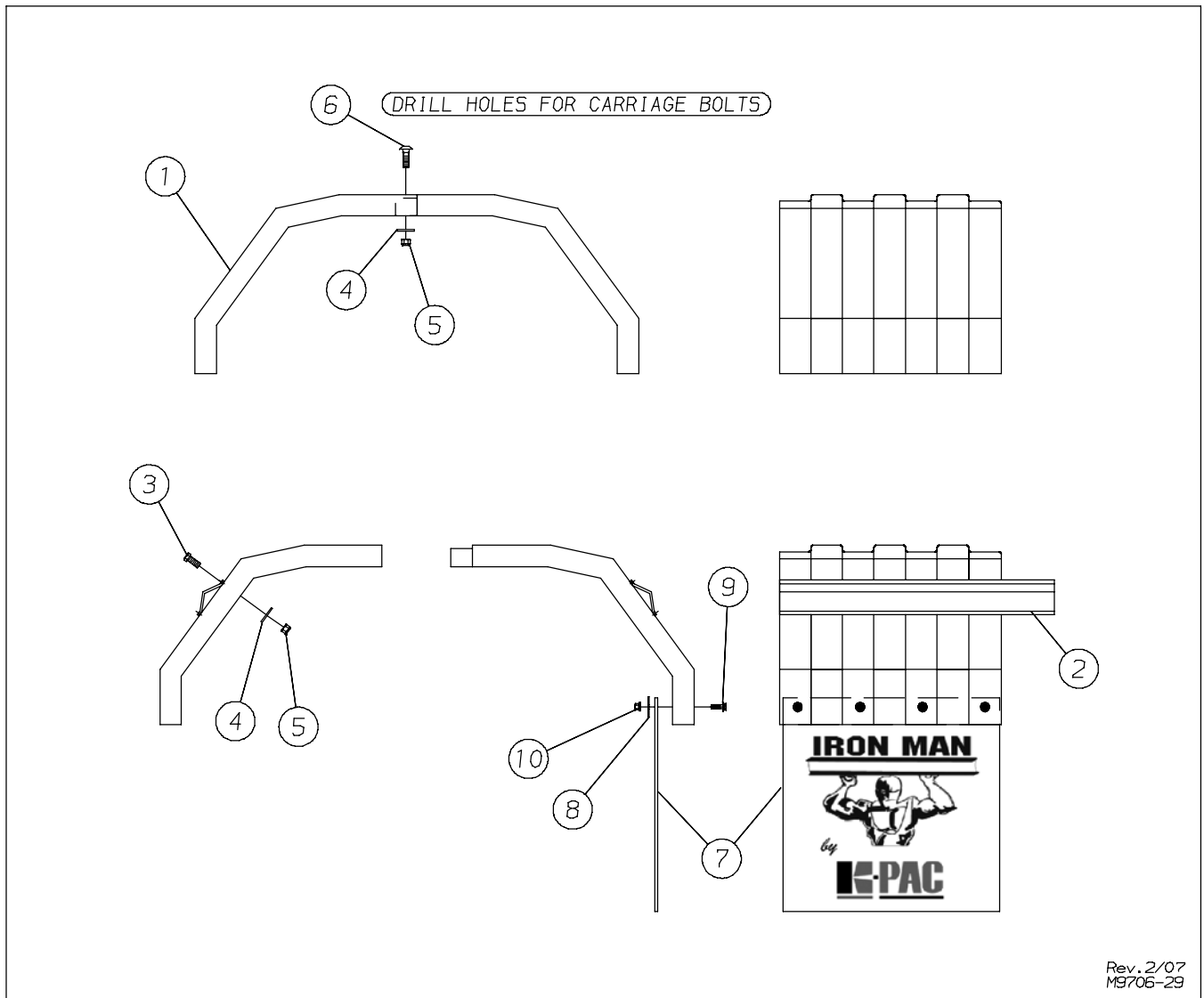
M9706-22
Rev.3/01

FOR MODELS - ALL

4/01

Item	Part Number	Part Description	Qty.
1	9305-55-0A	Standard Fender Weldment - (Width = 25-1/2")	1
	9305-57-0A	Narrow Fender Weldment - (Width = 22-1/4")	1
2	9305-56-0	Fender Support Weldment	2
3	62-503	1/2NC x 1-1/2" Set Screw	2
4	63-106	1/2NC Hex Nut	2
5	44-129	Mud Flap	1
6	62-108	3/8NC x 1" GD.5 Cap Screw	4
7	9274-0-1	Mud Flap Backing Plate	1
8	63-134	3/8NC Self Locking Nut	4
9	9610-0-13	Fender Mounting Bracket (Optional)	Spec.

PLASTIC FENDERS

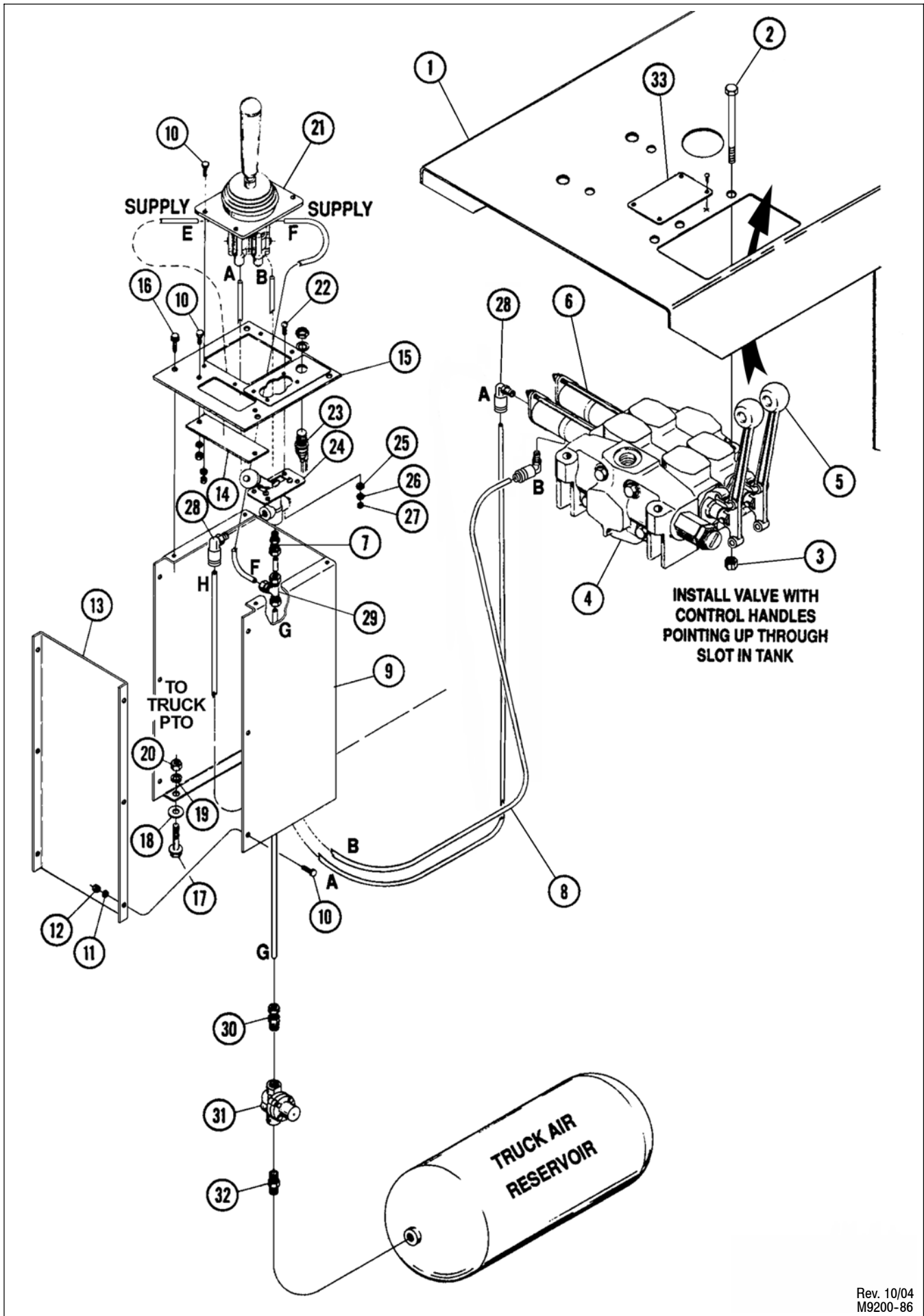


Rev. 2/07
M9706-29

FOR MODELS - KP710

2/07

Item	Part Number	Part Description	Qty.
1	44-190	Set of Plastic Fenders - 52"	1
	44-188	Set of Plastic Fenders - 44"	
2	82-255	Mounting Kit for 44-190	1
3	★	5/16NC x 1" Hex Head Cap Screw	16
4	★	5/16" STD. Flat Washer	23
5	★	5/16NC Nylon-Top Lock Nut	23
6	★	5/16NC x 1-1/4" Carrier Bolt	7
7	44-220	Ironman Mud Flap (24" x 24")	2
8	9724-0-1	Mud Flap Backing Plate	2
9	62-367	3/8NC x 3/4" Hex Flange Serrated Bolt	8
10	63-140	3/8NC Hex Flange Serrated Nut	8
★ Items Included in 82-255 Mounting Kit			



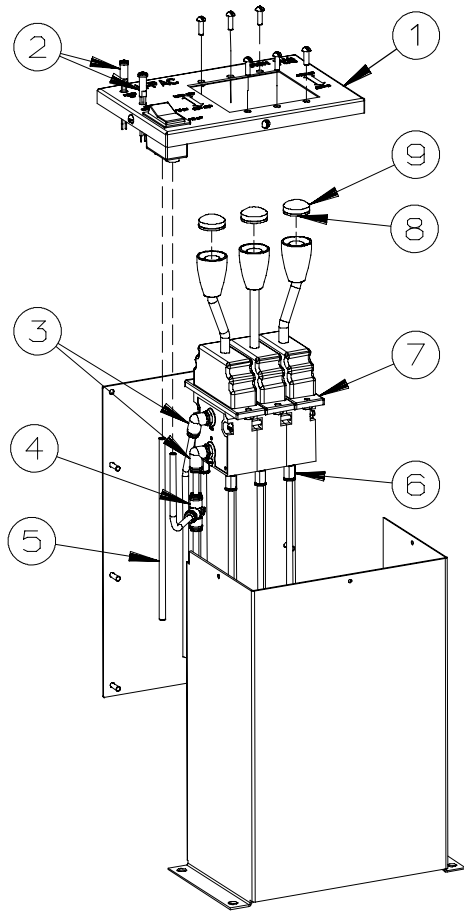
AIR CONTROLS

FOR MODEL - KP710

2/07

Item	Part Number	Part Description	Qty.
1		Hydraulic Tank - 20 Gallon	1
2	62-394	5/16NC x 2-1/2" GD5 Cap Screw	3
3	63-167	5/16NC Nylon Lock Nut	3
4	25-2495	Control Valve - 2 Spool V20 (Reversed Wiff Spool)	1
5	9610-45-0	Handle Kit - V20 Valve	2
6	82-315	Air Actuator Assembly	2
7			
8	82-124	Air Line - 80'	
	9274-196-0	Air Control Tower Assembly	1
9	9274-196-2	Tower	1
10	62-530	1/4NC x 1/2" Cap Screw	14
11	64-100	1/4" STD. Lock Washer	14
12	63-100	1/4NC Hex Nut	14
13	9274-196-3	Cover	1
14	9274-196-4	Cap	1
15	9274-196-1	Air Control Mounting Plate	1
16	62-342	1/4NC x 3/4" Hex Washer Thread Cutting Screw	4
17	62-115	3/8NC x 1-1/2" Hex Washer Thread Cutting Screw	4
18	64-104	3/8" STD. Flat Washer	4
19	64-103	3/8" STD. Lock Washer	4
20	63-102	3/8NC Hex Nut	4
21	82-157	Joystick Controller	1
22	62-485	#10NC x 1/2" Cross Recess Pan Head Machine Screw	4
23		P.T.O. Indicator Light	1
24		Air Valve	1
25	64-158	#10 Flat Washer	4
26	64-170	#10 External Tooth Lock Washer	4
27	63-151	#10 Hex Nut	4
28	82-313	1/8NPT Male - 1/4" Tube 90° Compression Fitting	1
29	82-314	1/4" Tube Quick Lock Tee	1
30	82-163	3/8NPT Male - 1/4" Tube Straight Compression Fitting	1
31		Pressure Protection Valve (customer supplied)	1
32	82-167	1/4NPT Hex Nipple	1
33	74-478	Decal - Important Operation Instructions	1

AIR CONTROLLER ASSEMBLY



82-344 KIT INCLUDES CONTROLLER WITH STRAIGHT HANDLE, CLEAR CAP, 2 SWIVEL CONNECTORS, 2 O-RINGS, AND LONGER SCREWS TO RETAIN SECTIONS

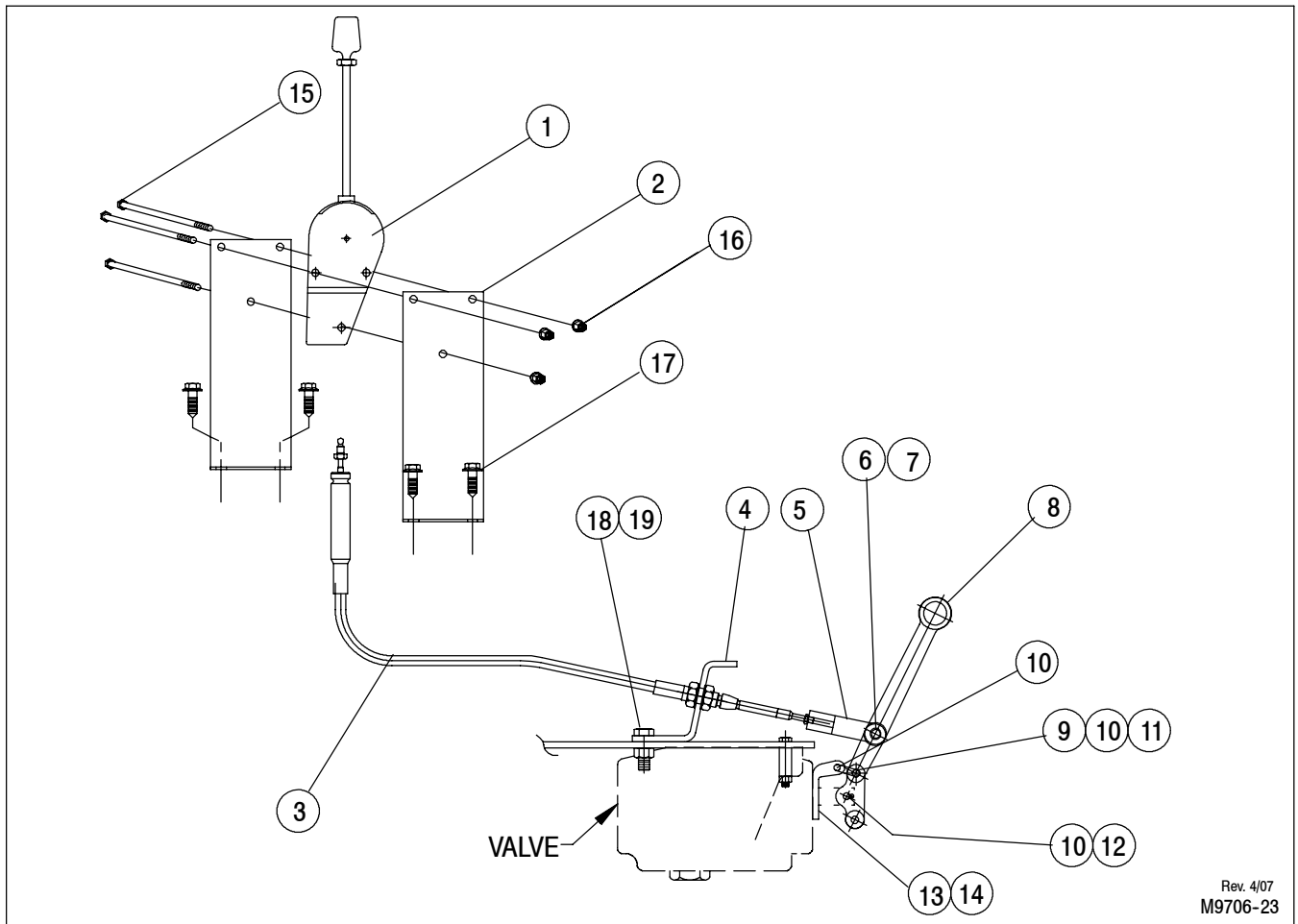
82-345 KIT INCLUDES ELECTRIC PTO SWITCH AND WIRING

FOR MODELS - ALL

2/07

Item	Part Number	Part Description	Qty.
1	82-341	Tower Cover (Stainless Steel)	1
2	79-579	LED Lamp (Includes retaining clip)	2
3	82-313	Elbow, Swivel	2
4	82-314	Tee, Swivel	1
5	82-124	Air Line 1/4od SAE J844 Type "A"	Spec.
6	82-346	Connector, Swivel	4/6★
7	82-332	Pneumatic Controller, 2-Section	1
	82-333	Pneumatic Controller, 3-Section	1
8	74-636	Decals, Controls	1
9	82-343	Clear Cap	2/3★
	82-339	O-Ring (between sections)	2/4★
	82-344	Conversion Kit from 2 To 3 Sections	
	82-345	Conversion Kit To Electric PTO Switch	
Doubled Quantities Reflect 2-Sections / 3 Sections★			

CABLE CONTROLS



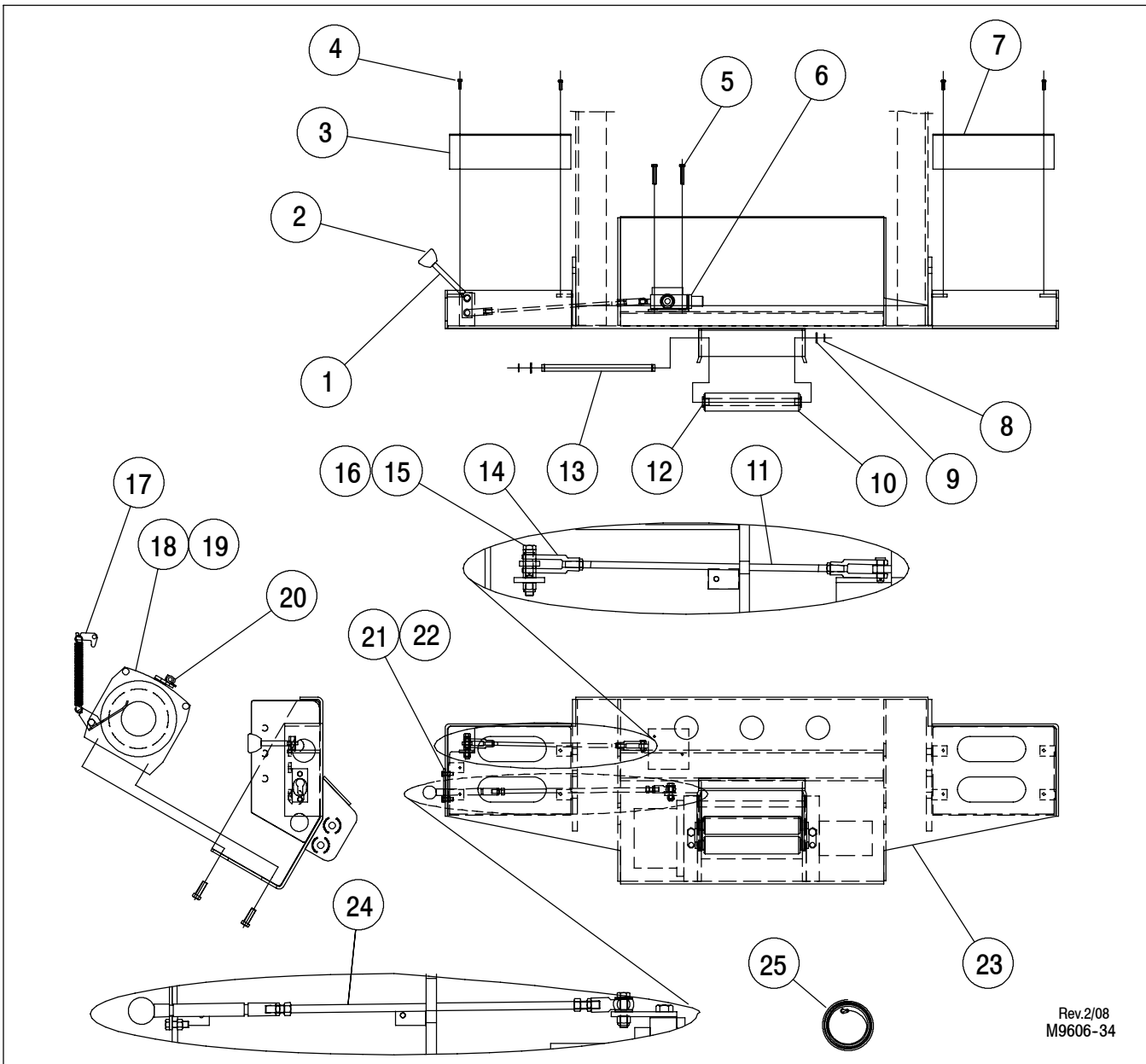
Rev. 4/07
M9706-23

FOR MODELS - KP710

10/07

Item	Part Number	Part Description	Qty.	
			2 spool	3 spool
1	82-238	Controller	2	3
2	9274-0-1305	Control Mount	2	2
3	72-132	Cable - 108" Long	2	3
	72-131	Cable - 156" Long	2	3
	72-109	Cable - 252" Long	2	3
4	9610-0-17	Control Cable Bulkhead Plate	1	0
	9610-0-23	Control Cable Bulhead Plate	0	1
	72-108	Clevis Kit (Includes ONE each of ● Items)	2	3
5	●	Clevis w/ 3/8" Hold		
6	●	Pin		
7	●	Cotter Pin		
	9610-45-0	Handle Kit (Includes ★ Items)	2	3
8	★ 9610-108-1	Valve Handle		
	★ 25-2505	V-20 Valve Linkage Kit (Includes ■ Items)		
9	■	Link		
10	■	Cotter Pin		
11	■	Link Plate		
12	■	Pin		
13	★ 25-2199	Handle Bracket		
14	★ 25-2201	Screw		
15	62-106	1/4NC x 4" GD5 Cap Screw	3	0
	62-839	1/4NC x 6" GD5 Cap Screw	0	3
16	63-141	1/4NC Hex Flange Serrated Nut	3	3
	62-115	3/8NC x 1-1/2" Hex Washer Thread Cutting Screw	3	3
17	62-420	1/2NC x 1-1/4" GD5 Cap Screw	2	2
18	63-107	1/2NC Lock Nut	2	2

DELUXE BUMPER AND OPTIONAL WINCH



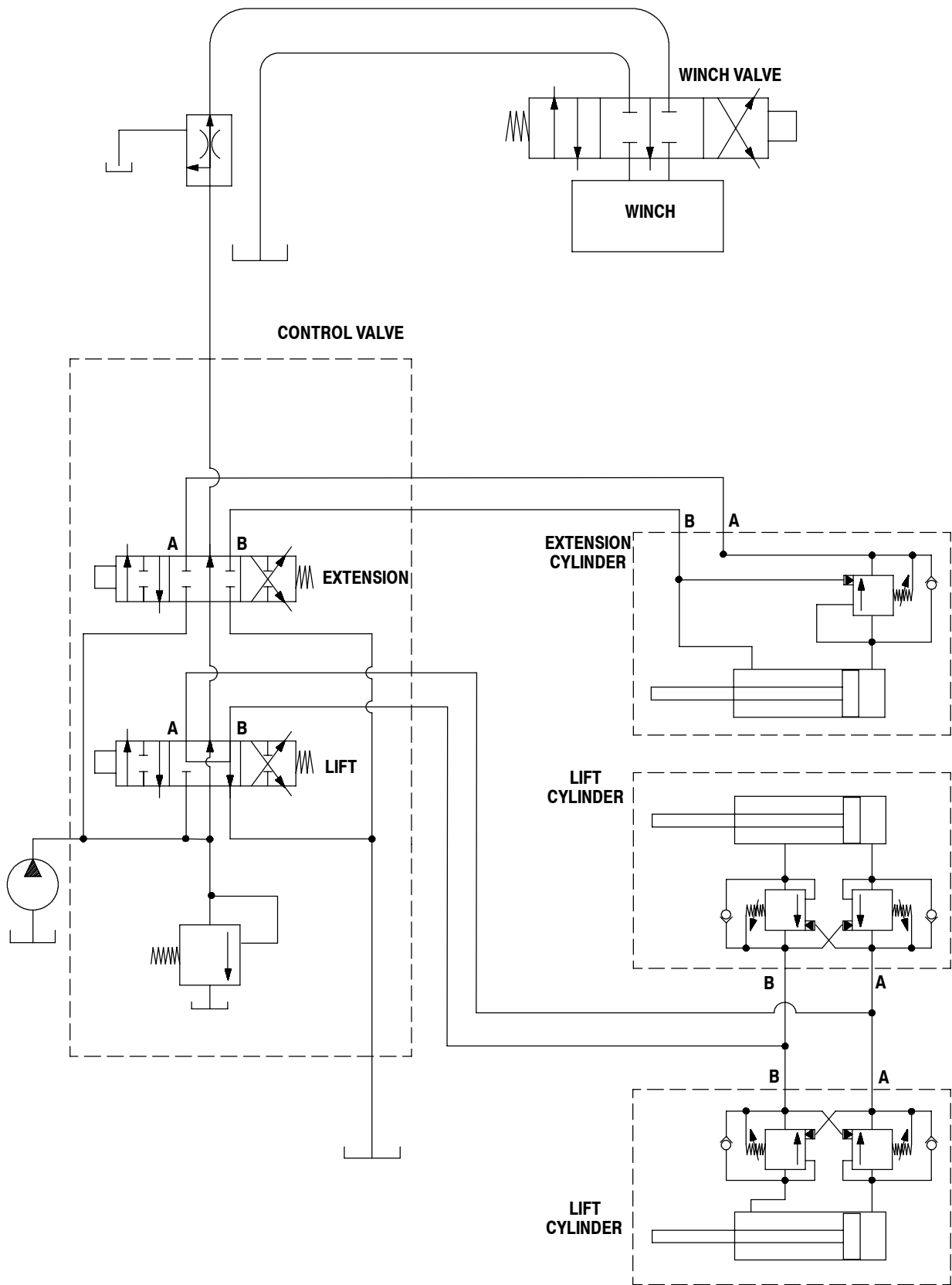
Rev.2/08
M9606-34

FOR MODELS - KP710

2/08

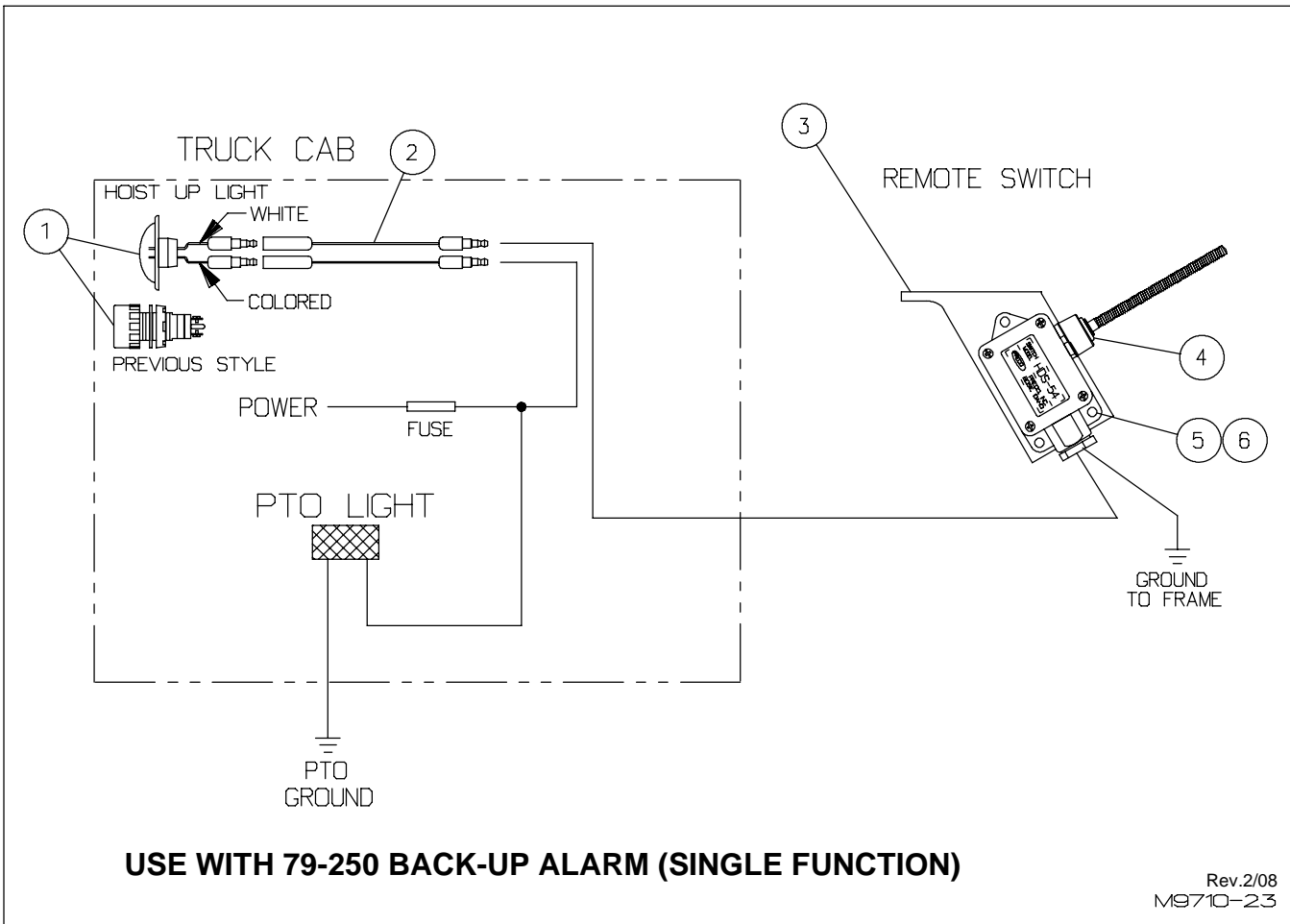
Item	Part Number	Part Description	Qty.	Item	Part Number	Part Description	Qty.
1	9606-47-0	Winch Control	1	16	63-134	3/8NC Nylon-Top Lock Nut	1
2	82-254	Knob - 1/2NC Threads	1	17	82-251	Tensioner Wire Rope Kit 10"Drum	1
3	9606-45-1	Cover Plate - Left	1	18	82-249	9,000# Winch	1
4	62-342	1/4NC x 3/4" Hex Washer Thread Cutting Screw	8	19	82-250	12,000# Winch	1
5	62-103	1/4NC x 2" GD5 Cap Screw	2	20	82-263	Remote Clutch Assembly (see pages A11-A14)	1
6	See page P3	Winch Control Valve	1	21	★ 62-432	5/16NC x 1"GD5 Cap Screw	2
7	9606-45-2	Cover Plate - Right	1	22	★ 63-167	5/16NC Nylon-Top Lock Nut	2
8	99-200	Retainer Ring - 5/8"	4	23	9606-46-0A	Bumper Shell Weldment	1
9	64-200	1"OD x 5/8"ID x 1/16" Bushing	4	24	9606-48-0	Clutch Rod Weldment	1
10	9606-45-4A	Roller	2	25	82-252	Cable w/ Hook	1
11	9606-45-6	Threaded Rod	1	★ Supplied with Clutch Control Kit			
12	53-152	Flanged Bushing 3/4"OD x 5/8"ID	4				
13	9606-45-5	Roller Pin	2				
14	82-298	Yoke Kit -5/16UNF Threads	2				
15	62-118	3/8NC x 2-1/2"GD5 Cap Screw	1				

KP710 HYDRAULIC SCHEMATIC MANUAL CONTROL VALVE



REV.10/07
M9710-1

HOIST UP LIGHT

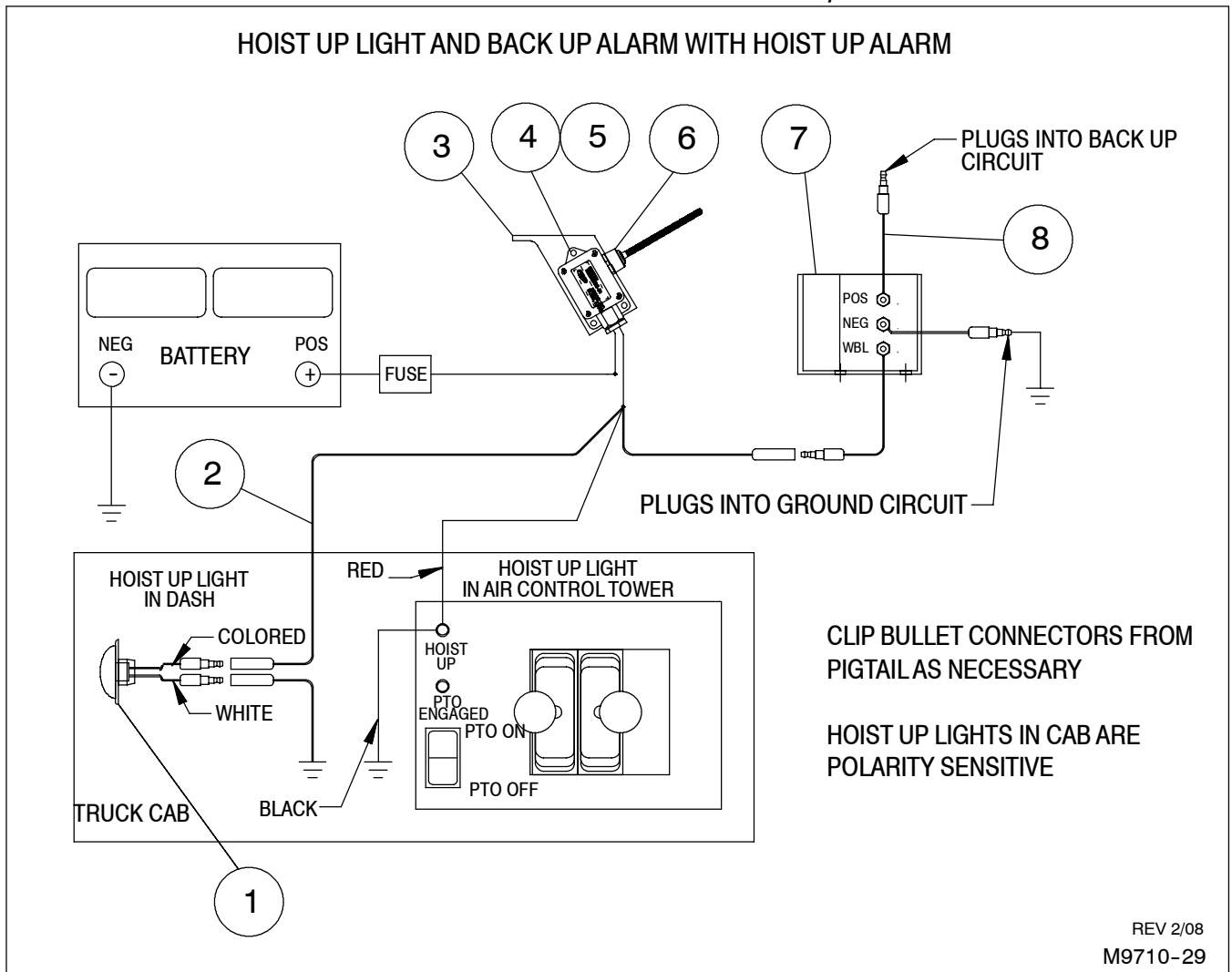


FOR MODELS - KP710

2/07

Item	Part Number	Part Description	Qty.
1	★ 79-580	Hoist Up Light (Requires 3/4" DIA Hole)	1
	79-269	Hoist Up Light (Requires 7/8" DIA Hole)	1
2	79-581	Pigtail, 16"	2
3	9716-0-30	Bracket - Safety Switch	1
4	79-248	Remote Switch	1
5	62-422	1/4NC x 1-1/4" GD5 Cap Screw	3
6	63-141	1/4NC Hex Flange Serrated Nut	3
★ Current			

HOIST UP LIGHT & BACK-UP ALARM w/ HOIST-UP ALARM

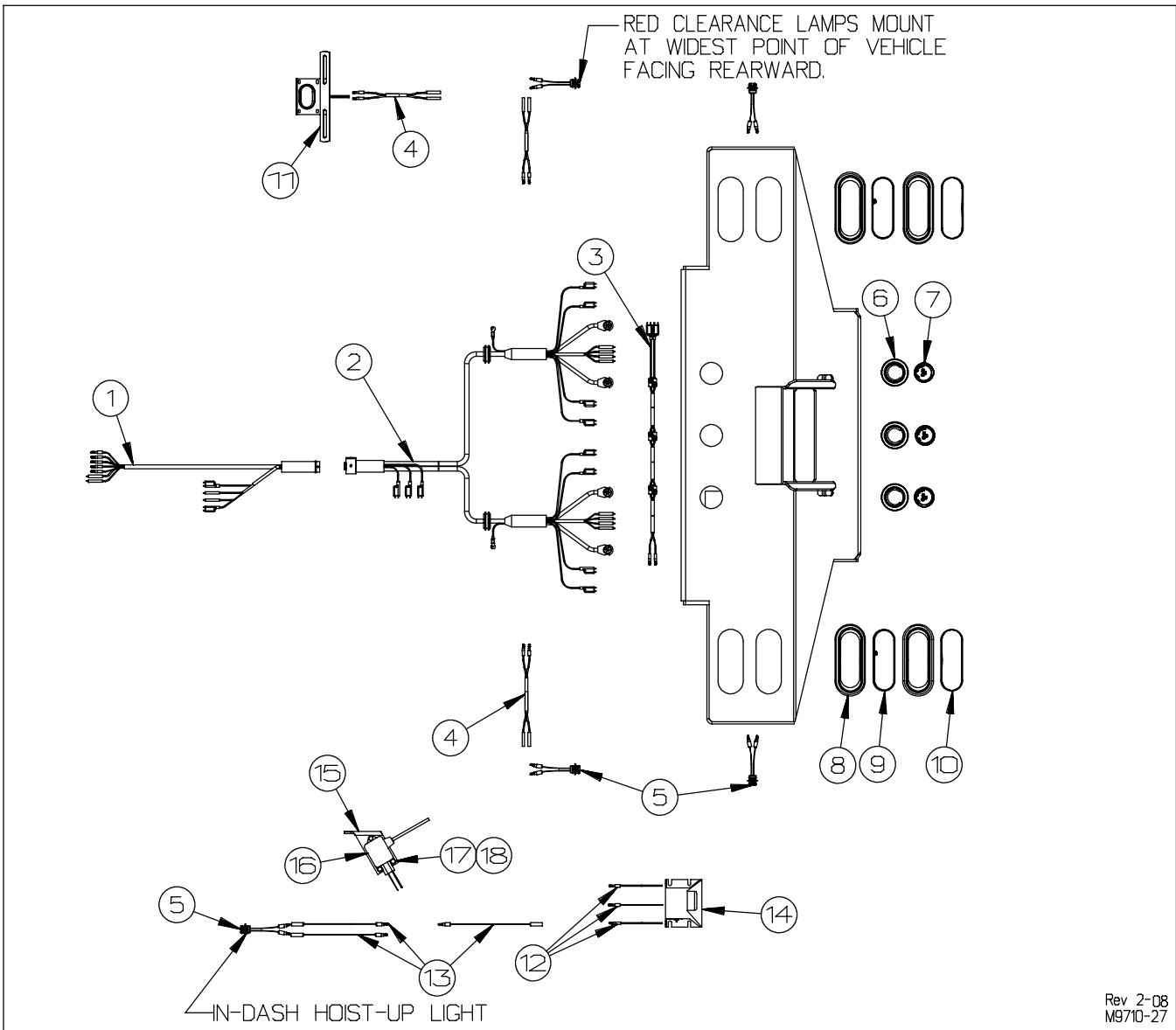


FOR MODELS - KP710

2/07

Item	Part Number	Part Description	Qty.
1	79-580	Hoist Up Light (for 3/4" DIA hole)	1
2	79-581	Pigtail, 192"	3
3	9716-0-30	Switch Mounting Plate	1
4	62-422	1/4NC x 1-1/4" GD5 Cap Screw	3
5	63-141	1/4NC Hex Flange Serrated Nut	3
6	79-248	Remote Switch	1
7	79-610	Back-Up Alarm, Dual Function	1
8	79-606	Pigtail, 21"	3

ELECTRICAL PARTS

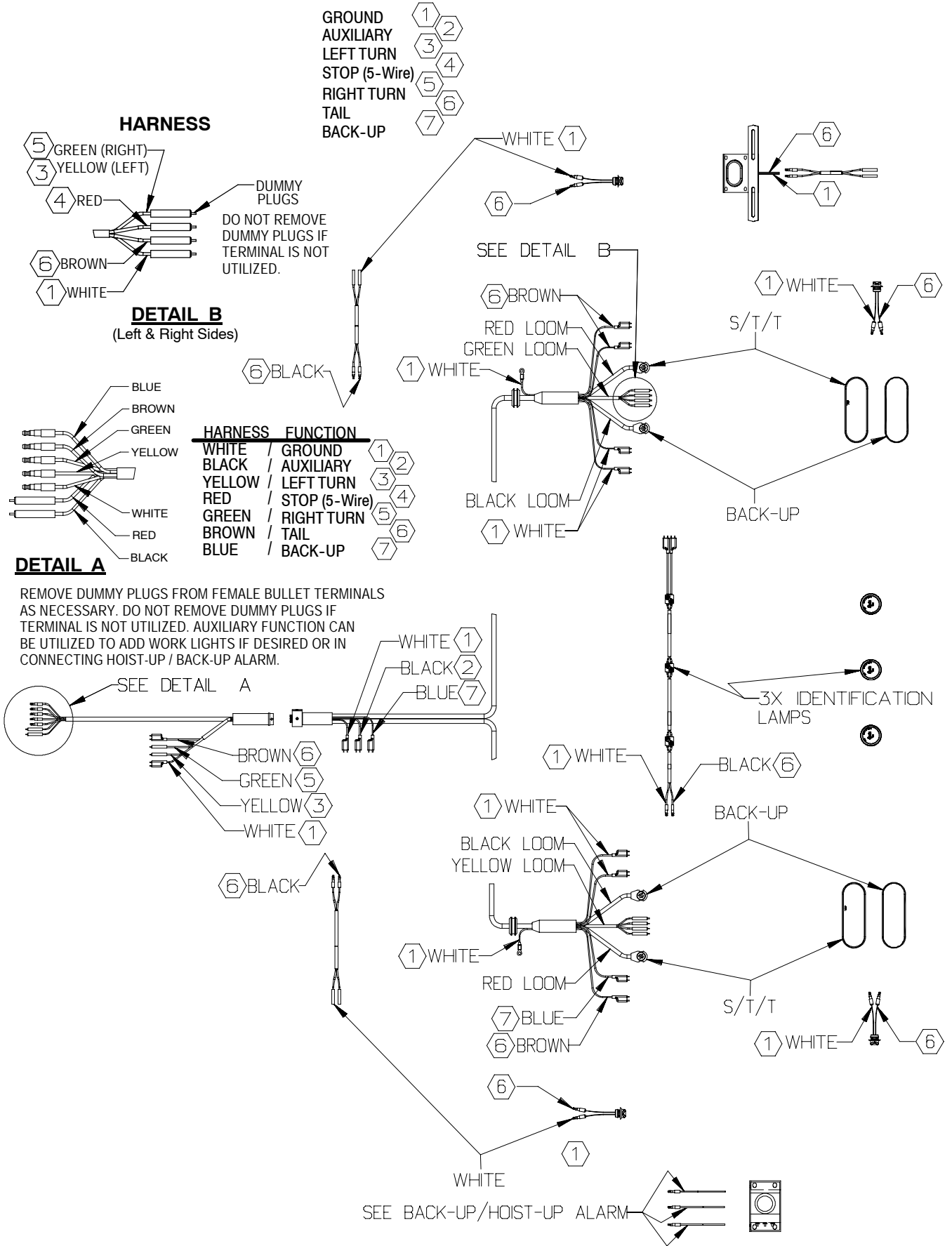


Item	Part Number	Part Description	Qty.	Bumper*
1	79-591	Main Wiring Harness	0	1
2	79-592	Rear Sill Wiring Harness	0	1
3	79-593	Rear I.D. Harness	0	1
4	79-594	2-Conductor Harness	1	3
5	79-580	LED Lamp, Red	1	5
6	79-589	Grommet, For 2" Round Lamp	0	3
7	79-584	Led Lamp, 2" Round, Red	0	3
8	79-590	Grommet, For Oval Lamp	0	4
9	79-613	LED Lamp, Oval, S/T/T	0	2
10	79-611	Back-Up Lamp, Oval	0	2
11	79-491	License Plate Bracket & Lamp	1	
12	79-606	Pigtail, 21"	3	
13	79-581	Pigtail, 192"	3	
14	79-610	Back-Up Alarm, Dual Function	1	
15	9716-0-30	Switch Mounting Plate	1	
16	79-248	Remote Switch	1	
17	62-422	1/4NC x 1-1/4" GD5 Cap Screw	3	
18	63-141	1/4NC Hex Flange Serrated Nut	3	

* Items not included with tailboard (no bumper)

ELECTRICAL SCHEMATIC (FOR DELUXE BUMPER OPTION)

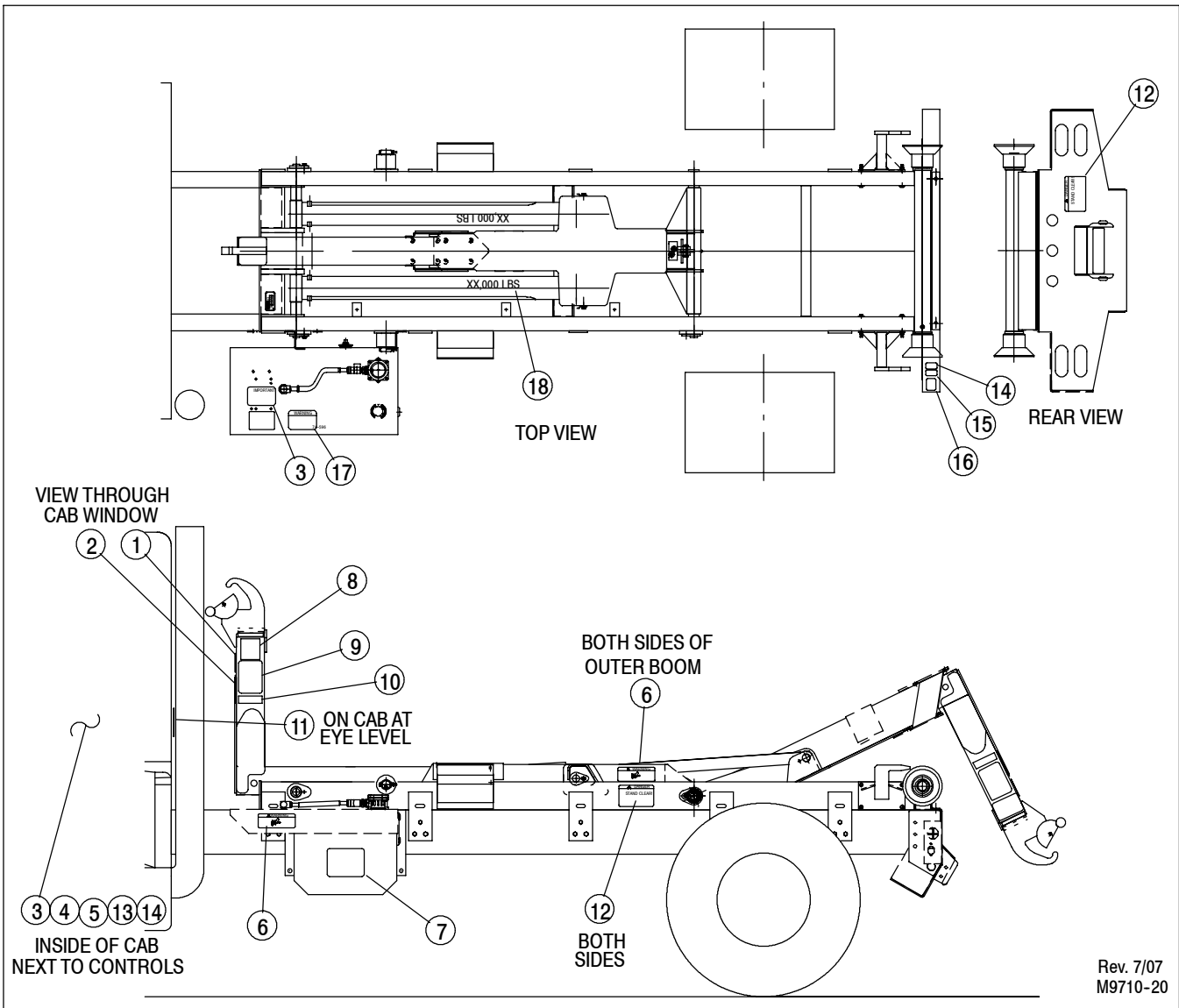
LED LAMPS ARE POLARITY SENSITIVE. IF A LAMP DOES NOT FUNCTION, SWITCH BULLET TERMINAL CONNECTIONS.



NOTE: WHEN CONNECTING HARNESSES, PIGTAILS, AND LAMPS, CONNECT PER LIKE NUMBERS SHOWN ABOVE AS WIRE COLORS MAY DIFFER (BLACK WIRE MAY CONNECT TO BROWN WIRE, ETC.)

Rev 2-08
M9710-28

DECALS



Rev. 7/07
M9710-20

FOR MODELS - KP710

10/07

Item	Part Number	Part Description	Qty.
	9710-50-0	Decal Kit (Includes ● Items Below)	
1	● 74-485	Decal - DANGER Powerlines (Hooklift)	1
2	● 74-482	Decal - CAUTION Inner Boom	1
3	● 74-478	Decal - IMPORTANT Operation Instructions	2
4	● 74-486	Decal - WARNING Align Container	1
5	● 74-297	Decal - WARNING Uneven Ground	1
6	● 74-276	Decal - WARNING Hydraulic Safety	3
7	● 74-627	Decal - Iron Man	1
8	● 74-648	Decal - Krause Trademark	2
9	● 74-490	Decal - DANGER Hook Height Must Match	1
10	● 74-512	Decal - K-Pac Patent	1
11	● 74-477	Decal - CAUTION Operate on Level	1
12	● 74-302	Decal - DANGER Stand Clear	3
13	● 74-542	Decal - Hoist Up	1
14	● 74-481	Decal - CAUTION Do Not Drive PTO	2
15	● 74-476	Decal - CAUTION Set Brake	1
16	● 74-483	Decal - Winch Instructions	1
17	● 74-596	Decal - Warning, Stand Clear	1
18	● 74-491	Decal - 20,000 Lbs.	2
	★ 74-600	Reflective Tape - Red/White (NOT SHOWN)	20 Ft.
	★ 74-601	Reflective Tape - White (NOT SHOWN)	4 Ft.

★ Specify exact quantity needed. See page A16 for suggested locations on truck frame