

MAIN FRAME ASSEMBLY

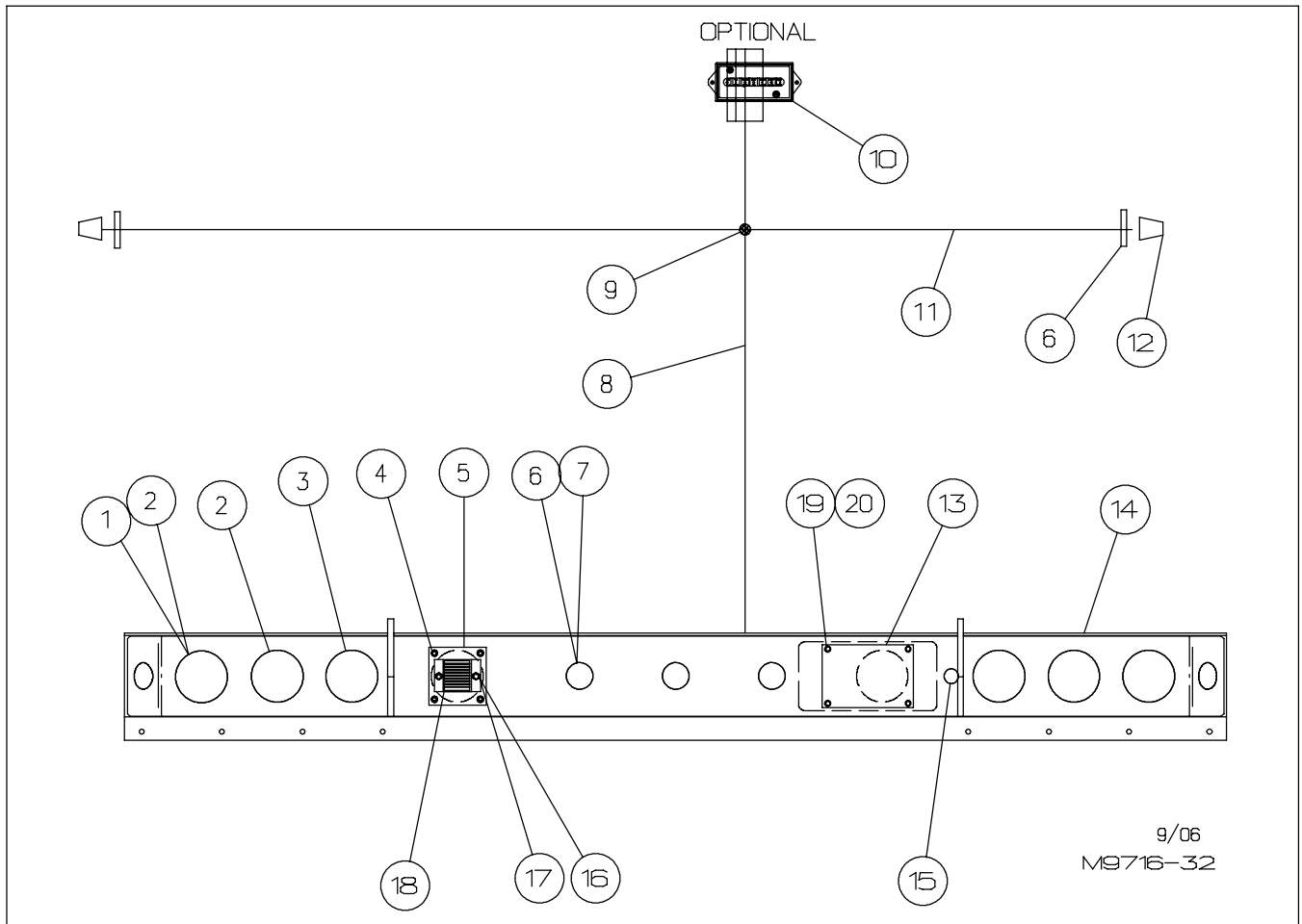
FOR MODELS - 138CA, 156CA

1/07

Item	Part Number	Part Description	Qty.	Item	Part Number	Part Description	Qty.
1	62-351	1/2NC x 4-1/2" GD5 Cap Screw	7	35	65-113	Zerk 1/4UNF	6
2	9615-00-13	Lift Cylinder Pin	4	36	9610-120-7	Cylinder Pin, Extension Cylinder	1
3	63-108	1/2NC Nylon-Top Lock Nut	8	37	99-201	Retainer Ring 1"	2
4	62-123	3/8NC x 3-1/2" GD5 Cap Screw	4	38	9606-108-8	Roller Shaft	1
5	65-101	1/8" STD. Zerk	4	39	9606-105-0	Guide Roller Assembly	2
6	9274-415-3	Bolt Collar (Roller)	4	40	9606-108-10	Special Bolt	2
7	63-134	3/8NC Nylon-Top Lock Nut	4	41	64-109	5/8" STD. Lock Washer	2
8	64-154	Machine Bushing	4	42	9606-108-9	Retainer Washer	2
9	9274-412-0	Outside Roller Assembly	4	43	64-199	3 x 2 x 10 Ga. Machine Bushing	6
10	9716-0-3	Outer Boom Pivot Pin	2	44	* 62-803	3/8NC x 7/8" GD5 Cap Screw	8
11	9716-0-14	Prop	2	45	* 64-103	3/8" STD. Lock Washer	8
12	62-547	1/2NC x 6-1/2" GD5 Cap Screw	2	46	* 64-165	3/8" SAE Flat Washer	8
13	62-569	1/2NC x 1-1/2" GD5 Cap Screw	2	47	* 9610-00-3	Shim .06 (Pad Retainer)	2
14	9716-240-0	Hold Down Weldment, Right	1	48	* 9610-00-4	Shim .12 (Pad Retainer)	2
15	9716-27-0	Main Pivot Shaft Weldment	1	49	* 9710-0-9	Pad Retainer	2
16	64-108	1/2" STD. Flat Washer	9	50	* 9610-120-2A	Outer Boom Pad	2
17	9716-241-0	Hold Down Weldment, Left	1	51	60-109	P.T.O. Lock Pin	2
18	62-462	1/2NC x 3-1/4" GD5 Cap Screw	8	52	9716-438-0	Outer Boom Weldment	1
19	63-107	1/2NC Lock Nut	8	53	23-721	Hydraulic Cylinder, 3" x 35"	1
20	99-197	Retainer Ring 1-1/4"	2	54	23-722	Hydraulic Cylinder, 3" x 48"	1
21	9716-00-12	Rod Pin, Extension Cylinder	1	55	9716-238-0	Tilt Frame Weldment (138)	1
22	60-701	5/32" DIA. x 1-1/4" Cotter Pin	1	56	9716-256-0	Tilt Frame Weldment (156)	1
23	9716-355-0	Hook Lock Weldment	1	57	9615-303-0	Main Pin Weldment	1
24	64-146	5/8" SAE Flat Washer	2	58	9716-301-0	Lock Plate Weldment, Left	1
25	60-272	5/8" DIA. x 3-1/2" Clevis Pin	1	59	76-218	Spring, 1" OD x .125"W x 3.00"L	1
26	23-707	Hydraulic Cylinder 6" x 55-1/2"	2	60	9615-00-6	Spring Retainer	1
27	82-242	Shock Pad	1	61	63-167	5/16NC Nylon-Top Lock Nut	2
28	64-162	1/2" SAE Flat Washer	1	62	9716-302-0	Lock Plate Weldment, Right	1
29	9716-354-0	KP716 54" Inner Boom (138/156)	1	63	9615-304-0	Lock Pin Weldment	2
30	9716-362-0	KP716 62" Inner Boom (138/156)	1	64	62-432	5/16NC x 1" GD5 Cap Screw	2
31	* 62-764	3/8NC x 3/4" Flat Head Countersunk Allen Screw	4	65	76-180	Spring (painted)	2
32	* 9610-120-5A	Inner Boom Pad (Large)	2	66	9716-638-0	Main Frame Weldment	1
33	* 9610-00-10	Shim	2	67	99-158	Loctite (250ml)	
34	* 9610-00-14	Shim	2	68	5210-563-3	Coupler	1
				* Item included in 9716-84-0 Pad & Shim Kit			

This page intentionally left blank.

LIGHTED BUMPER PARTS



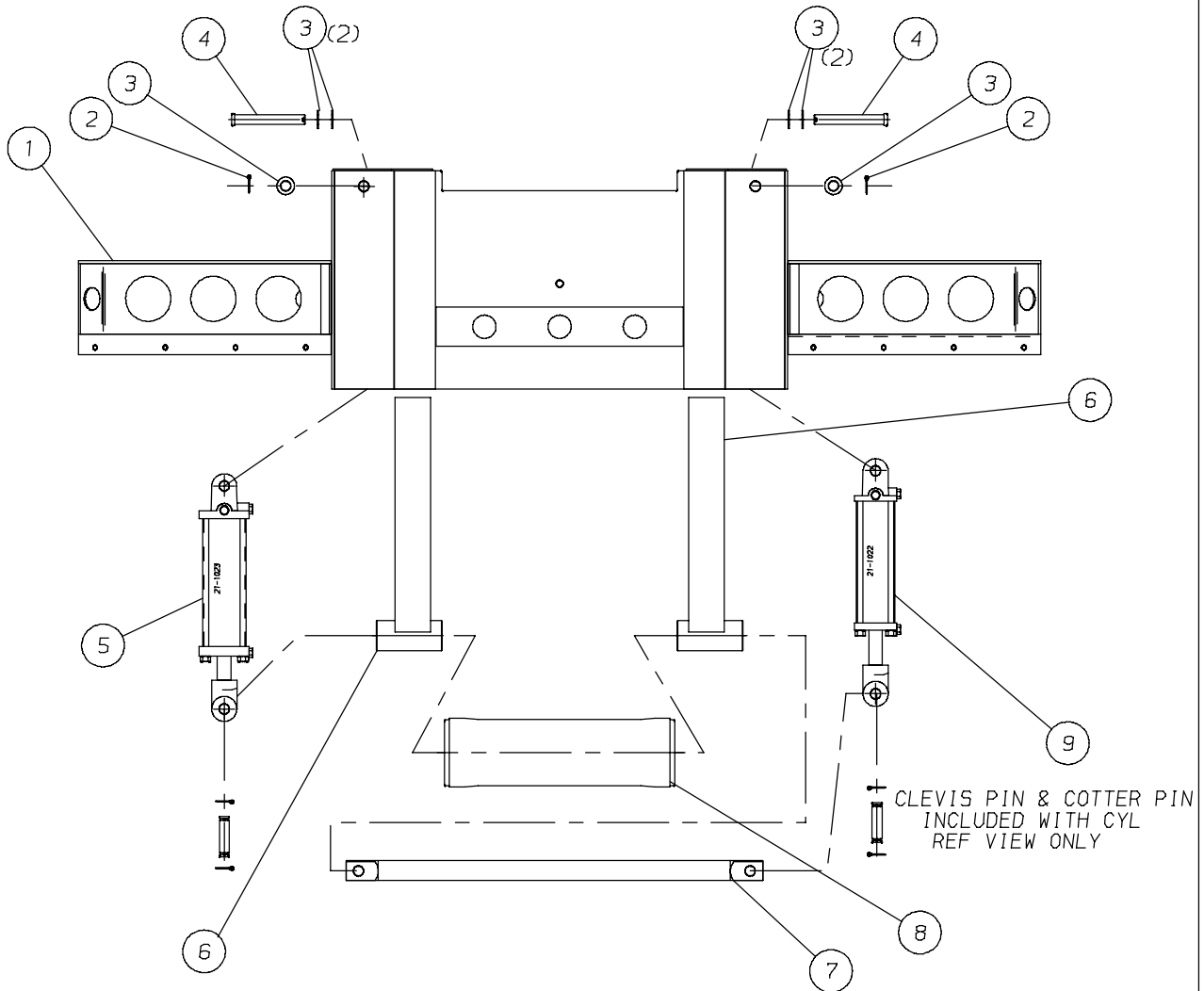
9/06
M9716-32

FOR MODELS - KP816

1/07

Item	Part Number	Part Description	Qty.
1	79-237	4.25" Dia Rubber Grommet	6
2	79-234	Lamp - Stop/Tail/Turn	4
3	79-233	Lamp - Back-up	2
4	62-425	3/8NC x 3/4" GD8 Hex Washer Thread Forming Screw	4
5	9274-0-461	Bumper Cover	1
6	79-236	2" Dia. Rubber Grommet	7
7	79-235	Lamp - 2" Dia. Clearance (Red)	5
8	79-253	Wiring Harness, Rear Bumper	1
9	79-293	Splice Connector 14 Ga to 18 Ga	4
10	79-509	Junction Box (Option)	1
11	79-294	Wiring Harness - 30"	2
12	79-296	Beehive Light - 2" Dia. Sealed	2
13	9274-0-451	Cover Plate	1
14	9274-546-0	Bumper Weldment	1
15	79-254	Lamp - LPL Courtesy	1
16	62-362	5/16NC x 3/4" Cap Screw	2
17	63-139	5/16NC Lock Nut	2
18	79-250	Back-Up Alarm	1
19	82-340	Grommet Nut, 1/4"	4
20	62-701	1/4NC x 1" Hex Washer Thread Forming Screw	4

STABILIZER



IMPORTANT:

STABILIZER CYLINDER MUST BE RUN AND CYCLED SEVERAL TIMES TO GET THEM IN PHASE BEFORE HOOKING TO ROLLER SHAFT. DAMAGE CAN OCCUR TO SHAFT IF THIS IS NOT DONE.

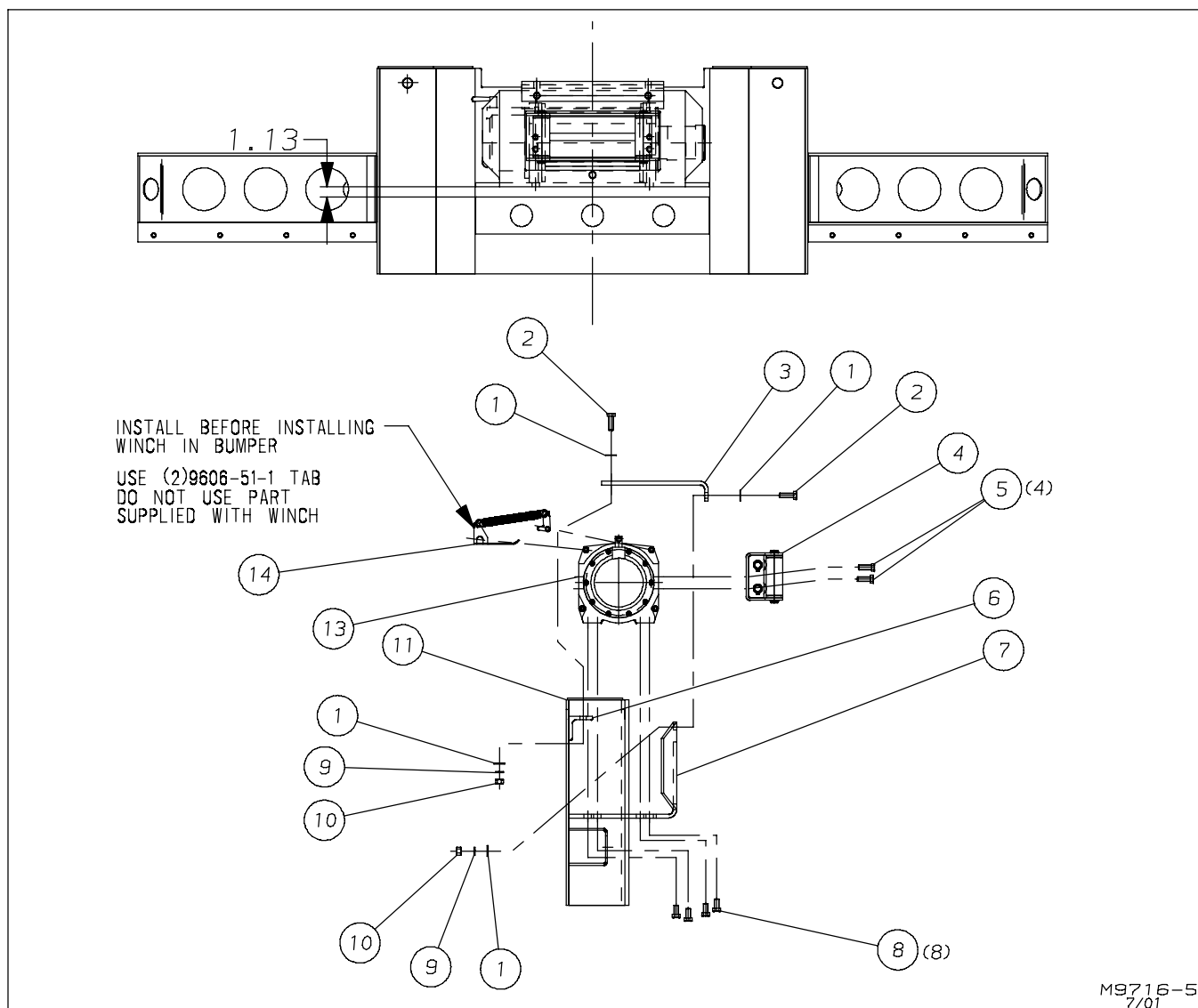
M9716-4
7/01

FOR MODELS -

1/07

Item	Part Number	Part Description	Qty.
1	9716-850-0	Stabilizer Main Weldment	1
2	★	3/16" DIA. x 1-3/4" Cotter Pin	2
3	64-119	1" STD. Flat Washer	6
4	60-271	Clevis Pin	2
5	21-1023	3-3/4" x 10" Ret/Series Hydraulic Cylinder	1
6	9716-855-0	Stabilizer Slide Weldment	2
7	9716-0-1	Stabilizer Roller Shaft	1
8	9274-26-0A	Rear Roller Assembly	1
9	21-1022	3-1/2" x 10" Ret/Series Hydraulic Cylinder	
★ Included in cylinder assembly see pages P28 and P29			

WINCH

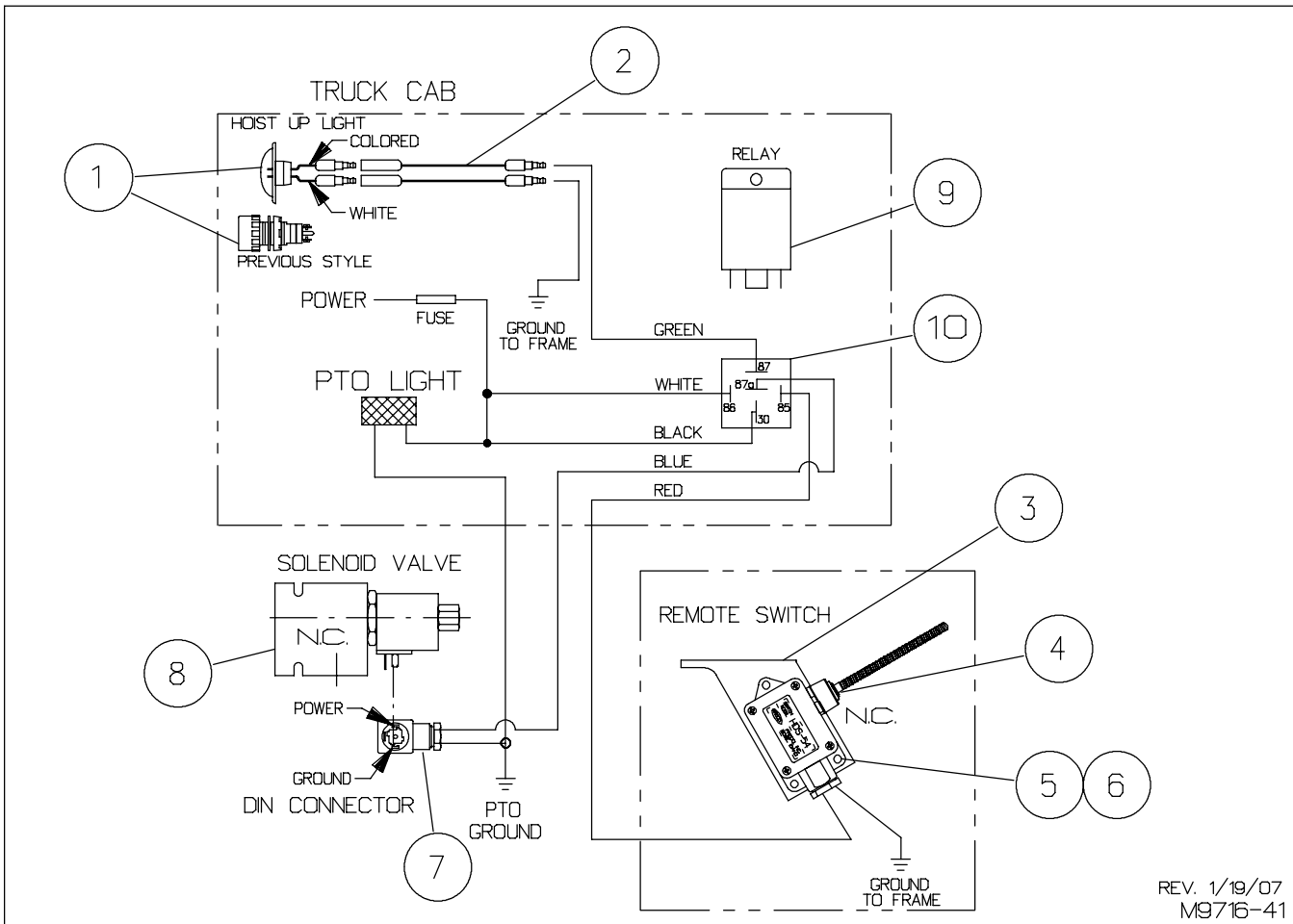


FOR MODELS -

1/07

Item	Part Number	Part Description	Qty.
1	64-108	1/2" STD. Flat Washer	8
2	62-569	1/2NC x 1-1/2" GD5 Cap Screw	4
3	9716-860-2	Winch Cover Plate	1
4	82-295	Hd. Roller Fairlead for 10" Drum	1
5	62-805	M12 x 1.75 x 35 x 8.8 Cap Screw	4
6	9625-0-18	Angle - Winch Cover	1
7	9716-860-1	Winch Mount / Cover	1
8	62-815	M12 x 1.75 x 25 x 8.8 Cap Screw	8
9	64-107	1/2" STD. Lock Washer	4
10	63-106	1/2NC Hex Nut	4
11	9716-850-0	Stabilizer Main Weldment	1
12			
13	82-250	12,000# Winch (30-286 Series)	1
14	82-251	Tensioner Wire Rope Kit 10" Drum	1

MISCELLANEOUS ELECTRICAL PARTS



FOR MODELS - KP816

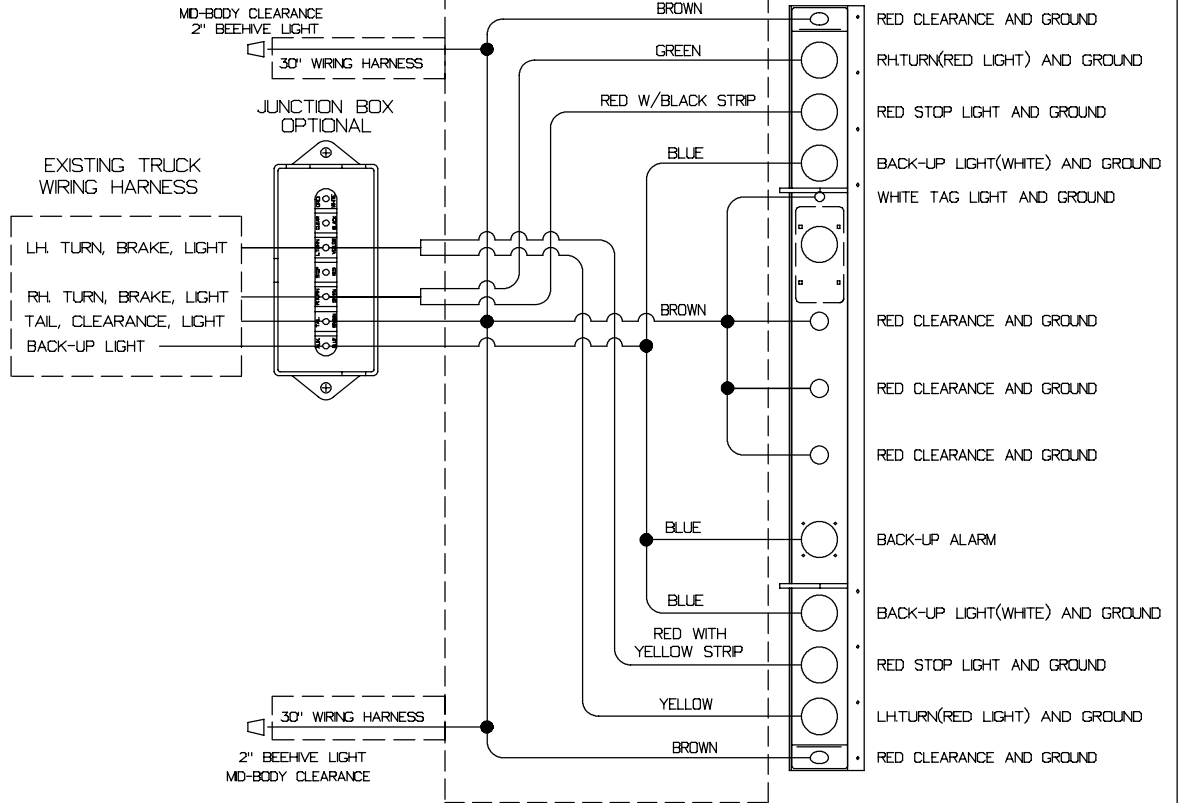
2/07

Item	Part Number	Part Description	Qty.
1	79-580	Hoist Up Light. LED (requires 3/4" DIA. hole)	1
	79-269	Hoist Up Light (requires 7/8" DIA. hole)	1
2	79-581	Pigtail - 16 Ft.	2
3	9716-0-30	Bracket - Safety Switch	1
4	79-248	Remote Switch	1
5	62-422	1/4NC x 1-1/2" GD5 Cap Screw	3
6	63-141	1/4NC Hex Flange Serrated Nut	3
7	79-496	Din Plug	1
8	79-563	Solenoid Valve (40 GPM)	1
9	79-564	12V Relay 30 Amp	1
10	79-565	12V Relay Connector w/ Wire	1

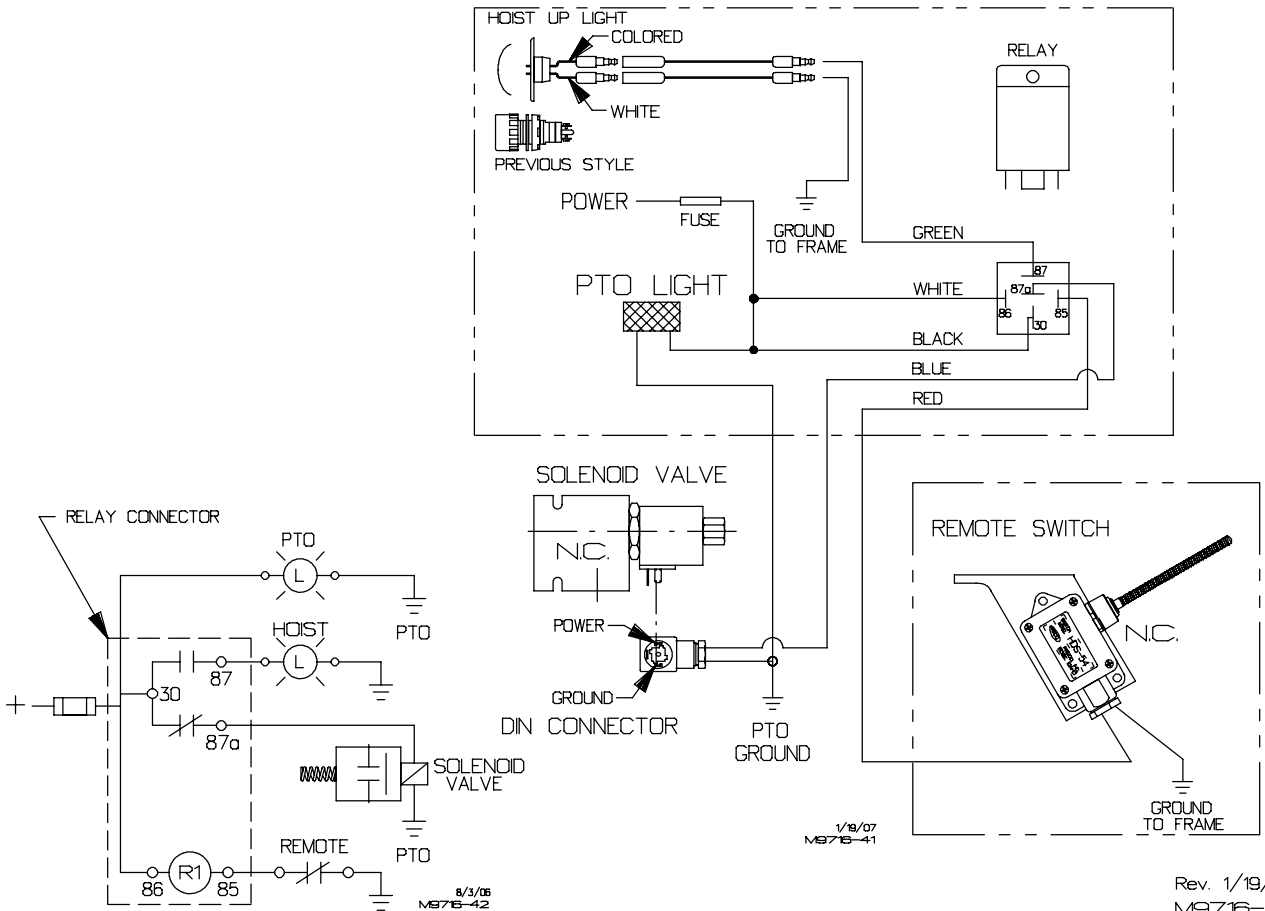
ELECTRICAL SCHEMATIC

1 GROUND WHITE WIRES TO BUMPER

WIRING HARNESS SUPPLIED

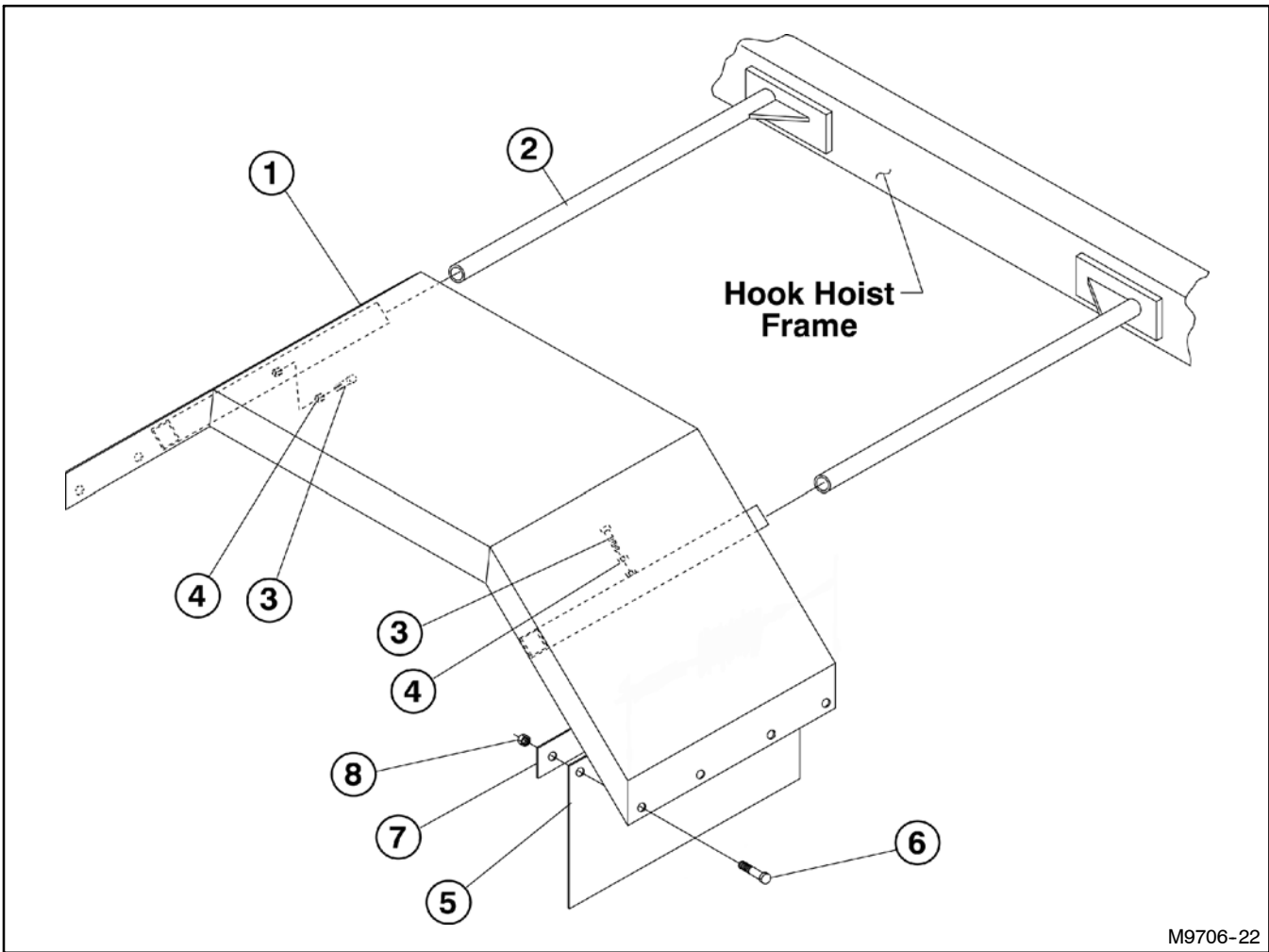


TRUCK CAB



Rev. 1/19/07
M976-37

SINGLE STEEL FENDERS



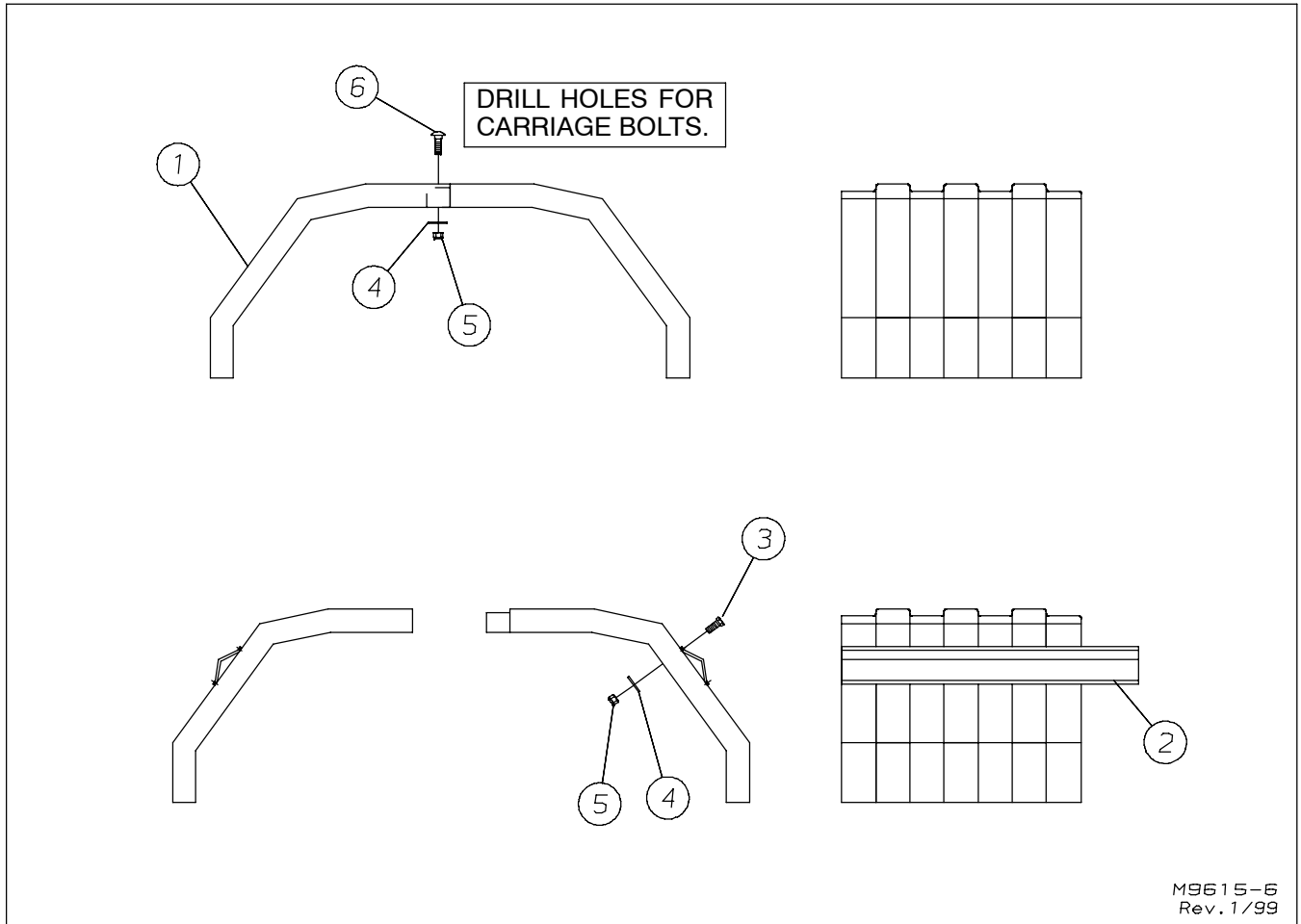
M9706-22

FOR MODELS - ALL

1/07

Item	Part Number	Part Description	Qty.
1	9305-55-0A	Standard Fender Weldment - (Width = 25-1/2")	1
	9305-57-0A	Narrow Fender Weldment - (Width = 22-1/4")	1
2	9305-56-0	Fender Support Weldment	2
3	62-503	1/2NC x 1-1/2" Set Screw	2
4	63-106	1/2NC Hex Nut	2
5	44-220	Mud Flap	1
6	62-108	3/8NC x 1" GD.5 Cap Screw	4
7	9274-0-1	Mud Flap Backing Plate	1
8	63-134	3/8NC Self Locking Nut	4

SINGLE POLY FENDERS



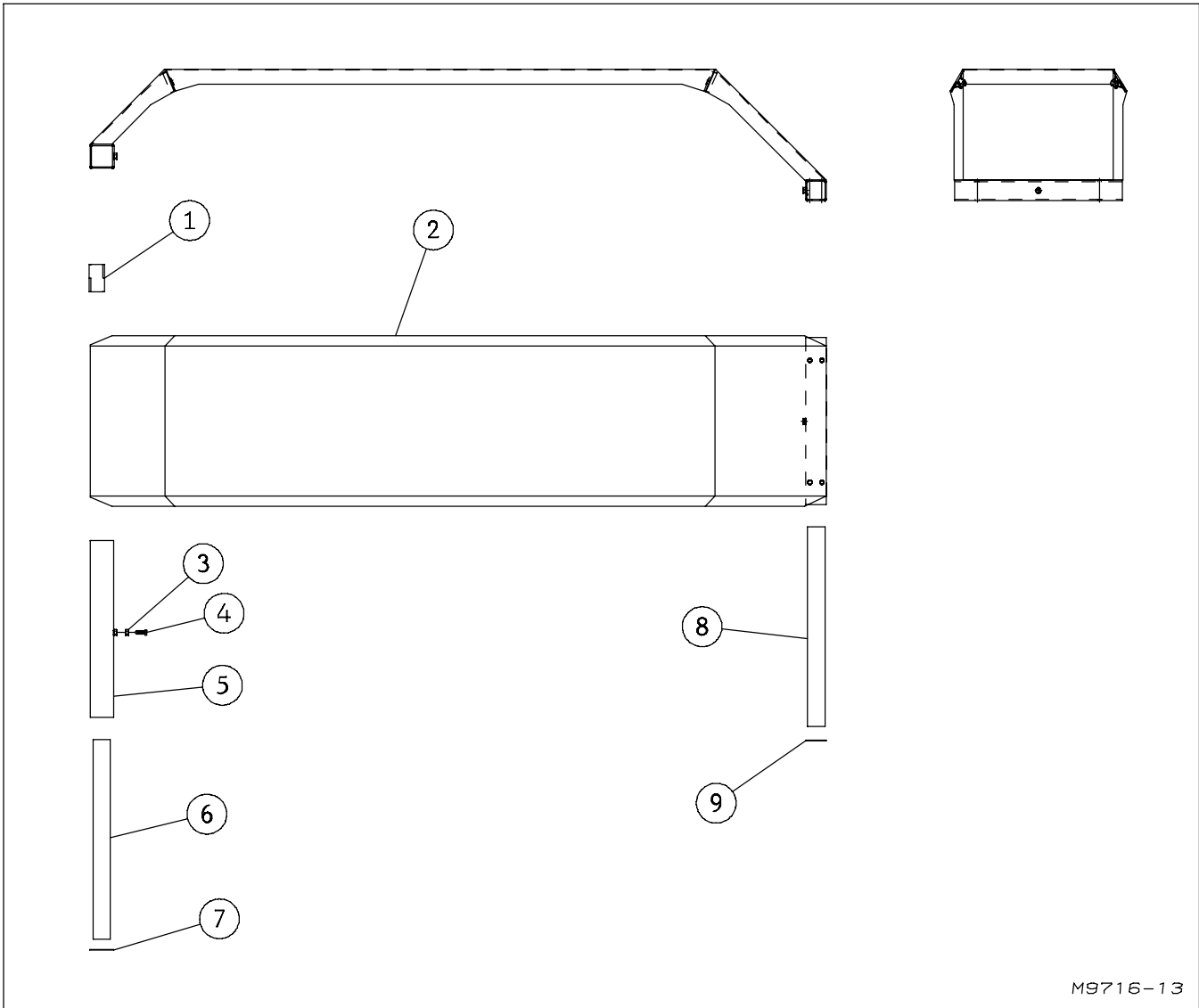
M9615-6
Rev. 1/99

FOR MODELS - KP816

1/99

Item	Part Number	Part Description	Qty.
1	44-190	Poly Fender Kit Single Axle 26"	1
2	82-255	Mounting Kit for 44-190	1
3	★	5/16NC x 1" Hex Head Cap Screw	16
4	★	5/16" STD. Flat Washer	23
5	★	5/16NC Nylon-Top Lock Nut	23
6	★	5/16NC x 1-1/4 Carriage Bolt	7
★ Items Included in Mounting Kit			

TANDEM STEEL FENDERS



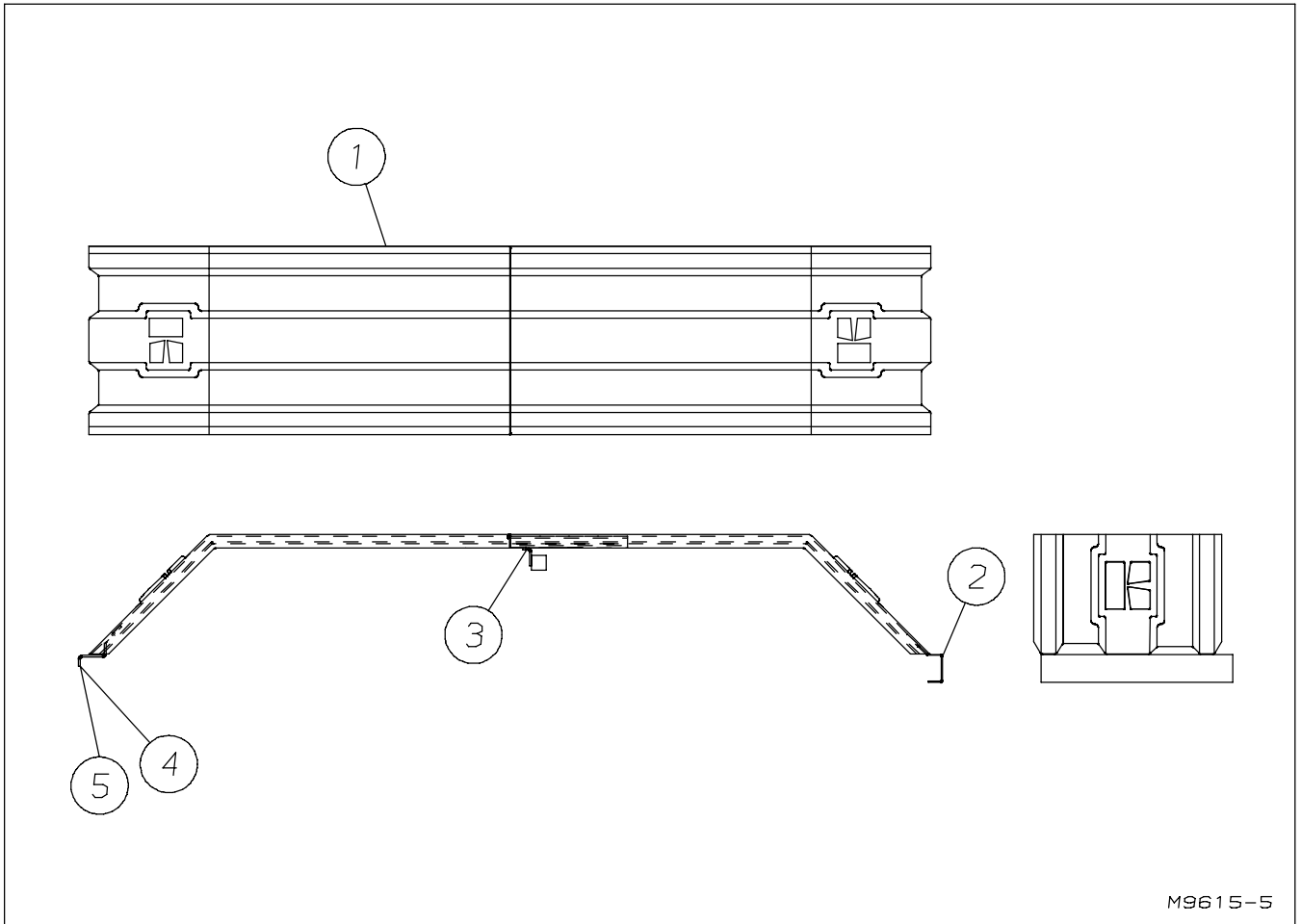
M9716-13

FOR MODELS - KP816

2/02

Item	Part Number	Part Description	Qty.
1	9274-0-3501	Gusset	4
2	9274-159-0	Fender Weldment (102" Max)	2
3	63-106	1/2NC Hex Nut	4
4	62-503	1/2NC x 1-1/2" Square Head Cone Point Set Screw	4
5	9274-148-0	Front Fender Tube Weldment	2
6	9625-0-8	Front Fender Mounting Tube	2
7	9274-162-1	End Cap w/ Hole	2
8	9625-0-7	Rear Fender Mounting Tube	2
9	9274-50-6	End Cap	2

TANDEM POLY FENDERS



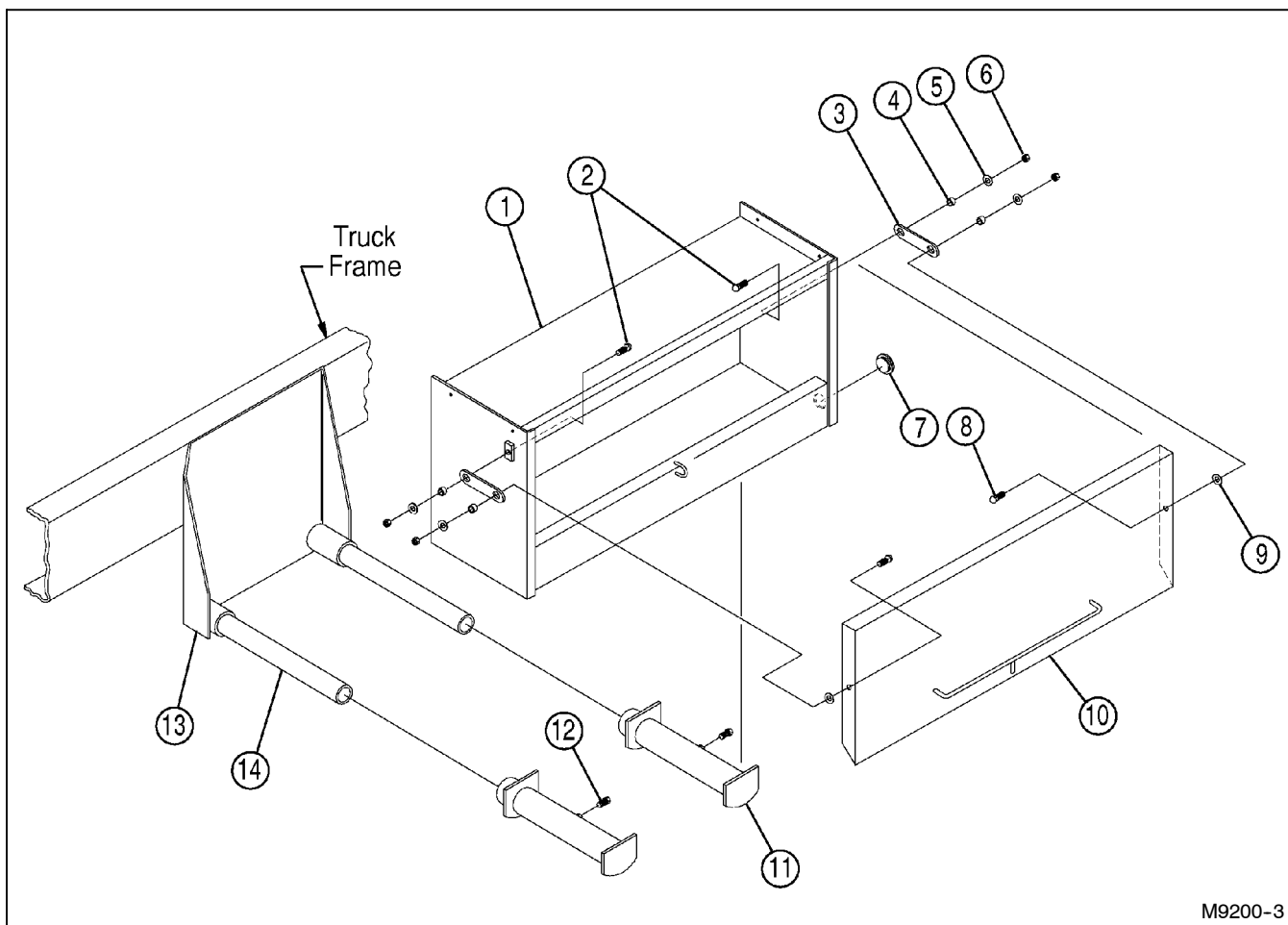
M9615-5

FOR MODELS - KP816

7/97

<i>Item</i>	<i>Part Number</i>	<i>Part Description</i>	<i>Qty.</i>
1	44-133	Dual Poly Fender	4
2	9274-115-1A	Rear Fender Mount	2
3	9274-115-8	Center Fender Mount	2
4	9274-115-5	Front Fender Brace - Left	1
5	9274-115-6	Front Fender Brace - Right	1

TOOL BOX

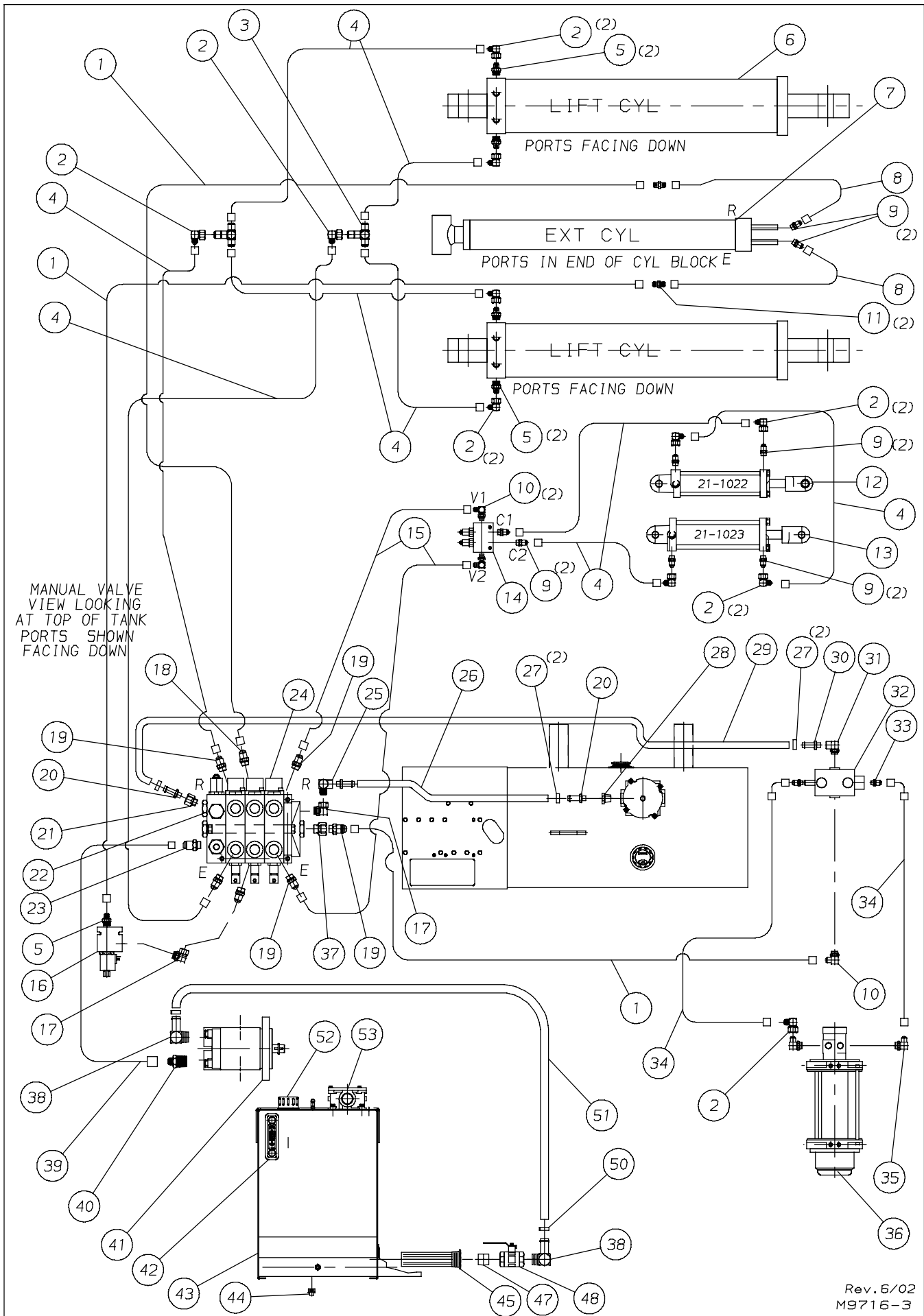


M9200-3

FOR MODELS - ALL

1/07

Item	Part Number	Part Description	Qty.
	9274-110-0	Tool Box & Platform Assembly	1
1	9274-36-0	Tool Box Weldment	1
2	62-139	1/2NC x 1-3/4" Carriage Bolt	2
3	9274-35-1	Hinge Strap	2
4	53-126	Wear Sleeve	4
5	64-108	1/2" STD. Flat Washer	4
6	63-107	1/2NC Self Locking Nut	4
7	75-109	Plastic Plug	1
8	62-598	1/2NC x 1-1/2"GD5 Round Head Square Neck Bolt	2
9	64-110	5/8" STD. Flat Washer	2
10	9274-37-0	Tool Box Lid Weldment	1
11	9274-48-0	Tool Box Rack	2
12	62-300	1/2NC x 1" GD5 Cap Screw	2
13	9244-59-0	Tank Mounting Weldment	2
14	9274-45-1	Pipe	2

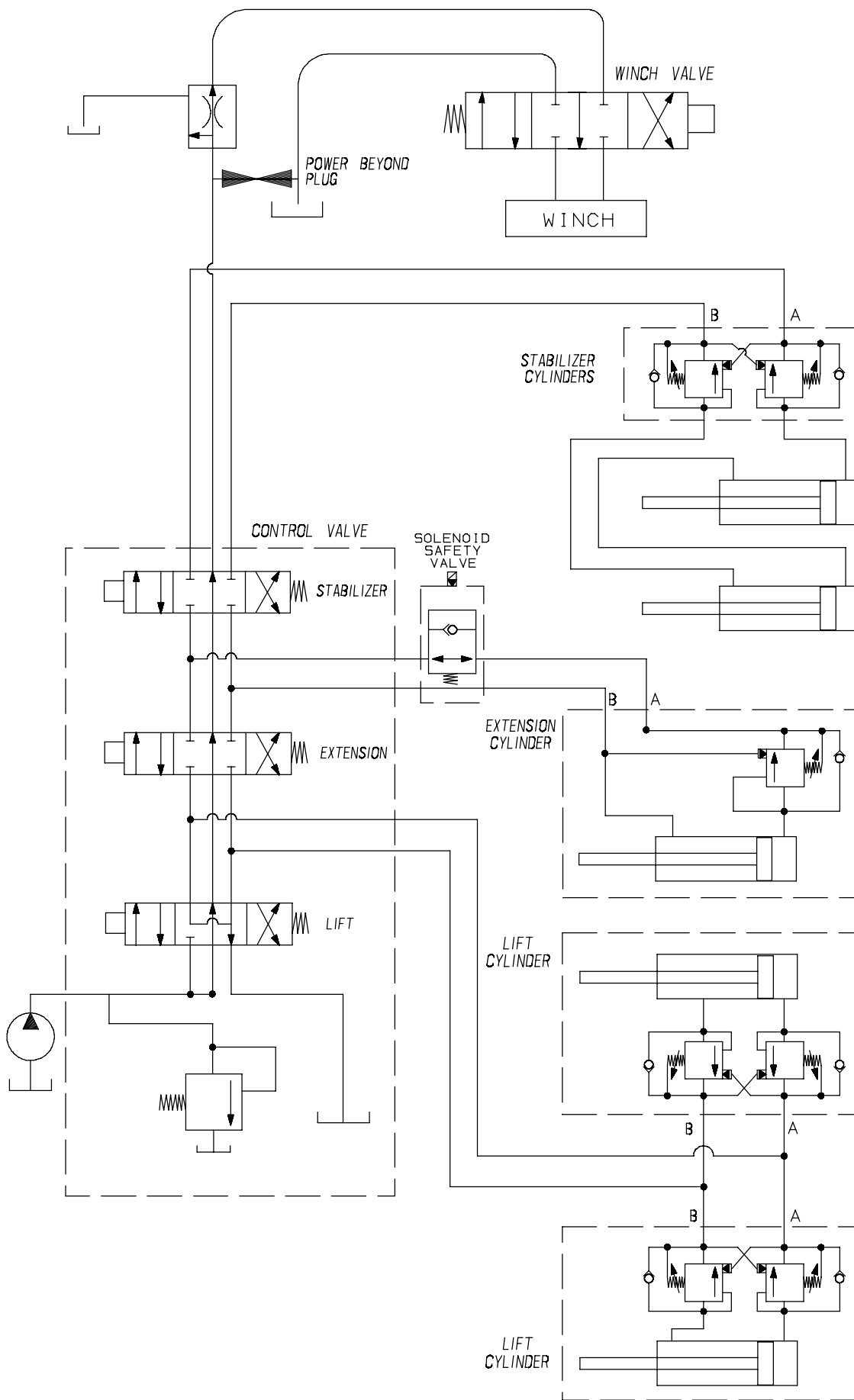


HYDRAULICS (KP816)

1/07

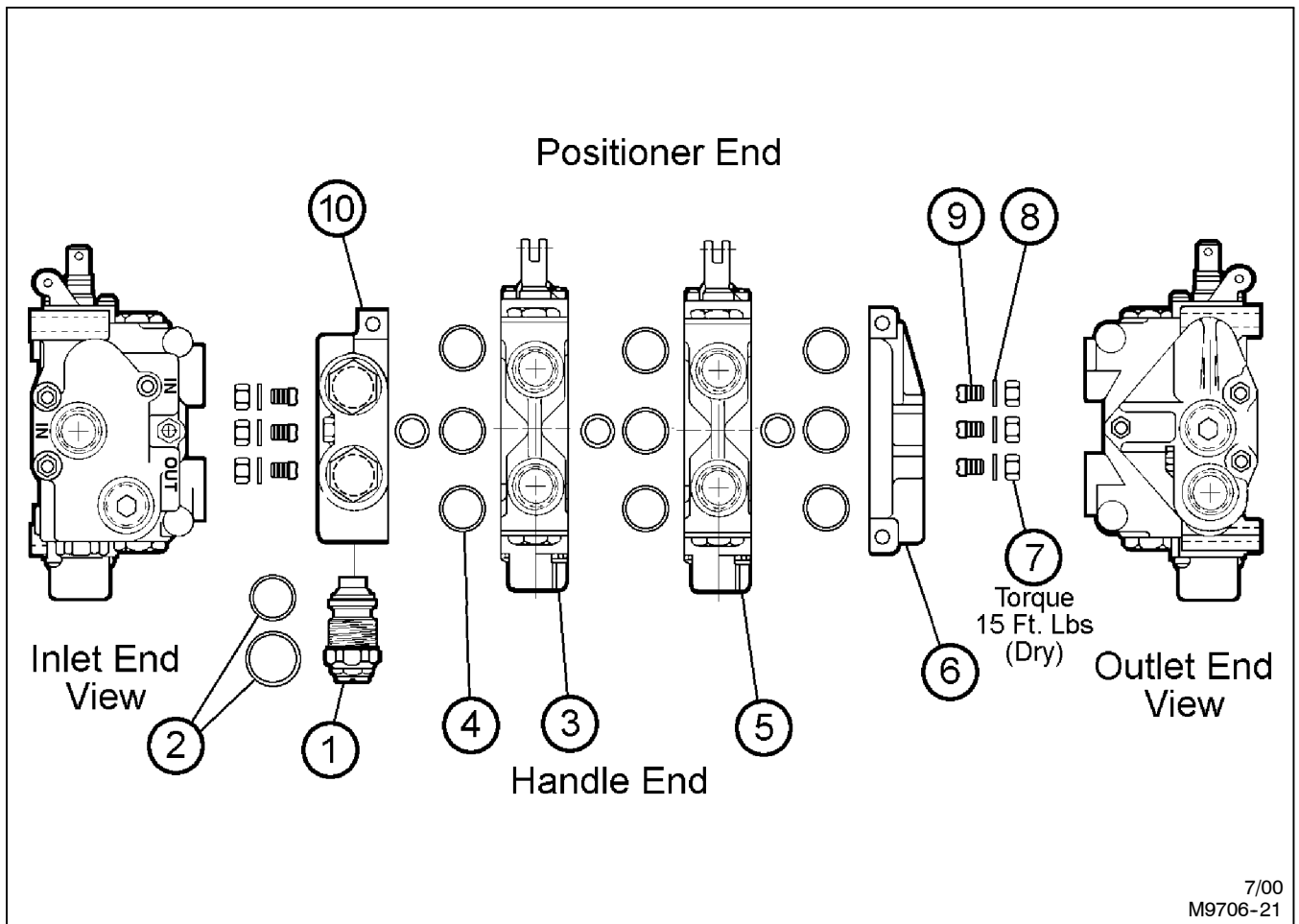
Item	Part Number	Part Description	Qty.
1	24-363R	1/2" x 284" (JIC) Black 2W Hose Assembly	2/1●
2	25-310	3/4(M)JIC to 3/4(F)JIC Swivel Hydraulic Fitting	10/1●
3	25-326	37 (M) Bulkhead Tee Hydraulic Fitting	2
4	24-387R	1/2 x 56" (JIC) Black 2W Hose Assembly	6/3★
5	25-363	1-1/16 O-Ring to 3/4JIC (M/M) Hydraulic Fitting	5
6	23-707	6" x 55-1/2" Hydraulic Cylinder	2
7	23-722	3" x 48" Hydraulic Cylinder	1
	23-721	3" x 35" Hydraulic Cylinder	1
8	24-3036	1/2" x 30" JIC w/ SL Hose Assembly	2
9	25-300	3/4(M) O-Ring to 3/4(M) JIC Adapter Hydraulic Fitting	2/6★
10	25-301	O-Ring 37° Flare 90° Ell Hydraulic Fitting	★2/1●
11	25-304	37° Flare Male coupler Hydraulic Fitting	2
12	★ 21-1022	3-1/2" x 10" Ret/Series Hydraulic Cylinder	1
13	★ 21-1023	3-3/4" x 10" Ret/Series Hydraulic Cylinder	1
14	★ 25-2496	Dual Counterbalance Valve	1
15	★ 24-373R	1/2" x 190" (JIC) Hydraulic Hose Assembly	2
16	79-563	Solenoid Valve - N.C. (40 GPM)	1
17	25-583	1-1/16 O-Ring to 1-1/16JIC 90° Hydraulic Fitting	2
18	25-478	7/8(M) O-Ring to 1-1/16(M) Straight Hydraulic Fitting	1
19	25-379	7/8(M) O-Ring to 3/4(M) JIC Adapter Hydraulic Fitting	★2/1●
20	25-1175	3/4NPT(M) to 3/4 Hose Straight Hydraulic Fitting	2/1●
21	● 25-448	1-1/16(M) O-Ring to 3/4NPT(F) Hydraulic Fitting	1
22	25-2495	2 Spool Control Valve (Reversed w/ Free Flow Spool)	1
23	25-342	1-1/16 O-Ring to 1-1/16 JIC Hydraulic Fitting	1
24	25-2502	4-Way 3-Position (Rev V20) Valve Section	1
25	25-449	1-1/16(M) to 3/4NPT(F) 90 Hydraulic Fitting	1
26	24-1151	3/4 x 20" Low Pressure Hose	1
27	25-494	Hose Clamp (1-3/16" to 1-3/8")	2/2●
28	25-1182	1-1/2NPT(M) to 3/4NPT(F) Hex Reducer Fitting	1
29	● 24-1150	3/4" x 276" Low Pressure Hose	1
30	● 25-1180	1/2NPT(M) to 3/4 Hose End Hydraulic Fitting	1
31	● 25-493	3/4(M)O-Ring to 1/2NPT(F) 90° Hydraulic Fitting	1
32	● 25-2394	Valve, SD4-1 (SV) - 2BLSD-SAE	1
33	● 25-328	9/16(M) O-Ring to 3/4(M) JIC Hydraulic Fitting	2
34	● 24-3042	1/2 x 80 (JIC) 90° 3000 PSI Hose Assembly	2
35	● 25-485	3/4(M) JIC to 7/8(M) O-Ring 90° Hydraulic Fitting	2
36	● SEE PG P7	Winch	
37	● 25-2419	Power Beyond Sleeve SAE #10 (V20 Valve)	1
38	25-170	1-1/4NPT to 1/1/4 Hose 90° Hydraulic Fitting	2
39	24-609	3/4" x 96" (JIC) w/MTL Mega 3000 Hose Assembly	1
40	25-531	1-1/16(M) JIC to 1-1/4NPT (M) Hydraulic Fitting	1
41	25-2402	31 GPM Pump (615)	1
42	25-235	Sight Gauge w/Temp 5"	1
43	9244-30-0A	Hydraulic Tank Weldment	1
44	25-2374	3/4NPT Magnetic Plug	1
45	25-233	Oil Strainer - 25 GPM	1
46			
47	75-141	1-1/4NPT Close Nipple Hydraulic Fitting	1
48	25-2387	1-1/4NPT(F) x 1-1/4NPT Ball Valve	1
49			
50	25-487	(T-Bolt Type) Hose Clamp	2
51	24-1136	1-1/4ID x 96" 100R4 Hose Assembly	1
52	25-215	Filler Cap Assembly	1
53	25-2247	In-Tank Filter	1
	25-2248	Filter Element	1
● Winch			
★ Stabilizer			

HYDRAULIC SCHEMATIC



10/01
M9716-26

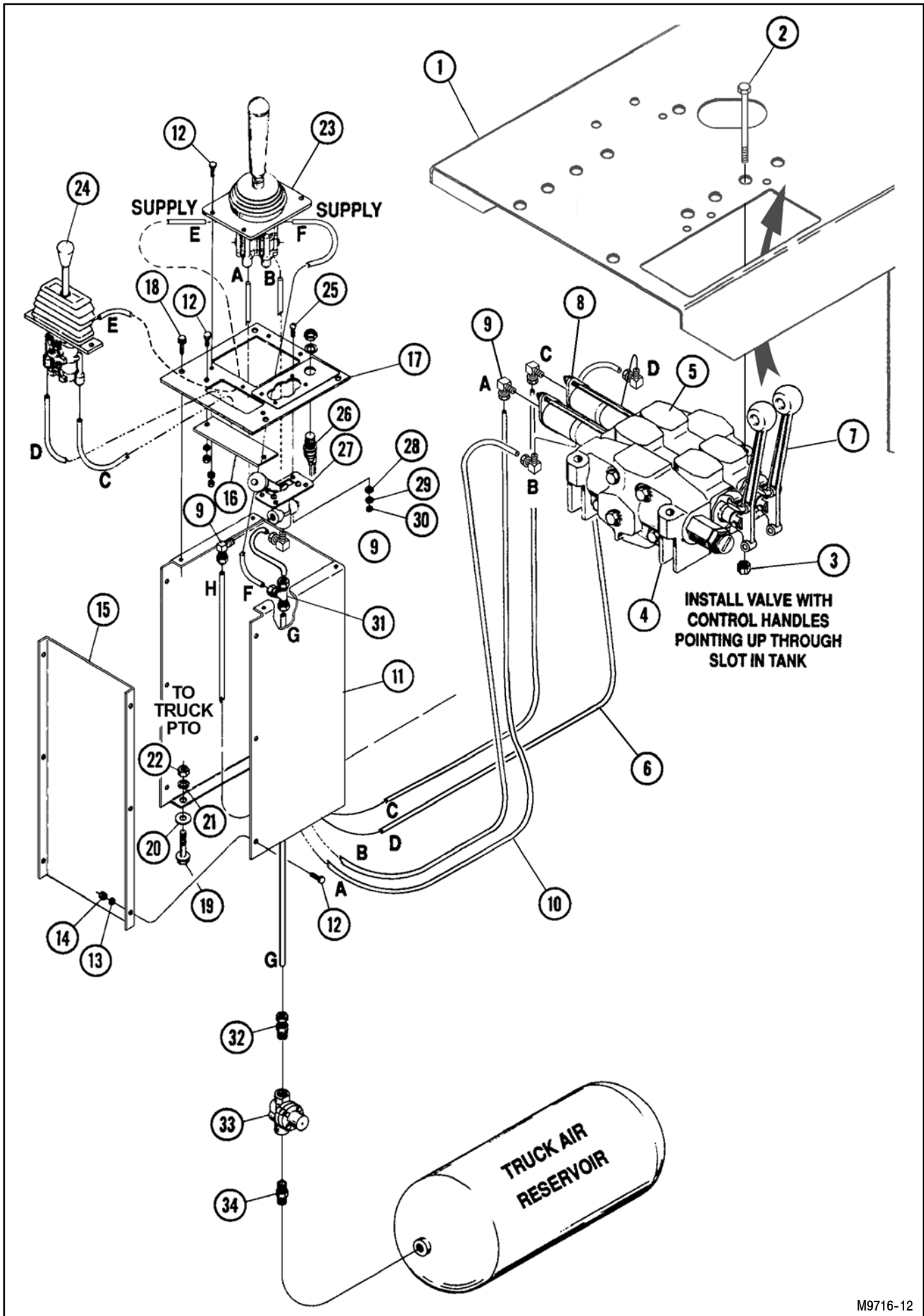
GRESEN VALVE ASSEMBLY



FOR MODELS - ALL

11/00

Item	Part Number	Part Description	Qty.
	25-2495	Gresen V20 2 Spool Valve Assembly (Reversed)	1
1	25-2409	Main Relief Valve	1
2	25-2413	Relief Valve Seal Kit (WH Std. Relief)	1
3	25-2508	Valve Section - 4 Way, 3 Position, Free Flow Spool (Reversed)	1
4	25-2408	Valve Section Seal Kit	1 / Section
5	25-2502	Valve Section - 4 Way, 3 Position Spool (Reversed)	1
6	25-2412	Outlet Cover	1
7		Hex Nut	6
8		Lock Washer	6
9		Studs	3
10	25-2411	Inlet Cover	1



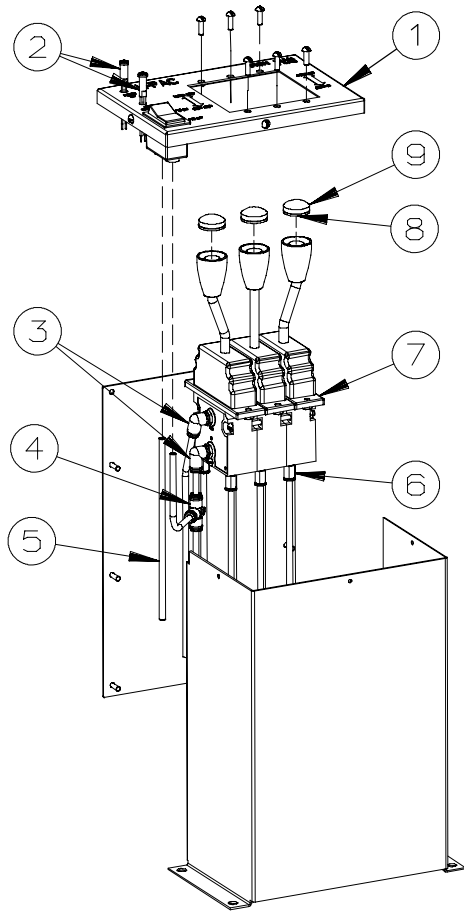
KP816 AIR CONTROL 2 OR 3 SPOOL PARTS

FOR MODELS - KP816

10/01

Item	Part Number	Part Description	Qty.
1		Hydraulic Tank - 30 Gallon	1
2	62-394	5/16NC x 2-1/2" Cap Screw	3
3	63-167	5/16NC Nylon-Top Lock Nut	3
4	25-2495	Control Valve 2 Spool (Rev. w/ Free Flow Spool) V20	1
5	★ 25-2406	Valve Section, 4-Way, 3-Position Spool	1
6	★● 82-124	Air Line	40'
7	9610-45-0	Handle Kit, V-20 Valve	2/3
8	82-288	Air Activator Assembly	2/3
9	82-126	Compression Fitting 1/8NPT(M) - 1/4" Tube 90°	5
10	● 82-124	Air Line	80'
	9274-196-0	Air Control Tower Assembly	1
11	9274-196-2	Tower	1
12	62-530	1/4NC x 1/2" Cap Screw	14
13	64-100	1/4" STD. Lock Washer	14
14	63-100	1/4NC Hex Nut	14
15	9274-196-3	Cover	1
16	9274-196-4	Cap (Used when not equipped with Item 24)	1
17	9274-196-1	Air Control Mounting Plate	1
18	62-342	1/4NC x 3/4" Hex Washer Thread Cutting Screw	4
19	62-115	3/8NC x 1-1/2" Hex Washer Thread Cutting Screw	4
20	64-104	3/8" STD. Flat Washer	4
21	64-103	3/8" STD. Lock Washer	4
22	63-102	3/8NC Hex Nut	4
23	82-157	Joystick Controller	1
24	★ 82-199	Pneumatic Control Valve (1 valve)	1
25	62-485	#10NC x 1/2" Cross Recess Pan Head Machine Screw	4
26		P.T.O. Indicator Light	1
27		Air Valve	1
28	64-158	#10 Flat Washer	4
29	64-170	#10 External Tooth Lock Washer	4
30	63-151	#10 Hex Nut	4
31	82-166	1/4" Tube Union Tee Compression Fitting	1
32	82-163	3/8NPT Male 1/4" Tube Straight Compression Fitting	1
33	82-168	Pressure Protection Valve	1
34	82-167	1/4NPT Hex Nipple	1
★ Used with 3-Spool Valve Assembly ONLY			
● This is a bulk quantity item. Specify the amount required when ordering.			

AIR CONTROLLER ASSEMBLY



82-344 KIT INCLUDES CONTROLLER WITH STRAIGHT HANDLE, CLEAR CAP, 2 SWIVEL CONNECTORS, 2 O-RINGS, AND LONGER SCREWS TO RETAIN SECTIONS

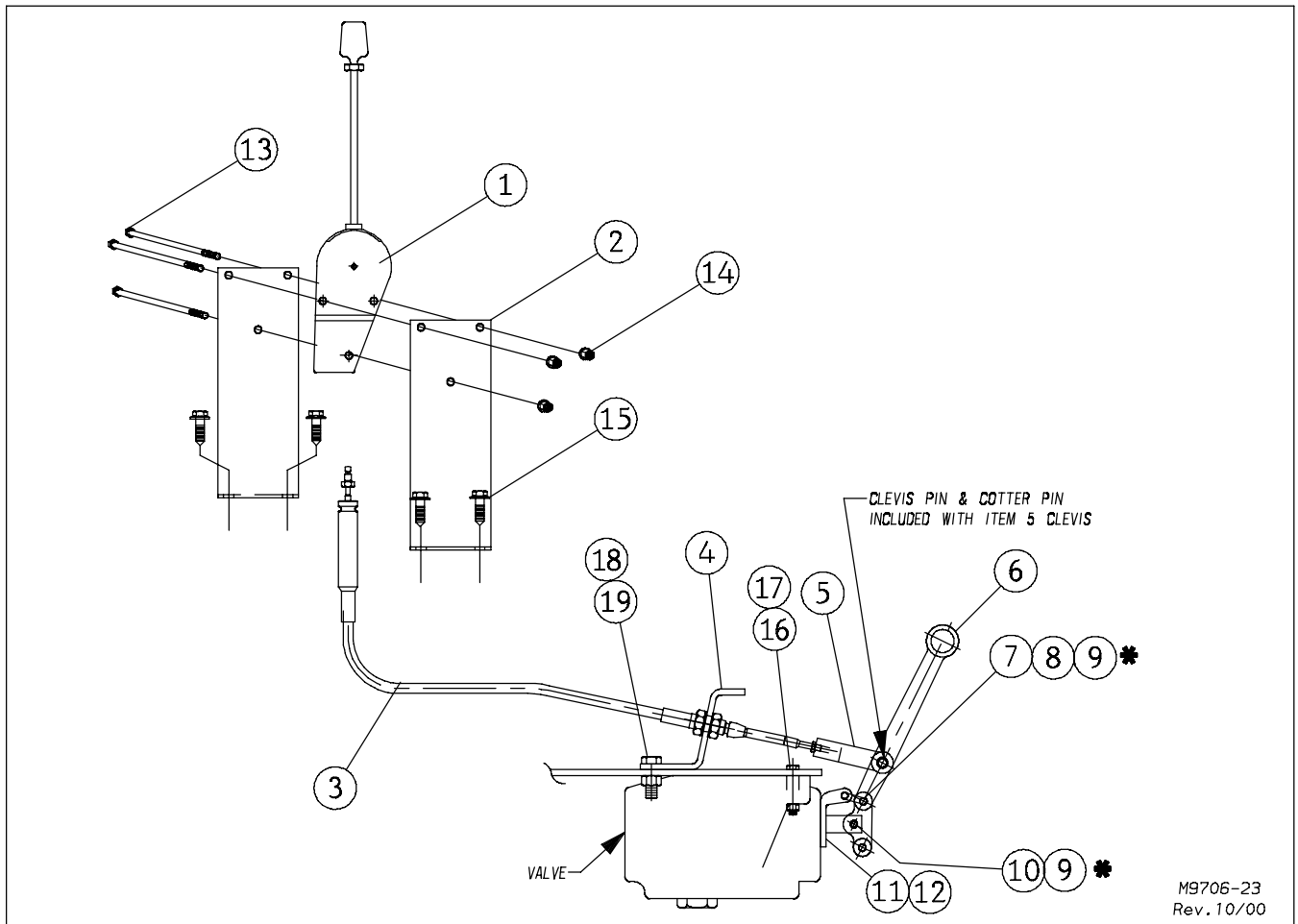
82-345 KIT INCLUDES ELECTRIC PTO SWITCH AND WIRING

FOR MODELS - ALL

1/07

Item	Part Number	Part Description	Qty.
1	82-341	Tower Cover (Stainless Steel)	1
2	79-579	LED Lamp (Includes retaining clip)	2
3	82-313	Elbow, Swivel	2
4	82-314	Tee, Swivel	1
5	82-124	Air Line 1/4od SAE J844 Type "A"	Spec.
6	82-346	Connector, Swivel	4/6★
7	82-332	Pneumatic Controller, 2-Section	1
	82-333	Pneumatic Controller, 3-Section	1
8	74-636	Decals, Controls	1
9	82-343	Clear Cap	2/3★
	82-339	O-Ring (between sections)	2/4★
	82-344	Conversion Kit from 2 To 3 Sections	
	82-345	Conversion Kit To Electric PTO Switch	
Doubled Quantities Reflect 2-Sections / 3 Sections★			

REMOTE VALVE & CONTROLS



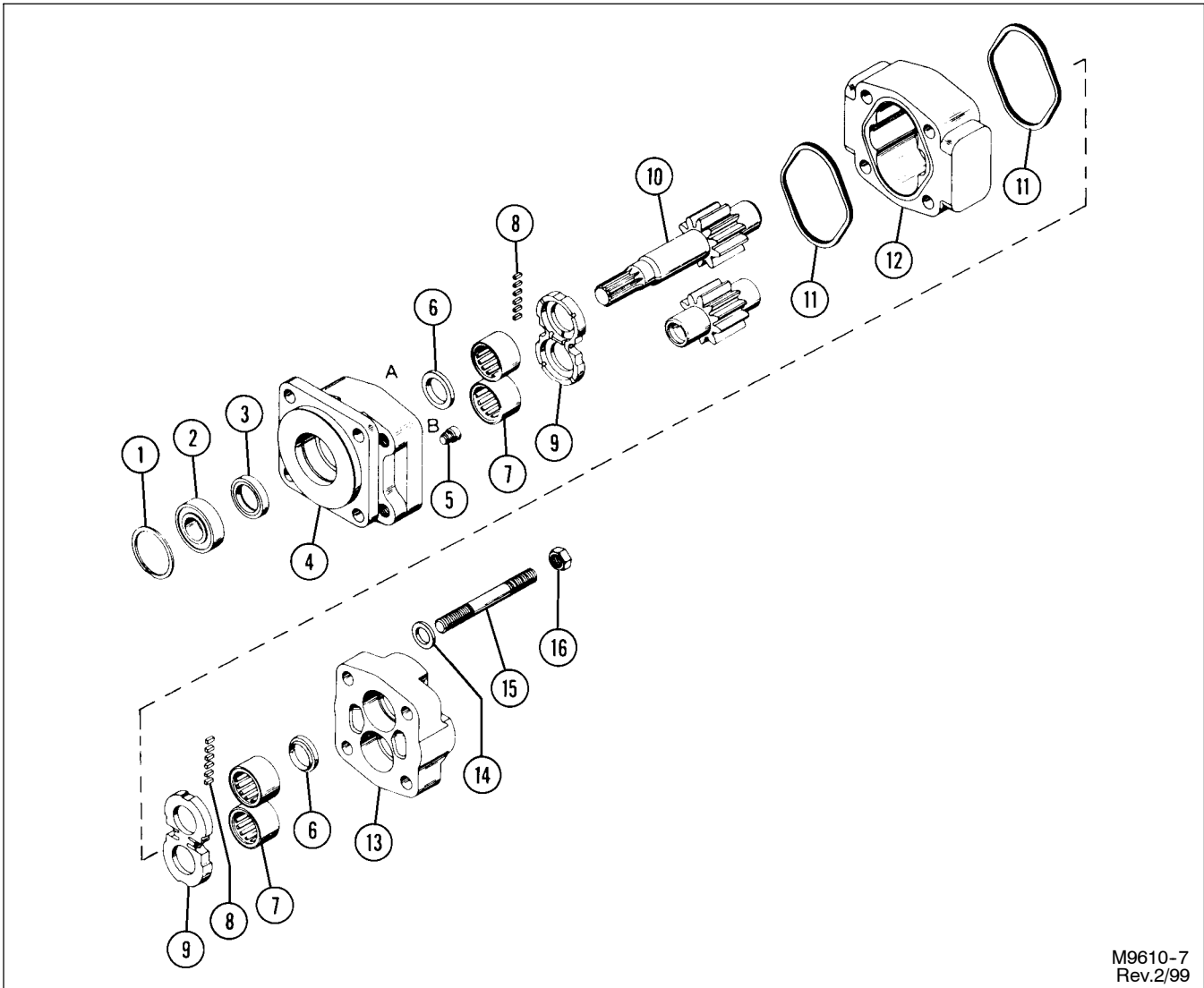
M9706-23
Rev. 10/00

FOR MODELS - KP816

1/07

Item	Part Number	Part Description	Qty.
1	82-238	Controller	2
2	9274-0-1305	Control Mount	2
3	72-132	Cable - 108" Long	2
	72-131	Cable - 156" Long	2
	72-109	Cable - 252" Long	2
4	9610-0-17	Control Cable Bulkhead Plate	1
	9706-0-23	3 Cable Bracket	1
5	72-108	Clevis, 3/8" Hole	2
6	9610-108-1	Valve Handle	2
	25-2505	V-20 Valve Linkage Kit	
7	★	Link	1
8	★	Link Plate	1
9	★	Cotter Pin	3
10	★	Pin	1
11	25-2199	Die Cast Bracket	1
12	25-2201	Screw	2
13	62-106	1/4NC x 4" GD5 Cap Screw	3
14	63-141	1/4NC Hex Flange Serrated Nut	3
15	62-115	3/8NC x 1-1/2" Hex Washer Thread Cutting Screw	4
16	62-394	5/16NC x 2-1/2" GD5 Cap Screw	3
17	63-114	5/16NC Lock Nut	3
18	62-420	1/2NC x 1-1/4" GD5 Cap Screw	2
19	63-107	1/2NC Lock Nut	2
★	Items included in V20 Valve Linkage Kit		

DIRECT MOUNT HYDRAULIC PUMP



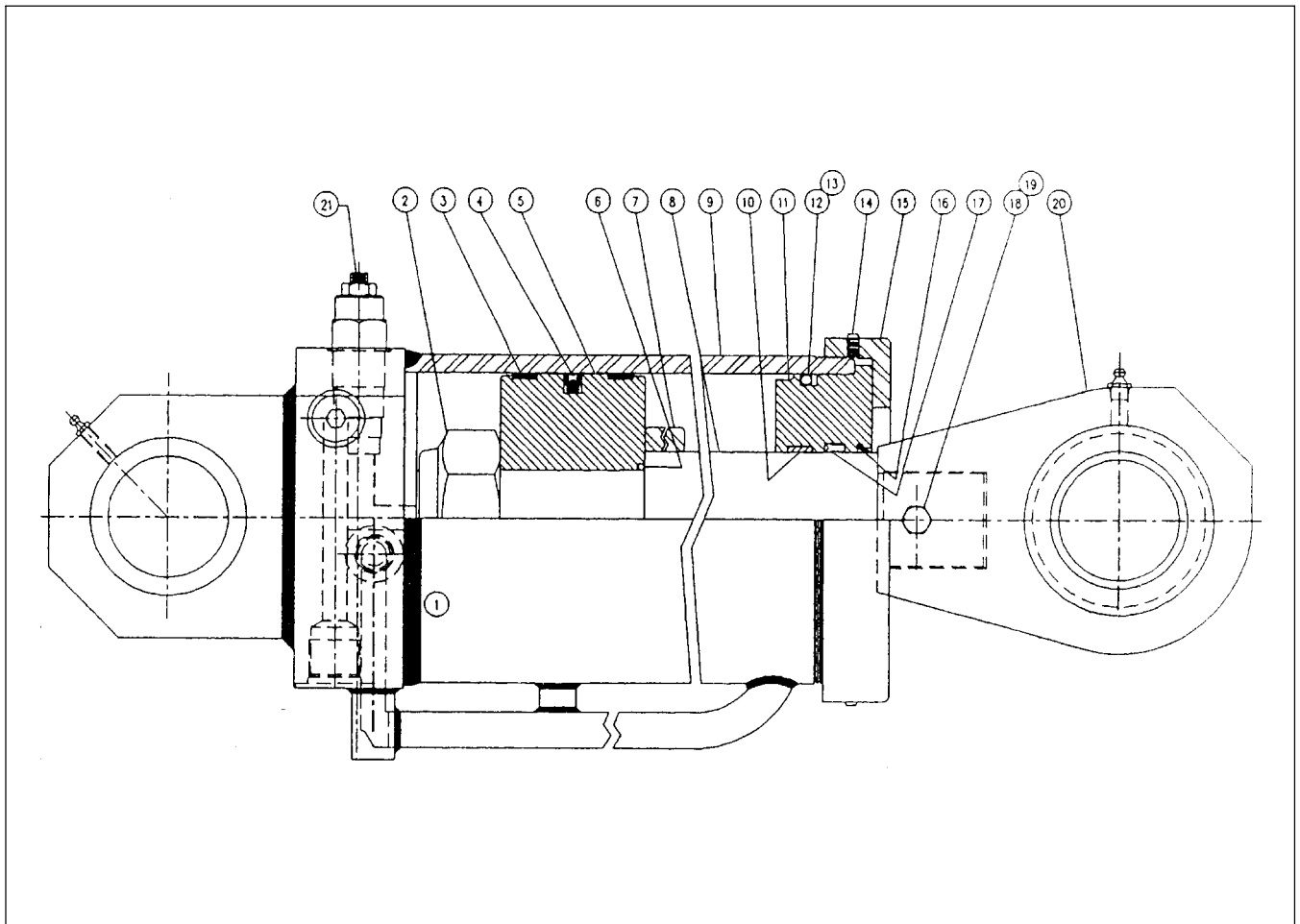
M9610-7
Rev.2/99

FOR MODELS -

2/01

Item	Part Number	Part Description	Qty.
	25-2402	Gear Pump	1
1		Snap Ring	
2		Outboard Bearing	
3		Seal	
4		Shaft End Cover	
5		Check Assemblies or Plug	
6		Ring Seals	
7		Roller Bearings	
8		Pocket Seals	
9		Thrust Plates	
10		Integral Drive Shaft and Gear Set	
11		Gasket Seals	
12		Gear Housing	
13		Port End Cover	
14		Washer	
15		Stud or Cap Screw	
16		Nut	

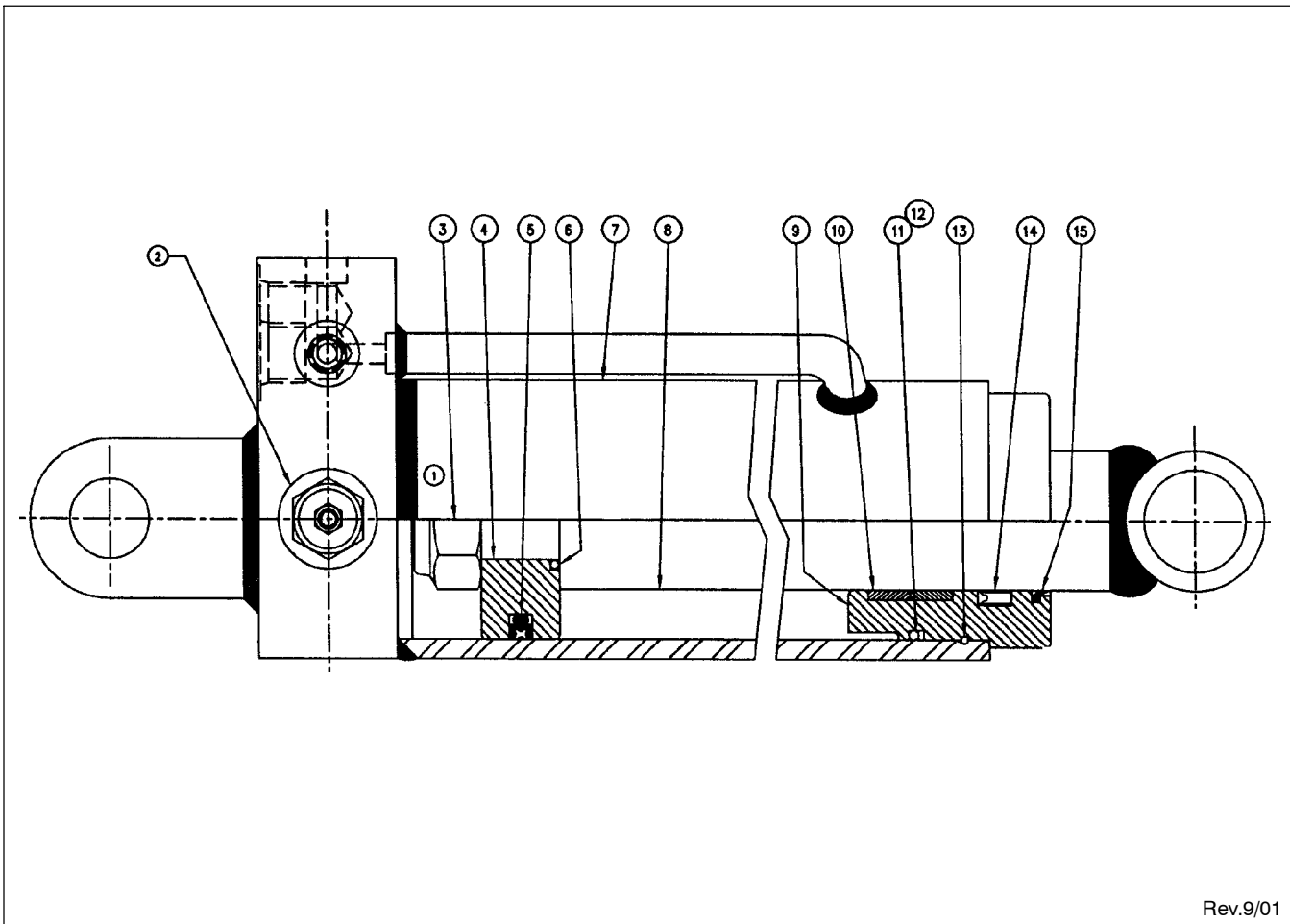
HYDRAULIC CYLINDER ASSEMBLY



23-707 6" x 55-1/2" Hydraulic Cylinder Assembly (LIFT) 4/00
 Retracted - 74-5/8" Extended - 130-1/8" Stroke - 55-1/2" Rod Dia. - 2-3/4"

Item	Part Number	Part Description	Qty.
1		Manufacturer's Label	1
2		Full Locknut	1
3	★	Wear Ring	2
4	★	Piston Seal	1
5		Piston	1
6	★	O-Ring	1
7		Stop Tube	1
8		Rod	1
9		Barrel Assembly	1
10	★	Wear Ring	1
11		Gland	1
12	★	O-Ring	1
13	★	Backup Washer	1
14		Set Screw	2
15		Cap	1
16	★	Rod Wiper	1
17	★	Rod Seal	1
18		3/8" Bolt	1
19		Nylon Lock Nut	1
20		Rod End Assembly	1
21	25-2432	Counterbalance Valve	2
22		3/4" Port Plug	3
	● 23-808	Seal Kit (★ Items Included in Kit)	
	●	Not Included in Cylinder Assembly	

GREEN HYDRAULIC CYLINDER ASSEMBLY

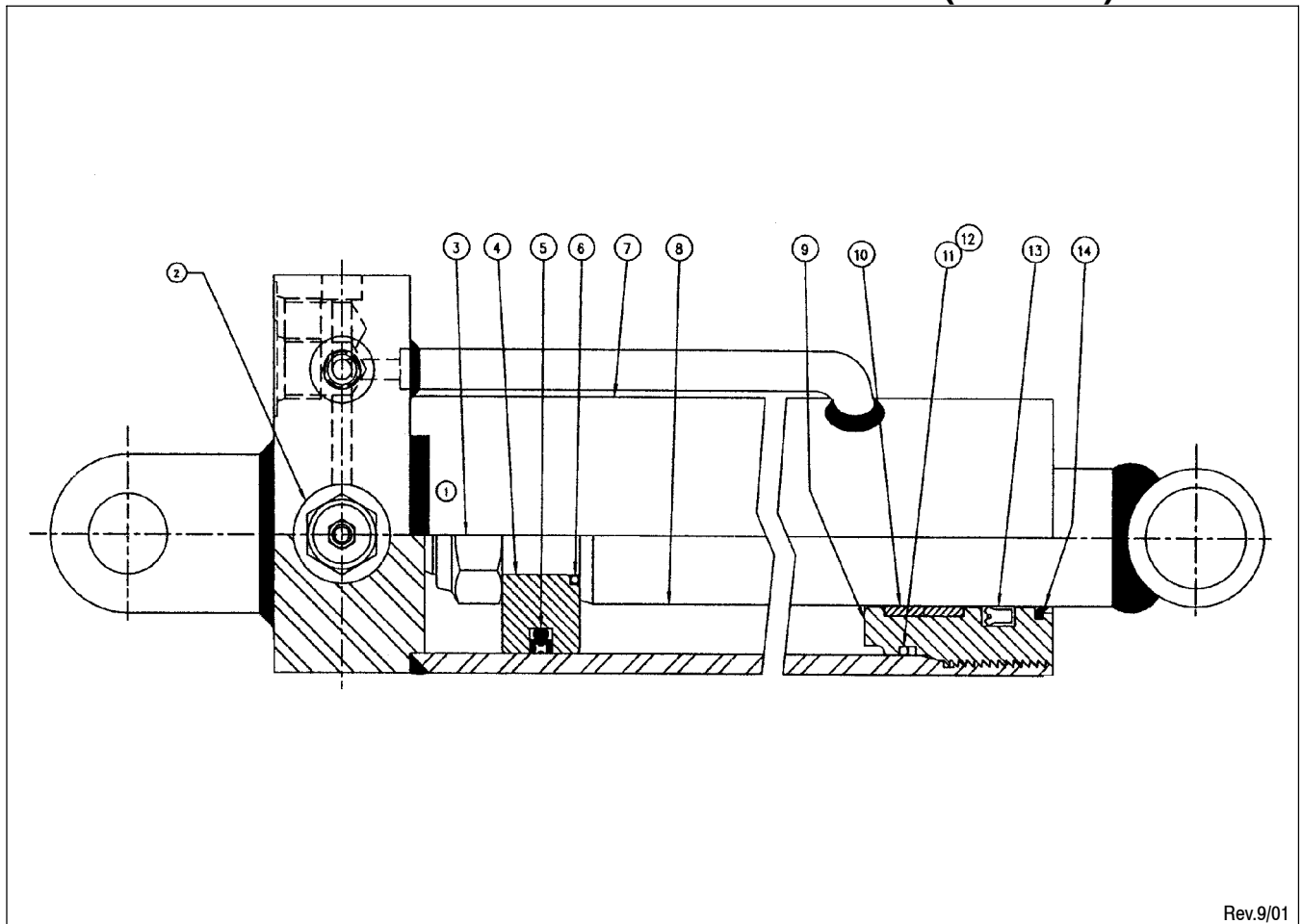


Rev.9/01

23-721 3" x 35" Green Hydraulic Cylinder Assembly (EXTEND) 9/01
 Retracted - 45" Extended - 80" Stroke - 35" Rod Dia. - 1-3/4"

Item	Part Number	Part Description	Qty.
1		Manufacturer's Label	1
2	25-2433	Counterbalance Valve	2
3		Full Locknut	1
4		Piston	1
5	★	Piston Seal	1
6	★	O-Ring	1
7		Barrel Assembly	1
8		Rod Assembly	1
9		Head	1
10	★	Wear Ring	1
11	★	O-Ring	1
12	★	Back-up Washer	1
13		Lock Wire	1
14	★	Rod Seal	1
15	★	Rod Wiper	1
16		Steel Plug (not shown)	1
	● 23-803	Seal Kit (★ Items Included in Kit)	
		● Not Included in Cylinder Assembly	

HYDRAULIC CYLINDER ASSEMBLY (156 CA)

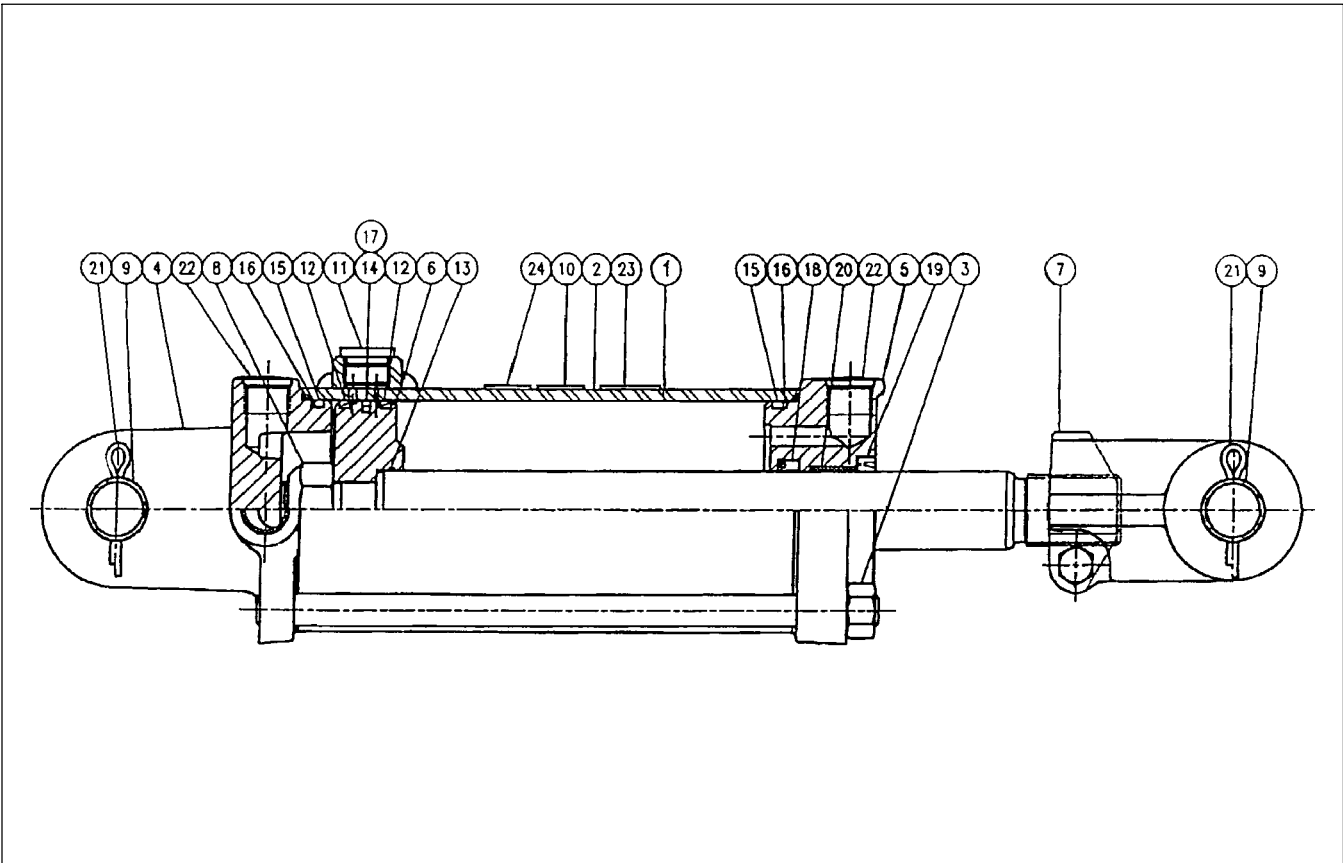


Rev.9/01

23-722 3" x 48" Hydraulic Cylinder Assembly (BOOM EXTEND) 9/01
 Retracted - 58" Extended - 106" Stroke - 48" Rod Dia. - 1-3/4"

Item	Part Number	Part Description	Qty.
1		Manufacturer's Label	1
2	25-2433	Counterbalance Valve	2
3		Full Locknut	1
4		Piston	1
5	★	Piston Seal	1
6	★	O-Ring	1
7		Barrel Assembly	1
8		Rod Assembly	1
9		Head	1
10	★	Wear Ring	2
11	★	O-Ring	1
12	★	Back-up Washer	1
13	★	Rod Seal	1
14	★	Rod Wiper	1
15		Steel Plug (not shown)	1
	● 23-803	Seal Kit (★ Items Included in Kit)	
		● Not Included in Cylinder Assembly	

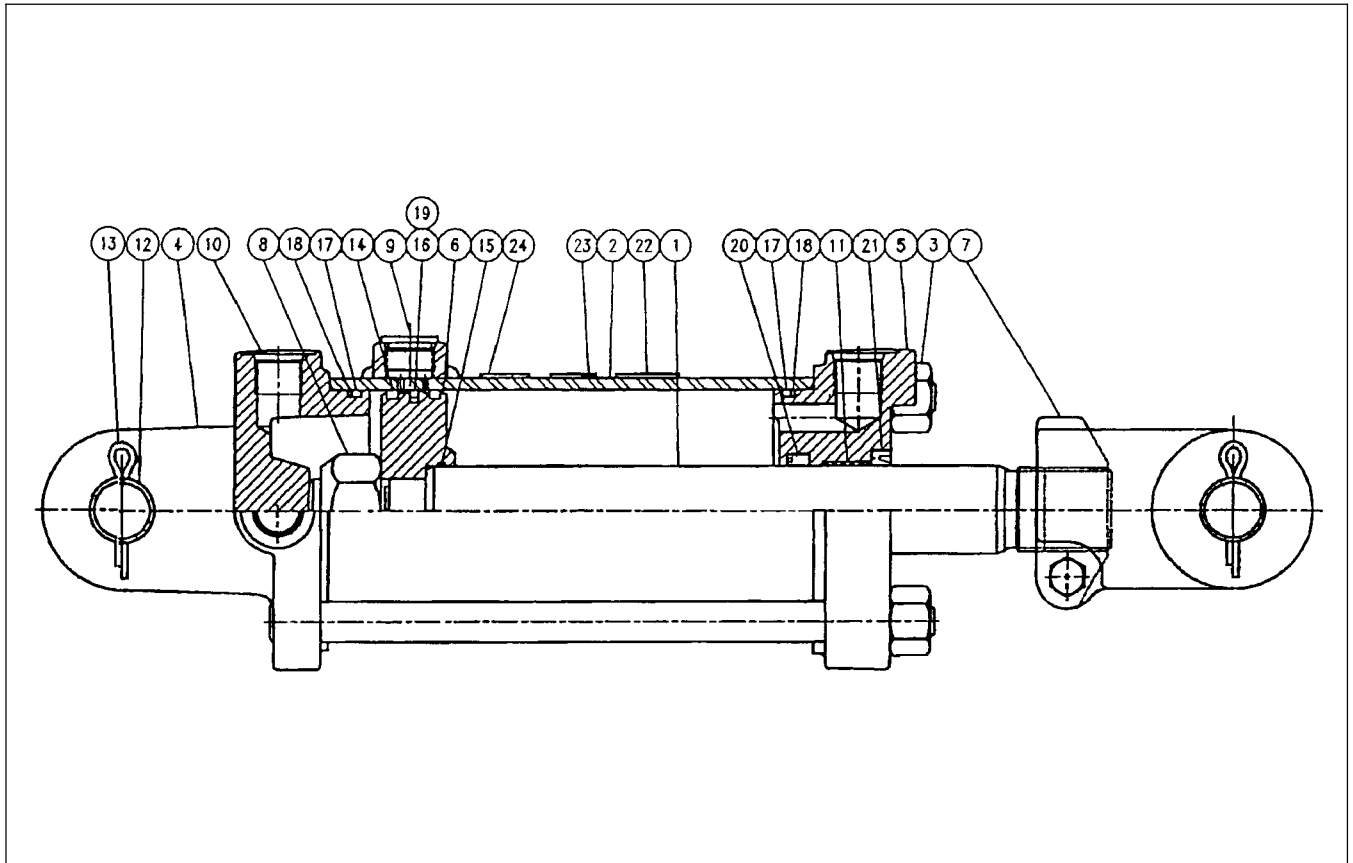
PRINCE HYDRAULIC CYLINDER



21-1022 3-1/2" X 10" PRINCE HYDRAULIC CYLINDER ASSEMBLY (Series) 12/00
Retracted - 22-1/4" Extended - 32-1/4" Stroke - 10" Rod Diameter - 1-1/4"

Item	Part Number	Part Description	Qty.
1		Piston Rod	1
2		Tube Assembly	1
3		Tie Rod Assembly	4
4		Butt	1
5		Gland Assembly	1
6		Piston	1
7	21-2131	Clevis Assembly	1
8		Lock Nut	1
9	21-376	Clevis Pin	2
10	21-2121	Seal Kit Decal	1
11		Port Plug	1
12	★	Bearing Ring	2
13	★	O-Ring	1
14	★	O-Ring	1
15	★	O-Ring	2
16	★	Back-Up Washer	2
17	★	Teflon Seal	1
18	★	U-Cup	1
19	★	Wiper	1
20		Bushing	1
21	60-703	3/16" DIA. x 1-3/4" Cotter Pin	4
22	21-404	Port Plug	3
23	21-443	Series Caution Decal	1
24	74-113	Cylinder WARNING Decal	1
	21-2088	Seal Kit (★ Items Included in Kit)	

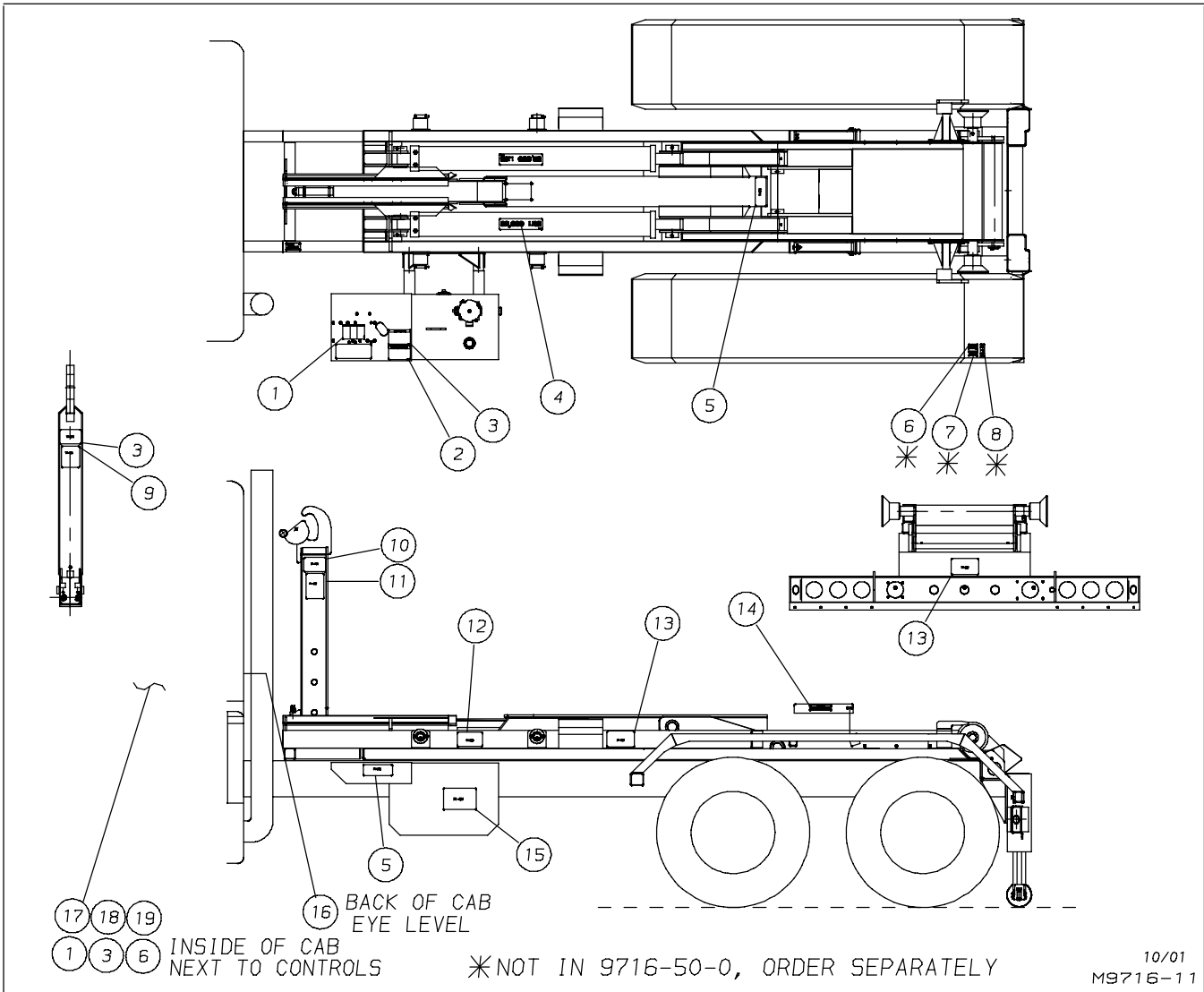
PRINCE HYDRAULIC CYLINDER



21-1023 3-3/4" X 10" PRINCE HYDRAULIC CYLINDER ASSEMBLY (Series) 12/00
Retracted - 22-1/4" Extended - 32-1/4" Stroke - 10" Rod Diameter - 1-3/8"

Item	Part Number	Part Description	Qty.
1		Piston Rod	1
2		Tube Assembly	1
3		Tie Rod Assembly	4
4		Butt	1
5		Gland	1
6		Piston	1
7	21-2126	Clevis Assembly	1
8		Lock Nut	1
9		Port Plug	1
10		Port Plug	3
11		Bushing	1
12	21-260	Clevis Pin	2
13	60-703	3/16" DIA. x 1-3/4" Cotter Pin	4
14	★	Bearing Ring	2
15	★	O-Ring	1
16	★	O-Ring	1
17	★	O-Ring	2
18	★	Back-Up Washer	2
19	★	Teflon Seal	1
20	★	U-Cup	1
21	★	Wiper	1
22	21-443	Series Caution Decal	1
23	21-2117	Seal Kit Decal	1
24	74-113	Cylinder Warning Decal	1
	● 21-808	Seal Kit (★ Items Included in Kit)	

DECALS



FOR MODEL - KP816

7/04

Item	Part Number	Part Description	Qty.
1	74-598	Decal - Important Valve Operation	2
2	74-596	Decal - Danger Operating Outside Controls	1
3	74-593	Decal - Danger Lock Must Be Engaged	3
4	74-579	Decal - 32,000 Lbs.	2
5	74-276	Decal - Warning Hydraulic Safety	2
6	74-481	Decal - Caution Do Not Drive PTO	2
7	74-476	Decal - Caution Set Brake	1
8	74-286	Decal - Winch	1
9	74-485	Decal - Danger Power Lines (Hooklift)	1
10	74-490	Decal - Danger Hook Height Match	1
11	74-606	Decal - Trademark	2
12	74-288	Decal - Warning Raised Hoist	2
13	74-302	Decal - Danger Unit Operation	3
14	74-387	Decal - Cylinder Lock	2
15	74-266	Decal - K-PAC	1
16	74-477	Decal - Caution Safety Instructions	1
17	74-297	Decal - Warning Uneven Ground	1
18	74-478	Decal - Important Operation Instruction	1
19	74-486	Decal - Warning Align Container	1
20	★ 74-600	Reflective Tape - Red/White (NOT SHOWN)	20 Ft.
21	★ 74-601	Reflective Tape - White (NOT SHOWN)	4
★ Specify exact quantity needed. See page A13 for suggested locations on truck frame			