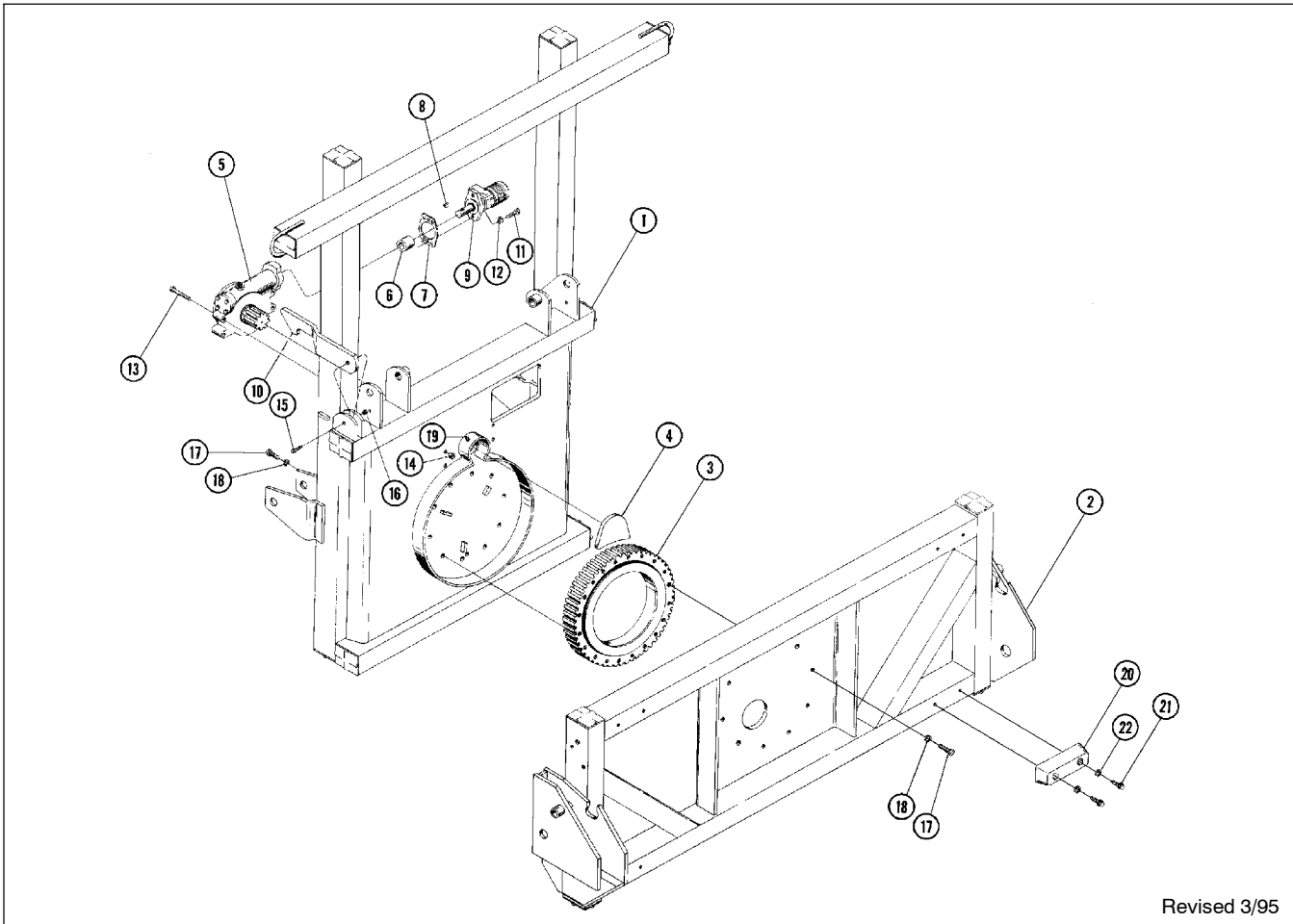


M9305-2
Rev.11/00

ROTATOR FRAME & FORK CARRIAGE



Revised 3/95

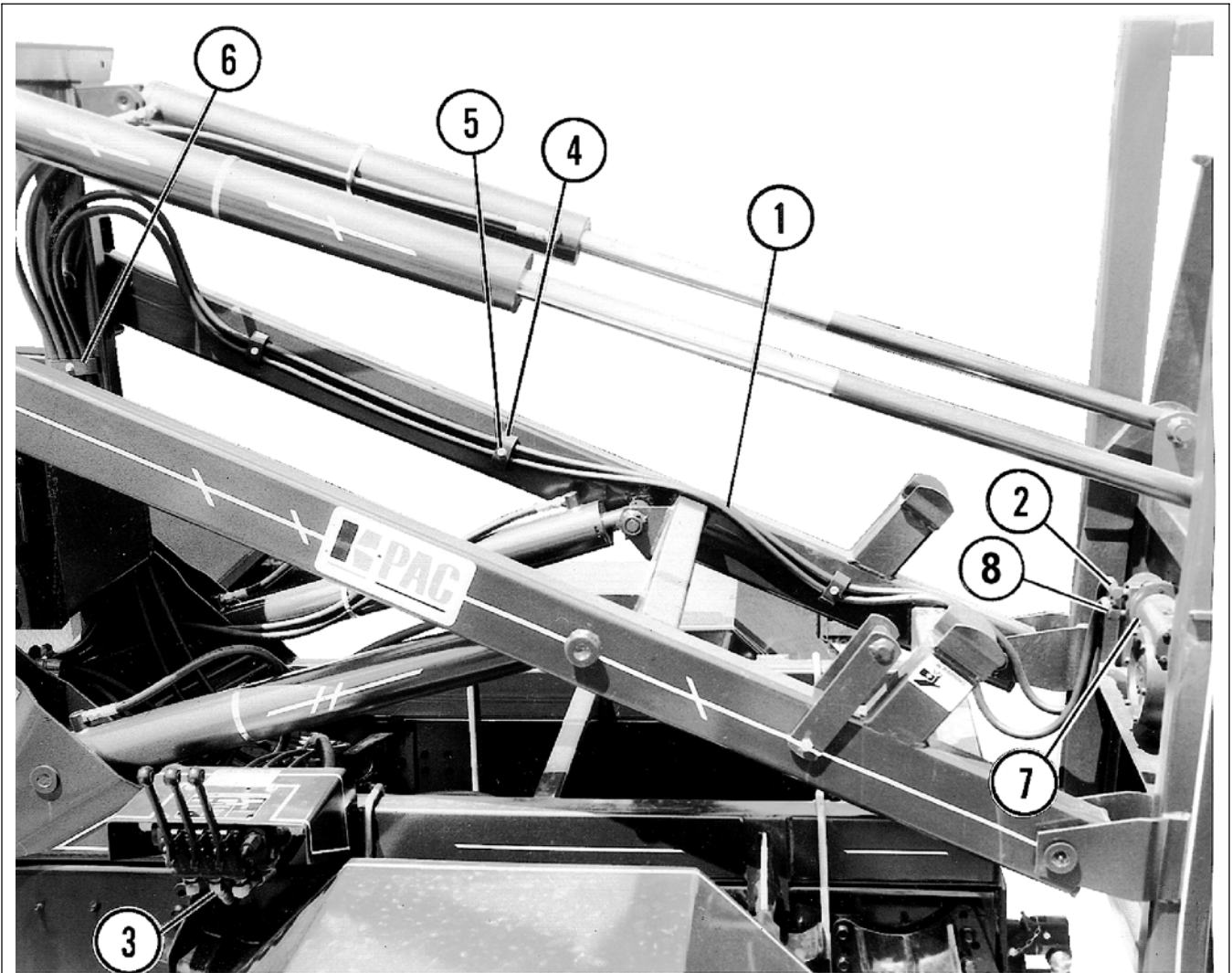
FOR MODELS - KPCCR

2/97

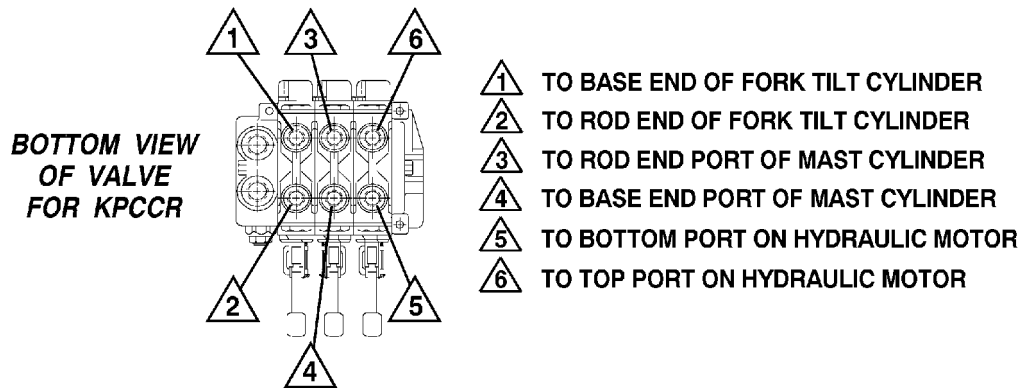
Item	Part Number	Part Description	Qty.
1	9310-20-0	Rotator Frame Weldment	1
2	9310-21-0	Fork Carriage Weldment	1
3	25-2226	Ring Gear Bearing Assembly	1
4	9310-22-0	Gear Cover	1
5	★ 25-2221	Transmission Assembly	1
6	25-2222	Coupler	1
7	25-2223	Gasket	1
8	25-2224	Key	1
9	★ 25-2225	Hydraulic Motor Assembly	1
10	9310-120-1	Latch	1
11	62-569	1/2NC x 1-1/2" GD.5 Cap Screw	2
12	64-107	1/2" STD. Lock Washer	2
13	62-151	1/2NC x 3" GD. 5 Cap Screw	4
14	63-107	1/2NC Self Locking Nut	4
15	62-118	3/8NC x 2-1/2" GD. 5 Cap Screw	1
16	63-134	3/8NC Nylon-Top Lock Nut	1
17	62-424	5/8NC x 1-1/2" GD. 5 Cap Screw	30
18	64-109	5/8" STD. Lock Washer	30
19	65-114	1/4" Self Tapping Zerk	1
20	44-131	Rubber Container Bumper	4
21	62-115	3/8NC x 1-1/2" Hex Washer Thread Cutting Screw	8
22	64-104	3/8" STD. Flat Washer	8

★ See page P5 for parts listing

ROTATOR HYDRAULICS



M9305-1
Rev.6/96

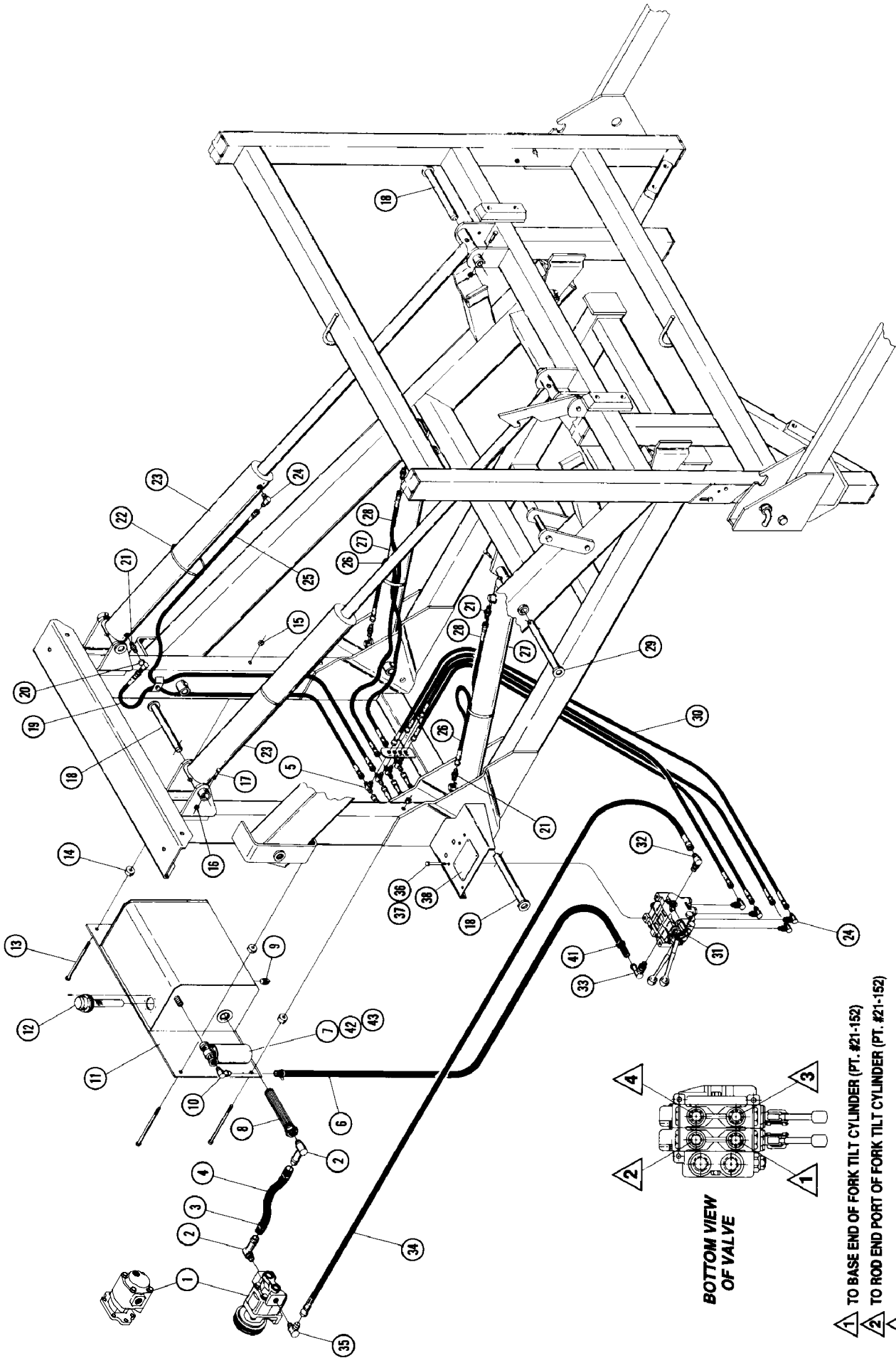


M9305-3

FOR MODELS - KPCCR

12/98

Item	Part Number	Part Description	Qty.
1	24-389R	Hose Assembly 1/2" x 210" JIC	2
2	25-362	1/2NPT (M) to 3/4 JIC (M) 90° Fitting	2
3	25-312	O-Ring 37° Flare x 45° Ell	1
4	9310-70-1	Hose Clamp (2 Hose)	3
5	62-115	3/8NC x 1-1/2" Hex Washer Thread Cutting Screw	4
6	★ 9310-70-2	Hose Clamp (4 Hose)	1
7		Hydraulic Motor (see page P4 for parts information)	
8	25-313	1/2NPT (M) to 3/4 JIC (M) Fitting	
	25-310	37° Flare M / F 90° Ell	
★ Replaced (1) Item 40 on page P8.			



- 1 TO BASE END OF FORK TILT CYLINDER (PT. #21-152)
- 2 TO ROD END PORT OF FORK TILT CYLINDER (PT. #21-152)
- 3 TO ROD END PORT OF MAST CYLINDER (PT. #21-151)
- 4 TO BASE PORT OF MAST CYLINDER (PT. #21-151)

HYDRAULICS

FOR MODELS - ALL

3/08

Item	Part Number	Part Description	Qty.
1	25-2139	Clutch Pump (10 gpm)	1
	25-2303	Direct Mounting Pump	1
2	25-170	1-1/4NPT - 1-1/4" Hose Hydraulic Fitting	2
	● 25-1177	1NPT (M) to 1-1/4"Hose End Hydraulic Fitting	1
3	25-165	Hose Clamp (1-5/16" to 2-1/4")	2
4	24-1103	1-1/4" x 156" Low Pressure Hose	1
5	25-326	37° Male Bulkhead Tee	4
6	24-1102	3/4" x 72" Low Pressure Hose	1
7	25-2138	Oil Filter Assembly	1
8	25-233	Oil Strainer	1
9	75-103	Drain Plug (3/4NPT)	1
10	25-188	3/4NPT to 3/4" Hose 90° Hydraulic Fitting	1
11	9305-40-0	Hydraulic Tank Weldment	1
12	25-214	Filler Cap Assembly w/ Dip Stick	1
13	62-162	1/2NC x 7-1/2" GD.5 Cap Screw	4
14	44-108	Rubber Bumper	4
15	63-107	1/2NC Self Locking Nut	4
16	63-134	3/8NC Self Locking Nut	8
17	62-118	3/8NC x 2-1/2" GD.5 Cap Screw	8
18	9305-47-0	Cylinder Pivot Pin	6
19	24-3035R	1/2" x 72" JIC Hydraulic Hose	2
20	25-310	37° Flare Male / Female 90° Ell	2
21	25-300	3/4 O-Ring - 3/4 JIC Male Coupler	6
22	25-189	Hose Clamp (6" Diameter)	4
23	21-152	4" x 29" Fork Tilt Hydraulic Cylinder Assembly	2
24	25-301	O-Ring 37° Flare 90° Ell	6
25	24-321R	1/2" x 104" Hydraulic Hose	2
26	24-387R	1/2" x 56" Hydraulic Hose	2
27	21-151	4" x 32" Mast Hydraulic Cylinder Assembly	2
28	24-303R	1/2" x 58" Hydraulic Hose	2
29	9305-48-0	Cylinder Pivot Pin Weldment	2
30	24-303R	1/2" x 58" Hydraulic Hose	4
31	25-2237	Valve - 2 Spool (SHOWN)	1
	25-2238	Valve - 3 Spool (Optional) (See page P6)	1
32	25-357	1-1/16 JIC Male - 1-1/16 O-Ring 90° Ell	1
33	25-372	1-1/16 O-Ring - 3/4" Hose 90°	1
34	24-619	3/4 JIC x 192" Hydraulic Hose	1
35	25-370	1-1/16 JIC Male - 3/4NPT Male 90° Ell	1
	● 25-534	1-1/16 JIC(M) to 1NPTF (M) Hydraulic Fitting	1
36	62-396	5/16NC x 3" GD. 5 Cap Screw	3
37	63-139	5/16NC Self Locking Nut	3
38	74-373	Valve Plate	1
39	62-115	3/8NC x Self Tapping Cap Screw	☆2 / 6○
40	9310-70-1	Hose Clamp (2 Hose - for Model KPCC)	☆2 / 5○
	9310-70-2	Hose Clamp (4 Hose - for Model KPCCR)	1○
41	25-1103	Hose Clamp (3/4" to 1-1/2")	2
42	★ 25-2250	Oil Filter Element	1
43	★ 25-2251	Oil Filter Head	1

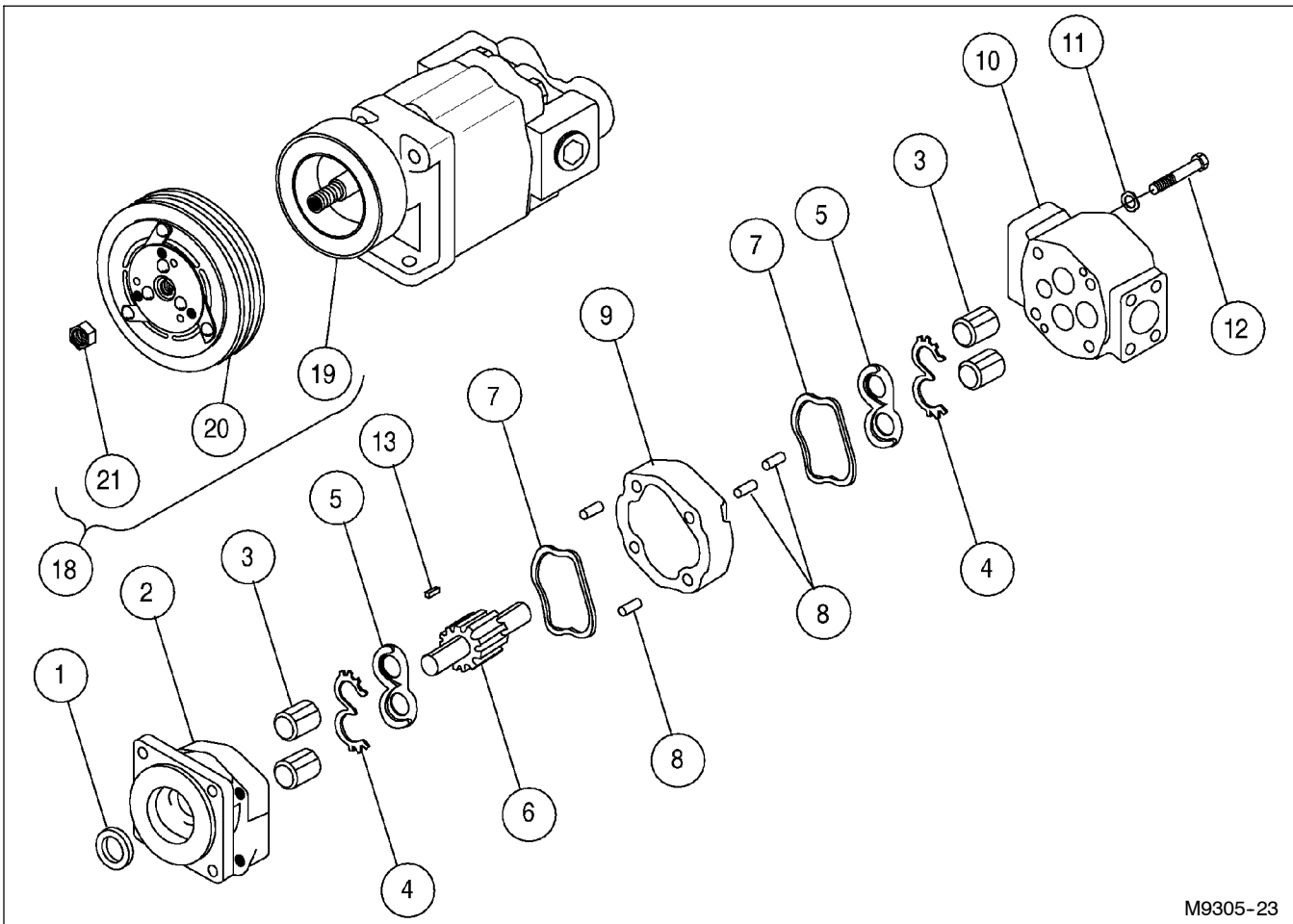
★ This item is contained in Item 7 Oil Filter Assembly, but can be ordered separately.

● This item is used with the Direct Mount Pump Only

☆ Quantity used for KPCC

○ Quantity used for KPCCR

MUNCIE PUMP & CLUTCH ASSEMBLIES



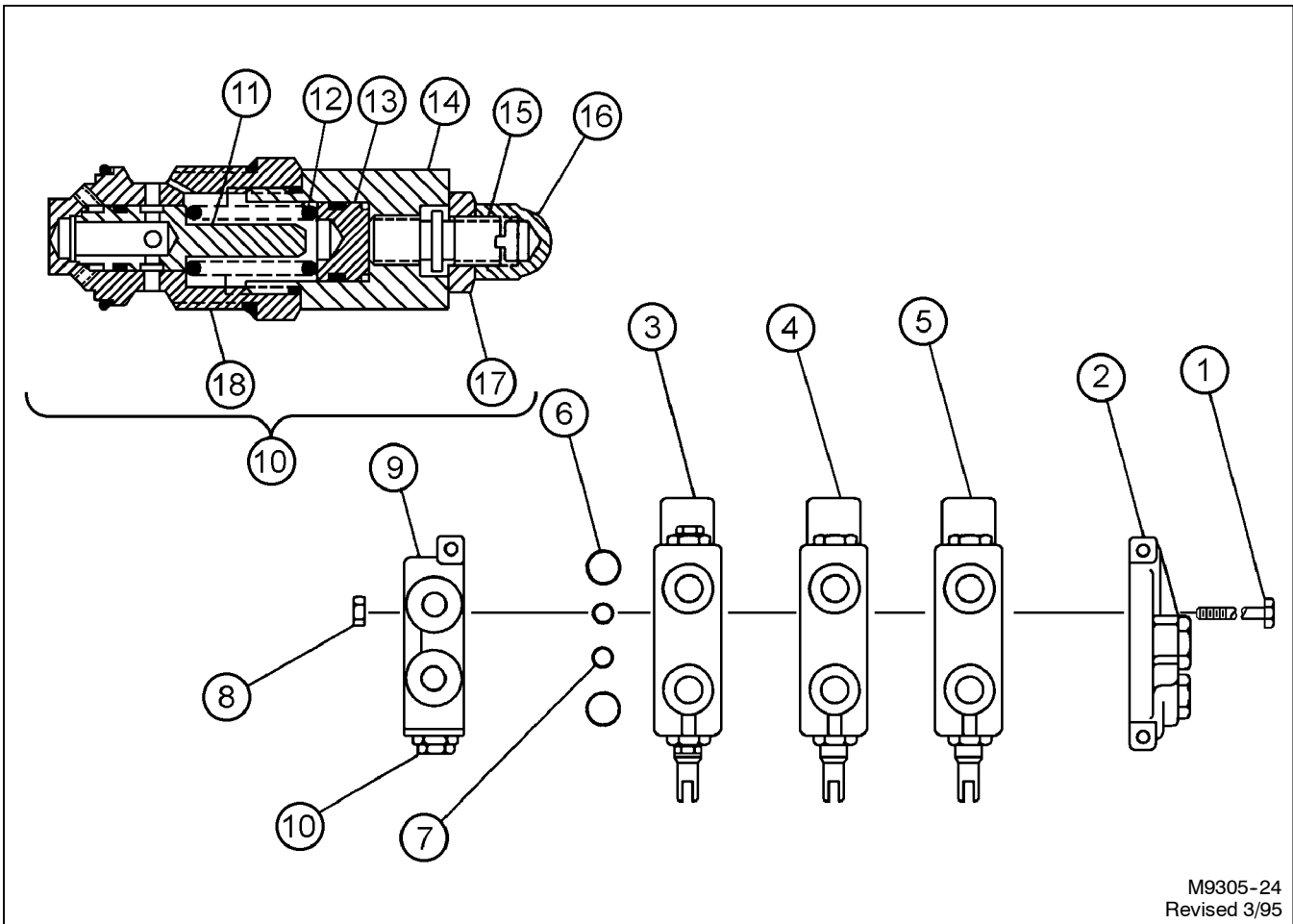
M9305-23

FOR MODELS - H SERIES PUMP

10/93

Item	Part Number	Part Description	Qty.
1	25-2145	Shaft Seal	1
2	25-2146	Front Cover	1
3	25-2147	Bushings	4
4	25-2148	Balance Seal	2
5	25-2149	Wear Plate	2
6	25-2150	Gear Set	1
7	25-2151	Body Seal	2
8	25-2152	Dowell Pins	4
9	25-2153	Pump Housing	1
10	25-2154	Rear Cover	1
11	25-2155	Lock Washer	4
12	25-2156	Cap Screw	4
13	25-2157	Woodruff Key	1
14	25-2158	Nut	1
15	25-2159	Snap Ring	1
16	25-2160	Pipe Plug - 3/4	1
17	25-2161	Pipe Plug - 1-1/4	1
	25-2162	Seal Kit (Includes Items 1, 4, and 7)	
	25-2163	Rebuild Kit (Includes Items 1, 4, 5, and 7)	
	25-2164	Bearing Kit (Includes bushings)	
18	25-2165	Clutch	1
19	25-2166	Coil - Clutch	1
20	25-2167	Pulley - Clutch	1
21	63-227	1/2NF Hex Locking Jam Nut	1

GRESEN VALVE ASSEMBLY

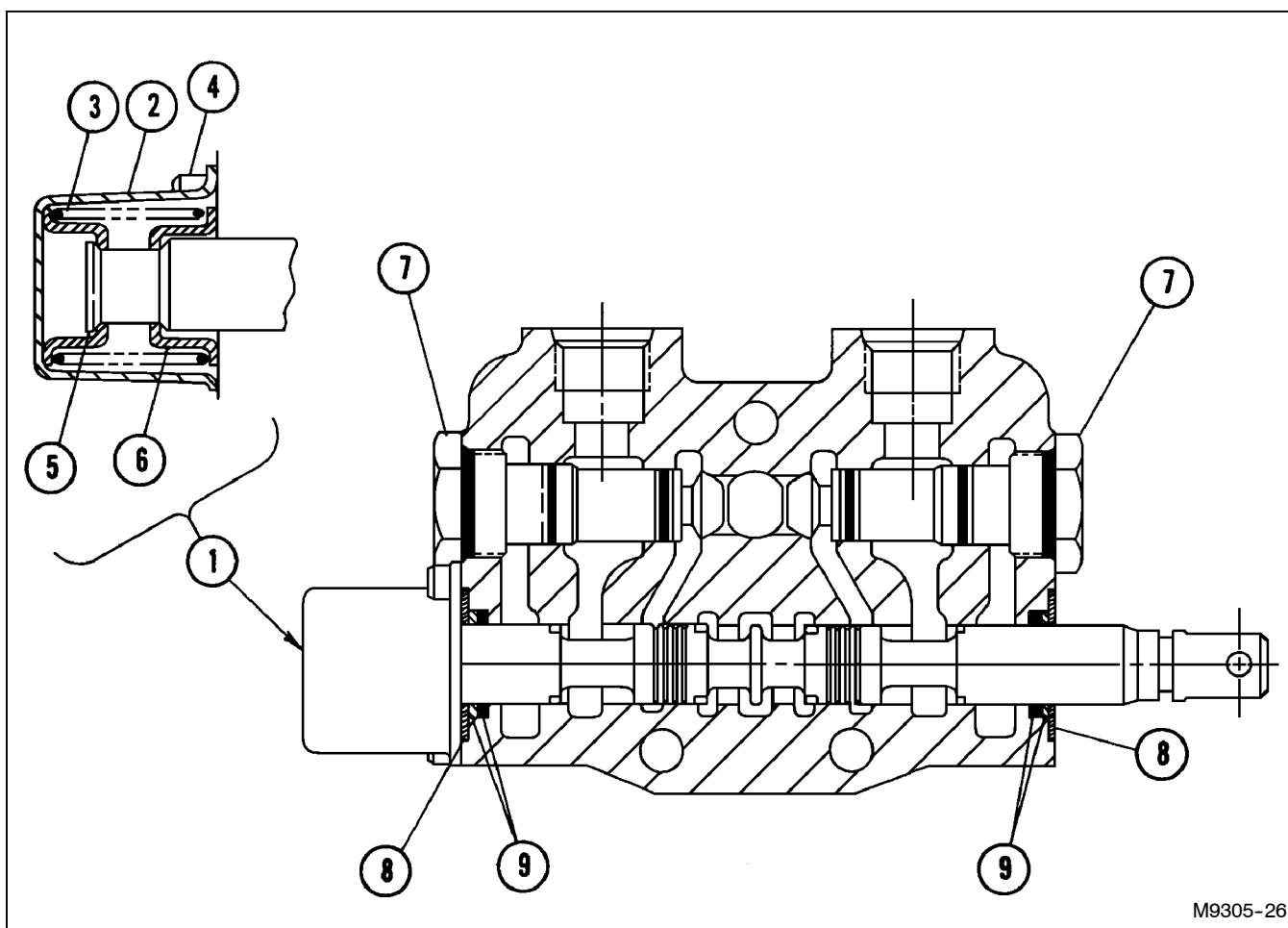


FOR MODELS - ALL

3/95

Item	Part Number	Part Description	Qty.
	25-2237	2-Section Valve Assembly w/ Lockout	1
	25-2238	3-Section Valve Assembly w/ Lockout	1
	25-2246	Accessory Kit - Add 3rd Spool to 25-2237 (Not shown)	
1	★	Stud Bolt	3
2	25-2174	Outlet Cover	1
3		First Spool Section (See page P13 for parts listing)	1
4		Second Spool Section (See page P15 for parts listing)	1
5		Third Spool Section (See page P15 for parts listing)	1
6	25-2171	Exhaust O-Ring, Large	2
7	25-2172	Pressure O-Ring, Small	2
8	★	Stud Nut	2
9	25-2170	Left Cover	3
10		Main Relief Assembly - Model WHA	1
	25-2181	Seal Kit (for Main Relief)	1
11	25-2187	Poppet	1
12	25-2188	Spring	1
13	25-2182	Piston	1
14	25-2183	Cap	1
15	25-2185	Adjusting Stem	1
16	25-2184	Acorn Nut	1
17	25-2186	Hex Jam Nut	1
18	25-2189	WH Relief Body	1
★ Included in 2 or 3 Section Valve Assembly			

VALVE SPOOL ASSEMBLY



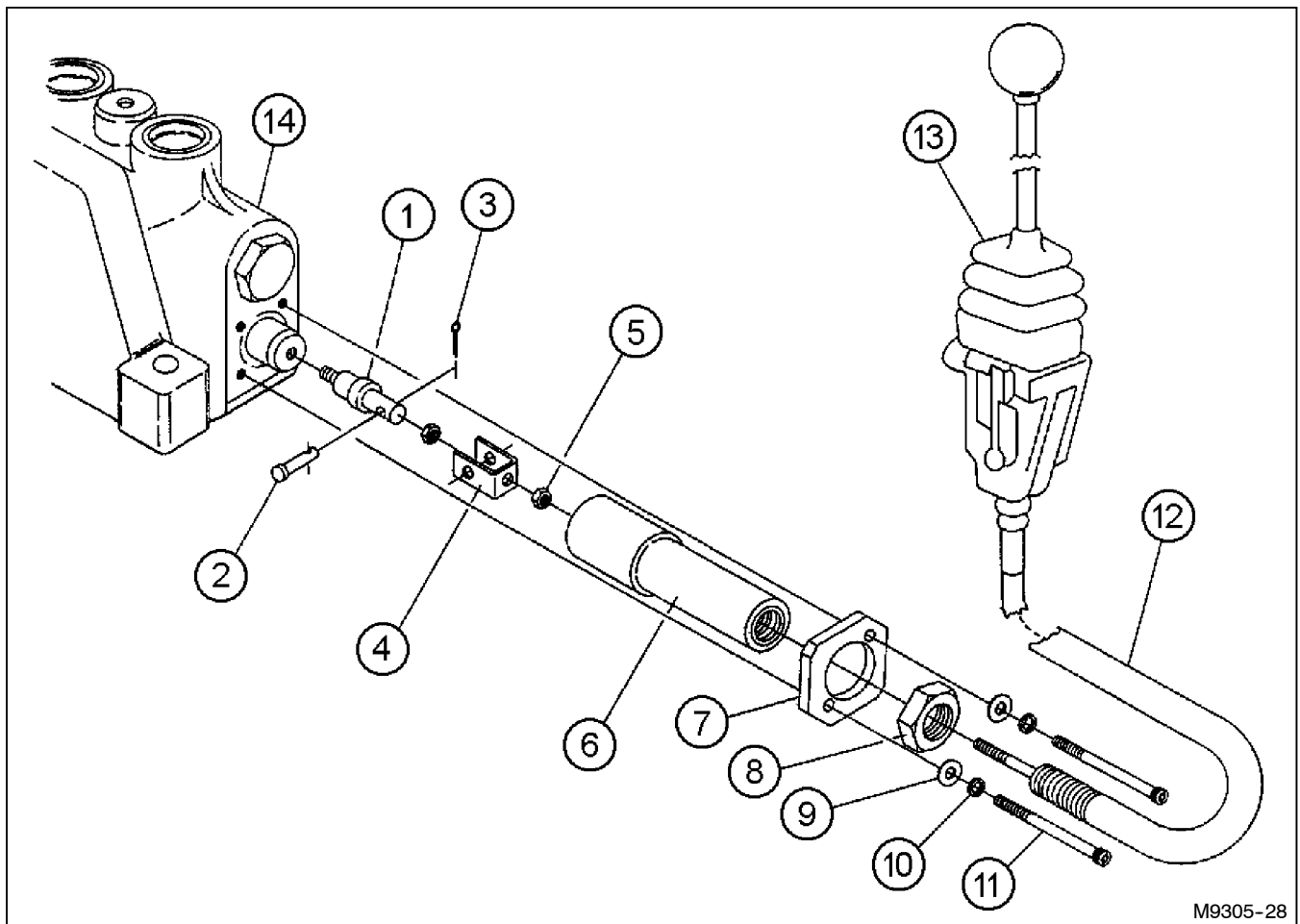
M9305-26

FOR MODELS - 2ND SPOOL & OPTIONAL 3RD SPOOL

5/90

Item	Part Number	Part Description	Qty.
1	★ 25-2173	STD. Spool Positioner Replacement Kit	1
2	25-2179	Bonnet	1
3	25-2176	Return Spring	1
4	25-2180	Screw	2
5	25-2178	Spool Collar	1
6	25-2177	Spring Collar	2
7	25-2190	Lockout Check Assembly Replacement Kit	2
	25-2191	Lockout Check Assembly Seal Kit	
8	25-2192	Plate Washer Retainer	2
9	25-2193	Seal Kit	1
★ Used for 9305-51-0 3-Spool, 2-Cable Adapter Kit ONLY			

CABLE-VALVE ASSEMBLY (SERIAL #1001-2149)



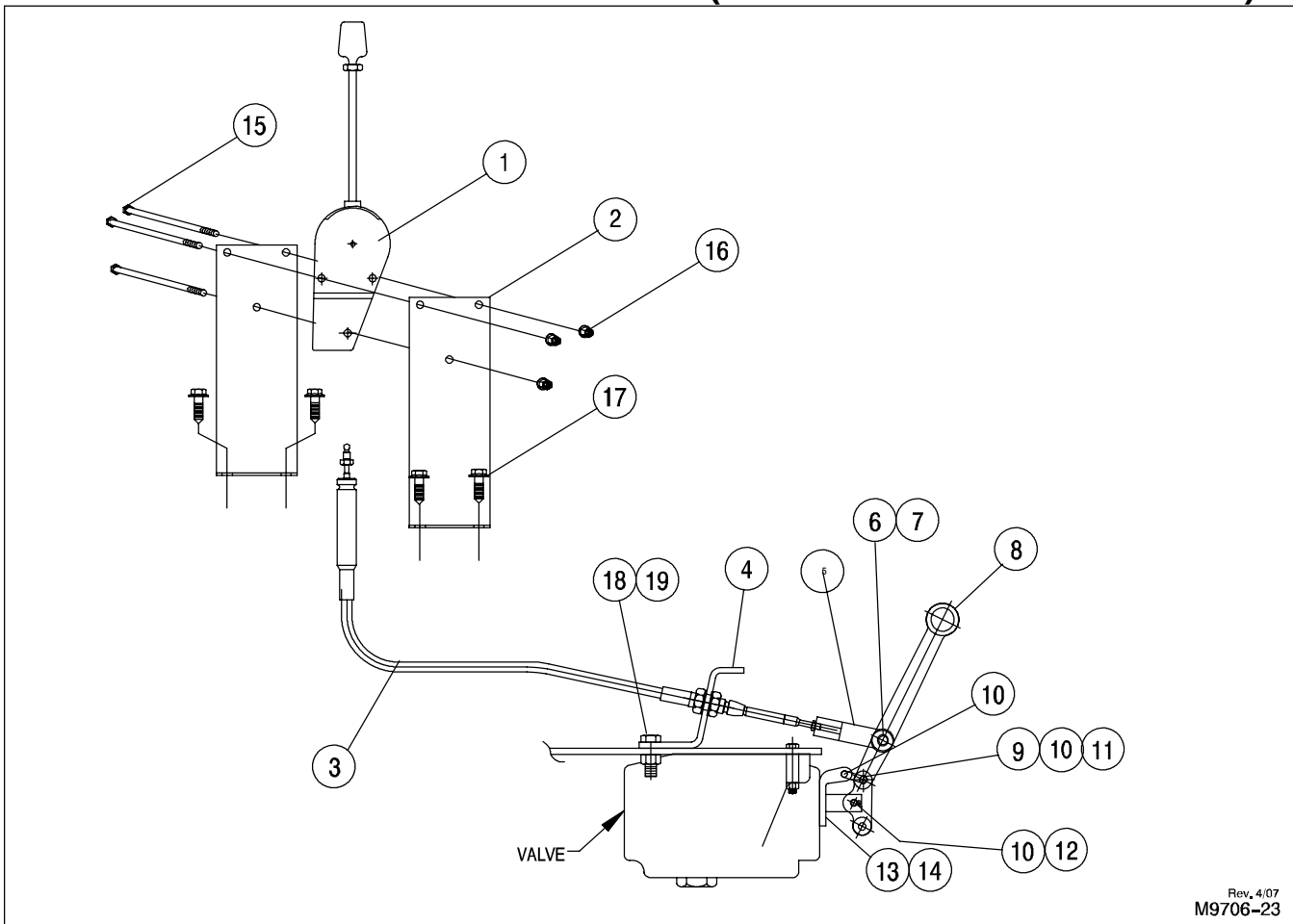
FOR MODELS - KPCC SERIAL #1001 to #2149

4/03

Important: Compare Items on pages P15 and P16 to determine which type repair parts are required.

Item	Part Number	Part Description	Qty.
	9305-50-0	2-Spool 2-Cable Valve Assembly	1
	9305-51-0	3-Spool 2-Cable Valve Assembly	1
	9305-52-0	3-Spool 3-Cable Valve Assembly	1
	9305-53-0	Valve Bonnet Kit (includes • Items)	
1	• 9305-42-3	Spool Connector	1
2	• 60-250	1/4" DIA. x 3/4" Clevis Pin	1
3	• 60-727	1/16" DIA. x 1/2" Cotter Pin	1
4	• 9305-42-2	Cable Clevis	1
5	• 63-229	1/4NF Hex Nut	2
6	• 9305-42-4	Cable Sleeve	1
7	• 9305-42-1	Cable Retainer	1
8	• 63-230	3/4NF Jam Nut	1
9	64-101	1/4" STD. Flat Washer	2
10	• 64-100	1/4" STD. Lock Washer	2
11	• 62-553	1/4NC x 2-1/2" Socket Head Cap Screw	2
12	72-115	Cable Assembly	1
13	72-107	Valve Control	1
14	25-2237	Valve - 2 Spool	1
	25-2238	Valve - 3 Spool	1

REMOTE VALVE & CONTROLS (SERIAL #2150 & HIGHER)



Rev., 4/07
M9706-23

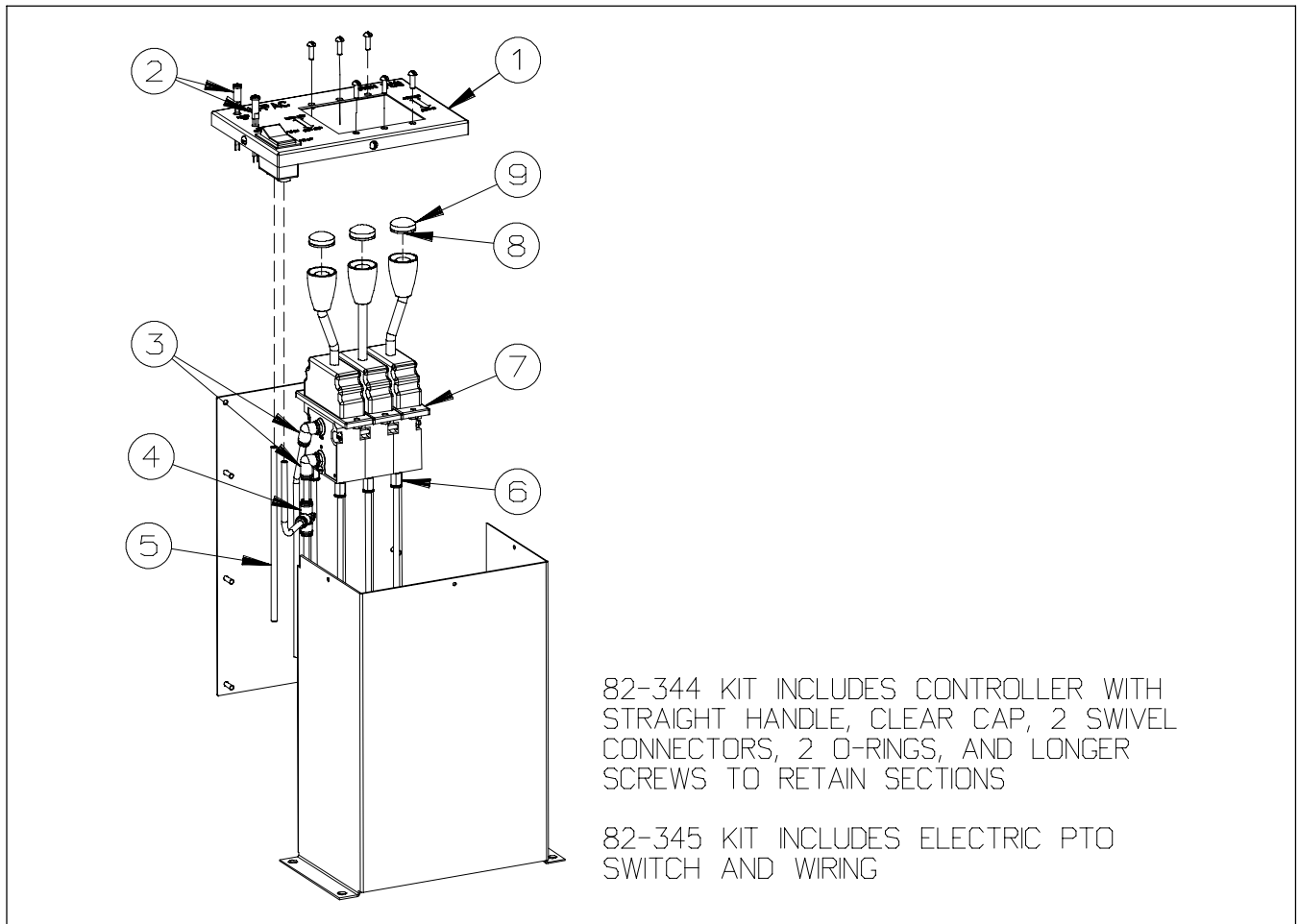
FOR MODELS - KPCC SERIAL #3000 & HIGHER

6/07

Important: Compare Items on pages P15 and P16 to determine which type repair parts are required.

Item	Part Number	Part Description	2 Spool Qty.	3 Spool Qty.
1	82-238	Controller	2	3
2	9274-0-1305	Control Mount	2	2
3	72-132	Cable - 108" Long	2	3
	72-131	Cable - 156" Long	2	3
	72-109	Cable - 252" Long	2	3
4	9610-0-17	Control Cable Bulkhead Plate	1	0
	9610-0-23	Control Cable Bulkhead Plate	0	1
KIT	72-108	Clevis Kit (Includes ● Items)	2	3
5	●	Clevis, 3/8" Hole	2	3
6	●	Valve Handle	2	3
7	●	Cotter Pin	2	3
KIT	9610-45-0	Handle Kit (Includes □ Items)	2	3
8	□ 9610-108-1	Handle	2	3
KIT	□ 25-2505	Valve Linkage Kit (Includes ★ Items)	2	3
9	★	Link	2	3
10	★	Cotter Pin	6	9
11	★	Link Plate	2	3
12	★	Pin	2	3
13	25-2199	Die Cast Bracket	2	3
14	25-2201	1/4NC x 7/8" Hex Socket Screw	4	6
15	62-106	1/4NC x 4" GD5 Cap Screw	3	0
	62-839	1/4NC x 6" GD5 Cap Screw	0	3
16	63-141	1/4NC Hex Flange Serrated Nut	3	3
17	62-115	3/8NC x 1-1/2" Hex Washer Thread Cutting Screw	3	3
18	62-420	1/2NC x 1-1/4" GD5 Cap Screw	2	2
19	63-107	1/2NC Lock Nut	2	2

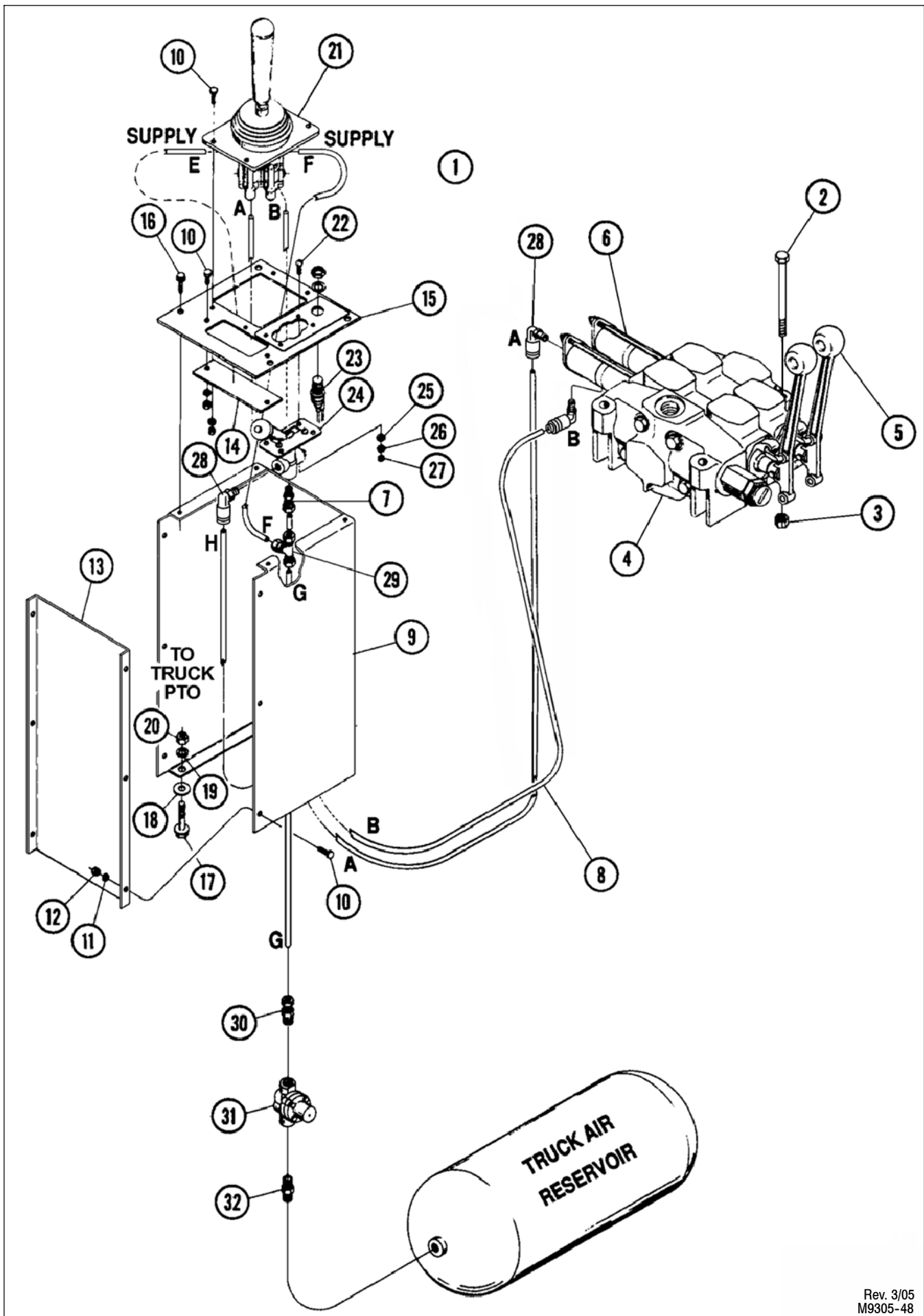
AIR CONTROLLER ASSEMBLY



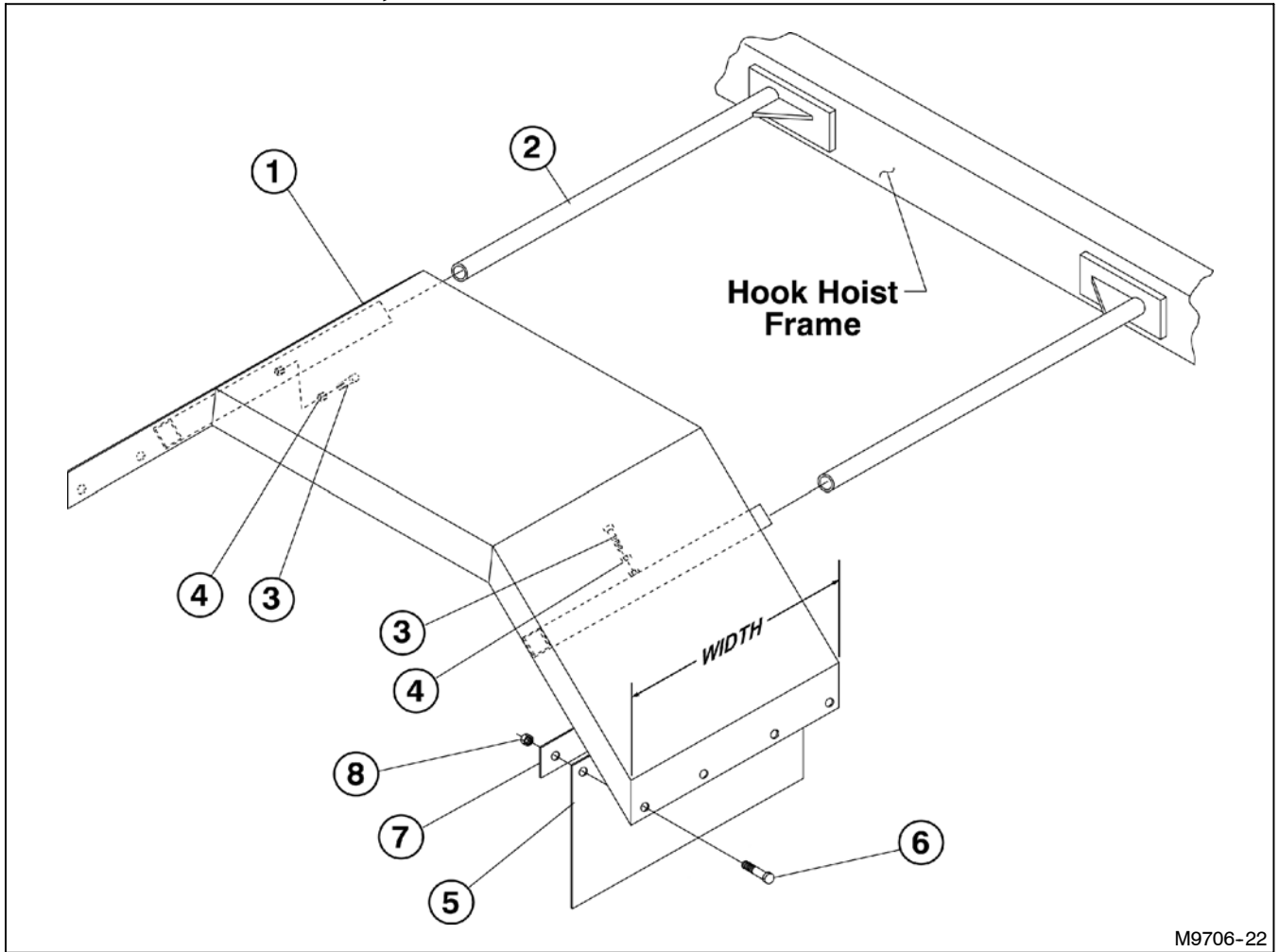
FOR MODELS - ALL

1/07

Item	Part Number	Part Description	Qty.
1	82-341	Tower Cover (Stainless Steel)	1
2	79-579	LED Lamp (Includes retaining clip)	2
3	82-313	Elbow, Swivel	2
4	82-314	Tee, Swivel	1
5	82-124	Air Line 1/4od SAE J844 Type "A"	Spec.
6	82-346	Connector, Swivel	4/6
7	82-332	Pneumatic Controller, 2-Section	1
	82-333	Pneumatic Controller, 3-Section	1
8	74-636	Decals, Controls	1
9	82-343	Clear Cap	2/3
	82-339	O-Ring (between sections)	2/4
	82-344	Conversion Kit from 2 To 3 Sections	
	82-345	Conversion Kit To Electric PTO Switch	



FENDERS, SUPPORT TUBES & MUD FLAPS



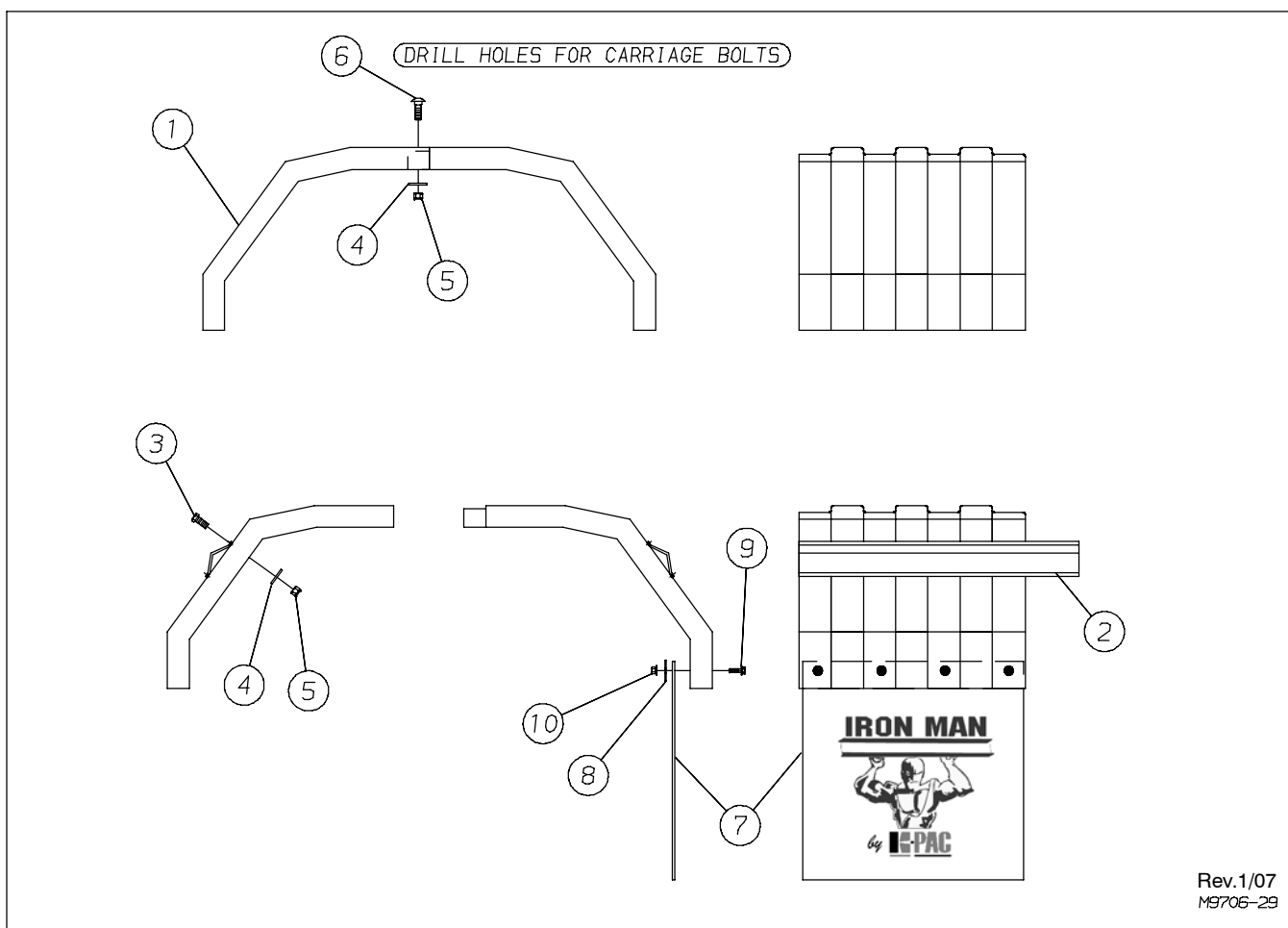
M9706-22

FOR MODELS - ALL

3/08

Item	Part Number	Part Description	Qty.
1	9305-55-0A	Standard Fender Weldment - (Width = 25-1/2")	1
	9305-57-0A	Narrow Fender Weldment - (Width = 22-1/4")	1
2	9305-56-0	Fender Support Weldment	2
3	62-503	1/2NC x 1-1/2" Set Screw	2
4	63-106	1/2NC Hex Nut	2
5	44-220	Mud Flap	1
6	62-108	3/8NC x 1" GD.5 Cap Screw	4
7	9274-0-1	Mud Flap Backing Plate	1
8	63-134	3/8NC Self Locking Nut	4

PLASTIC FENDERS

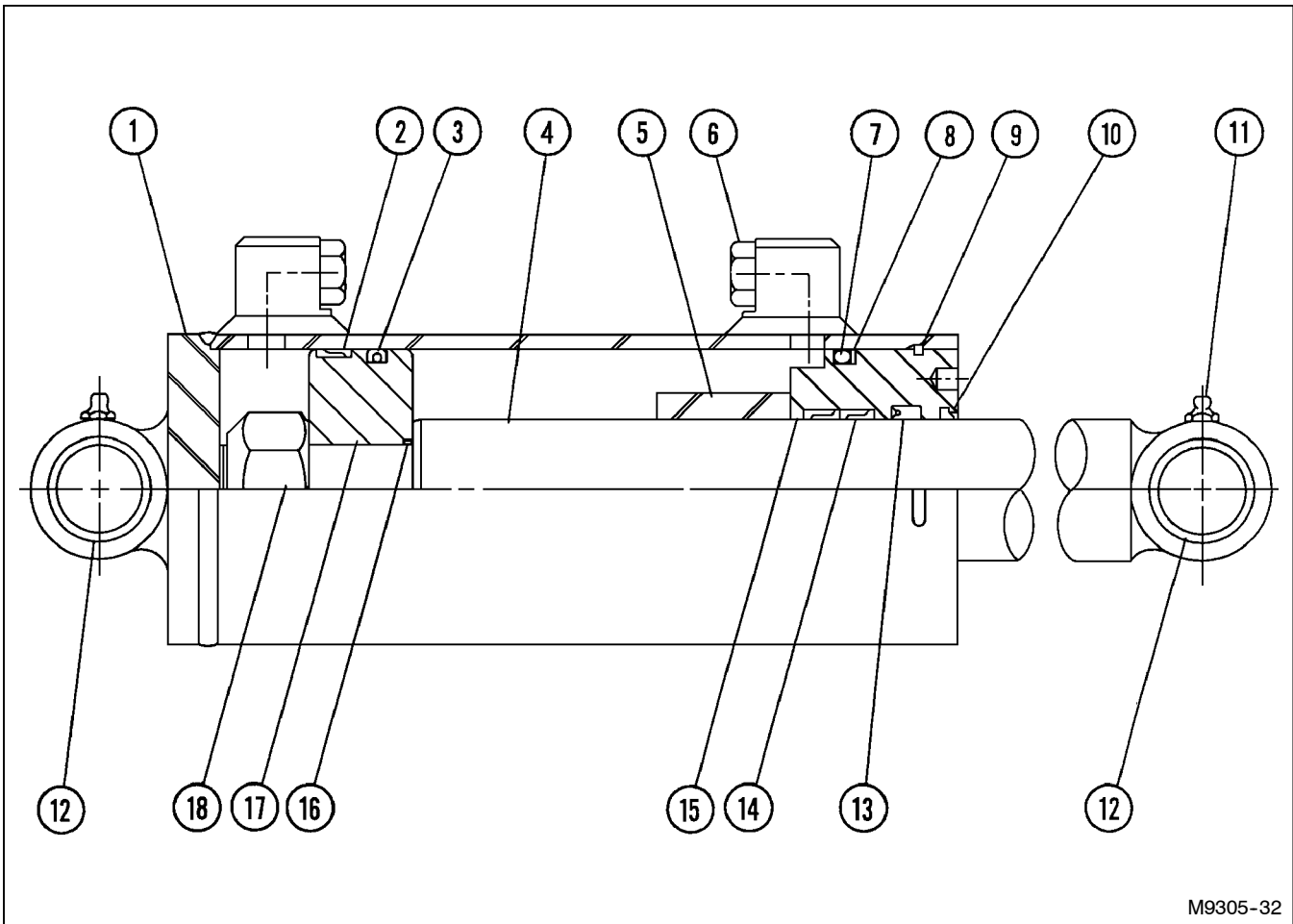


FOR MODELS - KPCC, KPCCR

2/07

Item	Part Description	Part Description	Qty
1	44-190	Set of Plastic Fenders 52"	1
	44-188	Set of Plastic Fenders 44"	1
2	82-255	Mounting Kit	1
3	★	5/16NC x 1" Hex Head Cap Screw	16
4	★	5/16" STD. Flat Washer	23
5	★	5/16NC Nylon-Top Lock Nut	23
6	★	5/16NC x 1-1/4" Carrier Bolt	7
7	44-220	Mud Flap (24" x 24")	2
8	9274-0-1	Mud Flap Backing Plate	2
9	62-367	3/8NC x 3/4" Hex Flange Serrated Bolt	8
10	63-140	3/8NC Hex Flange Serrated Nut	8
★ Items Included in 82-255 Mounting Kit			

PRINCE HYDRAULIC CYLINDER



M9305-32

21-151 4" X 32" PRINCE MAST HYDRAULIC CYLINDER ASSEMBLY

12/98

Retracted - 43-3/4"

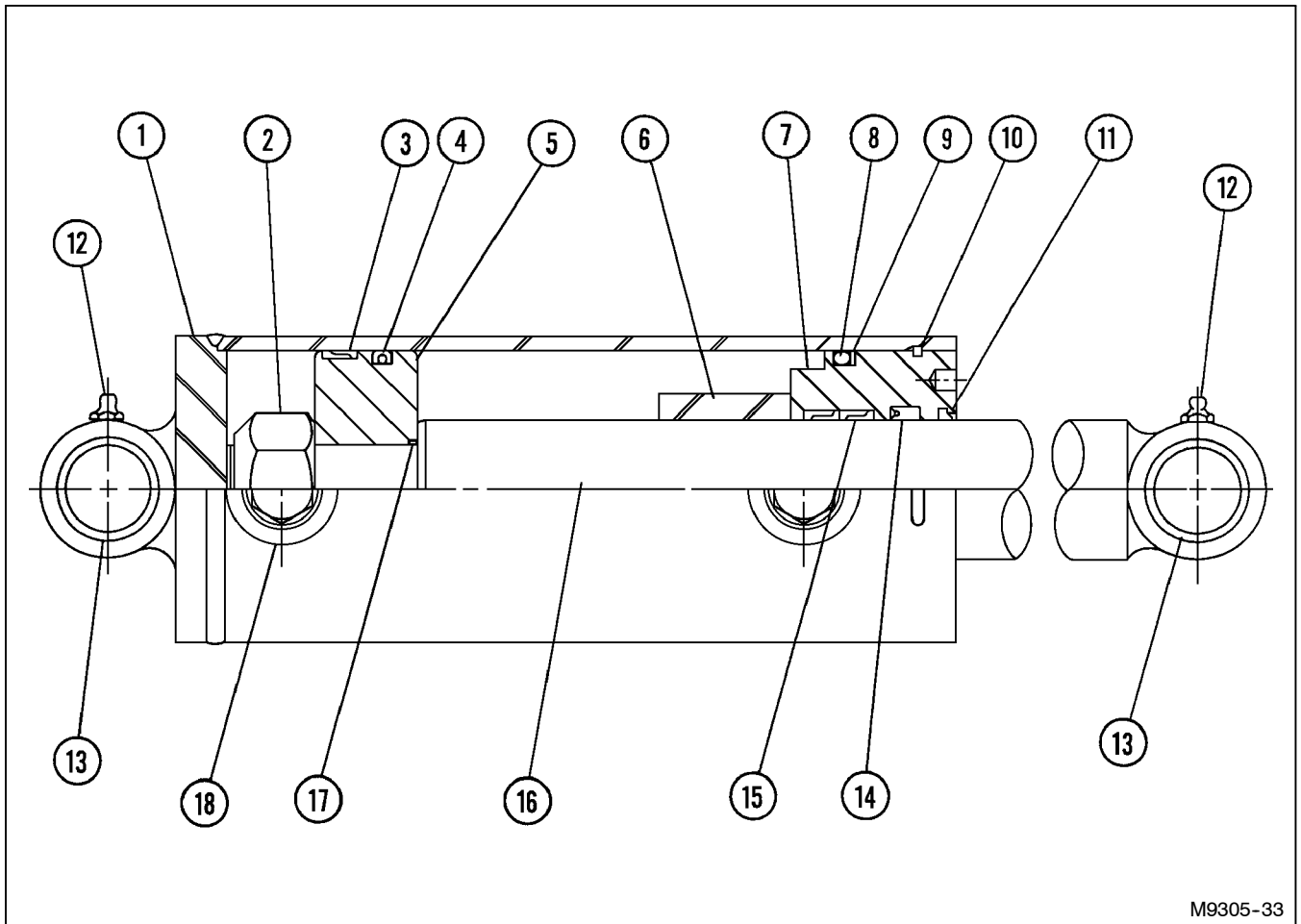
Stroke - 32"

Extended - 75-3/4"

Rod - 2"

Item	Part Number	Part Description	Qty.
	21-151	4" x 32" Hydraulic Cylinder Assembly	1
1	21-641	Butt & Tube Assembly	1
2	★	Bearing Ring	1
3	★	Crown Seal	1
4	21-642	Piston Rod	1
5	21-646	Spacer	1
6	21-404	#8 SAE Plug	2
7	★	O-Ring	1
8	★	Back-Up Washer	1
9	★	Square Retaining Wire	1
10	★	Wiper	1
11	21-534	Grease Zerk	2
12	21-645	Bushing	2
13	★	U-Cup	1
14	★	Bearing Ring	2
15	21-644	Gland	1
16	★	O-Ring	1
17	21-643	Piston	1
18	21-286	Lock Nut	1
	21-679	Seal Kit (★ Items included in Kit)	

PRINCE HYDRAULIC CYLINDER



M9305-33

21-152 4" X 29" PRINCE FORK LIFT HYDRAULIC CYLINDER ASSEMBLY

12/98

Retracted - 70-1/2"

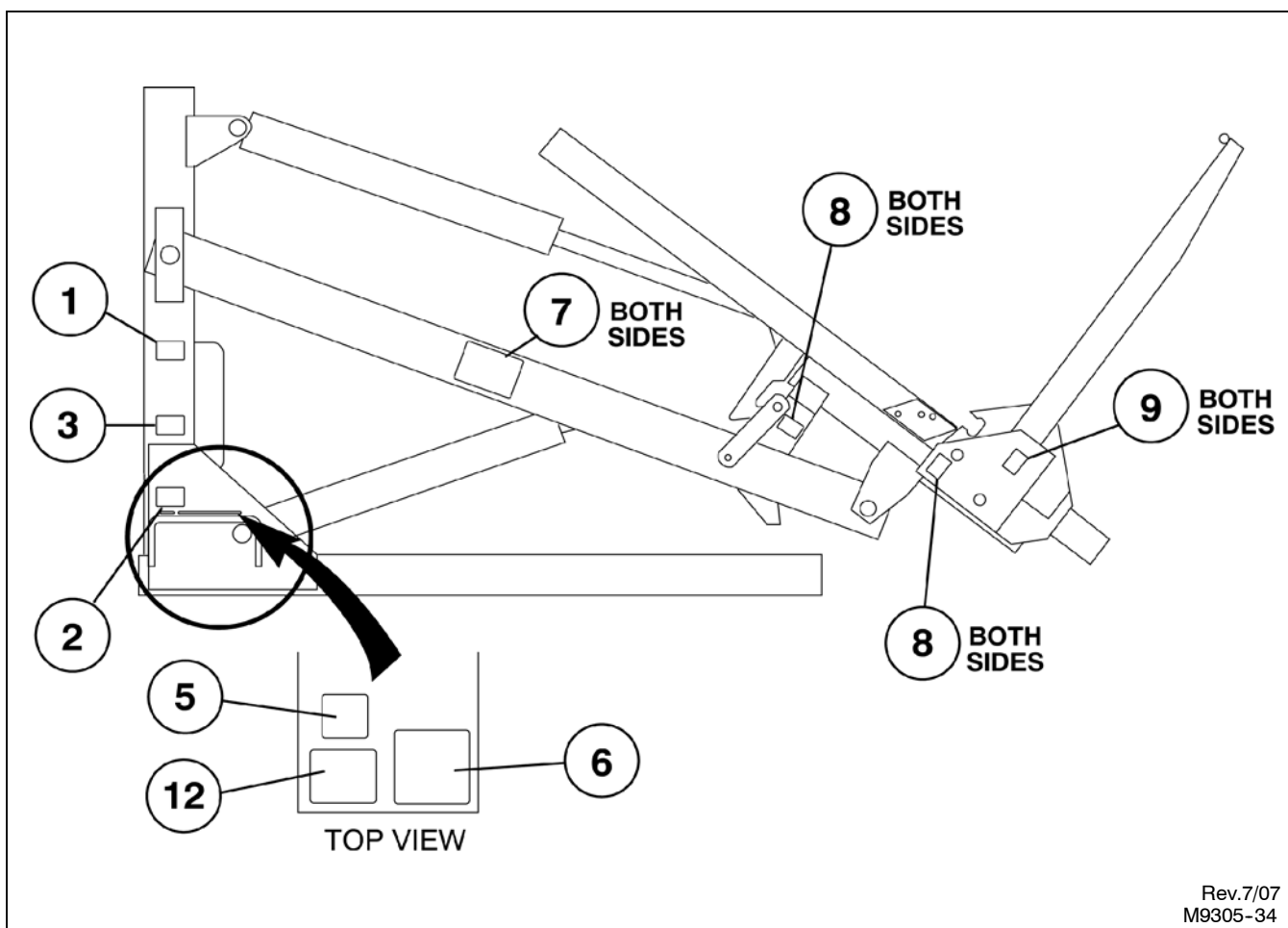
Stroke - 29"

Extended - 99-1/2"

Rod - 2"

Item	Part Number	Part Description	Qty.
	21-152	4" x 29" Hydraulic Cylinder Assembly	1
1	21-650	Butt & Tube Assembly	1
2	21-286	Lock Nut	1
3	★	Bearing Ring	1
4	★	Crown Seal	1
5	21-643	Piston	1
6	21-652	Spacer	1
7	21-644	Gland	1
8	★	O-Ring	1
9	★	Back-Up Washer	1
10	★	Square Retaining Wire	1
11	★	Wiper	1
12	21-534	Grease Zerk	2
13	21-645	Bushing	4
14	★	U-Cup	1
15	★	Bearing Ring	2
16	21-651	Piston Rod	1
17	★	O-Ring	1
18	21-404	#8 SAE Plug	2
	21-679	Seal Kit (★ Items included in Kit)	

DECALS



FOR MODELS - ALL

7/07

Item	Part Number	Part Description	Qty.
KIT	9300-50-0	Decal Kit (Includes Items below)	1
1	74-347	DANGER - Watch Electrical Lines Decal	1
2	74-276	WARNING - Hydraulic Safety Decal	1
3	74-345	CAUTION - Operating Instructions Decal	1
4	★ 74-542	K-PAC Hoist Up Decal	1
5	★● 74-328	CAUTION - Fork Carriage Decal	2
6	■ 74-373	Valve Plate	1
7	74-627	K-PAC Ironman Decal	2
8	74-348	WARNING - Pinch Point Decal	4
9	74-346	DANGER - Stand Clear Decal	2
10	★ 74-299	CAUTION - P.T.O. Speed Decal	1
11	★ 74-349	Carrier Controls Decal	1
12	★ 74-339	CAUTION - Latch Decal	2

- Used on models equipped with rotator assembly
- ★ One of each located in cab of truck
- Not Included in 9300-50-0 Decal Kit